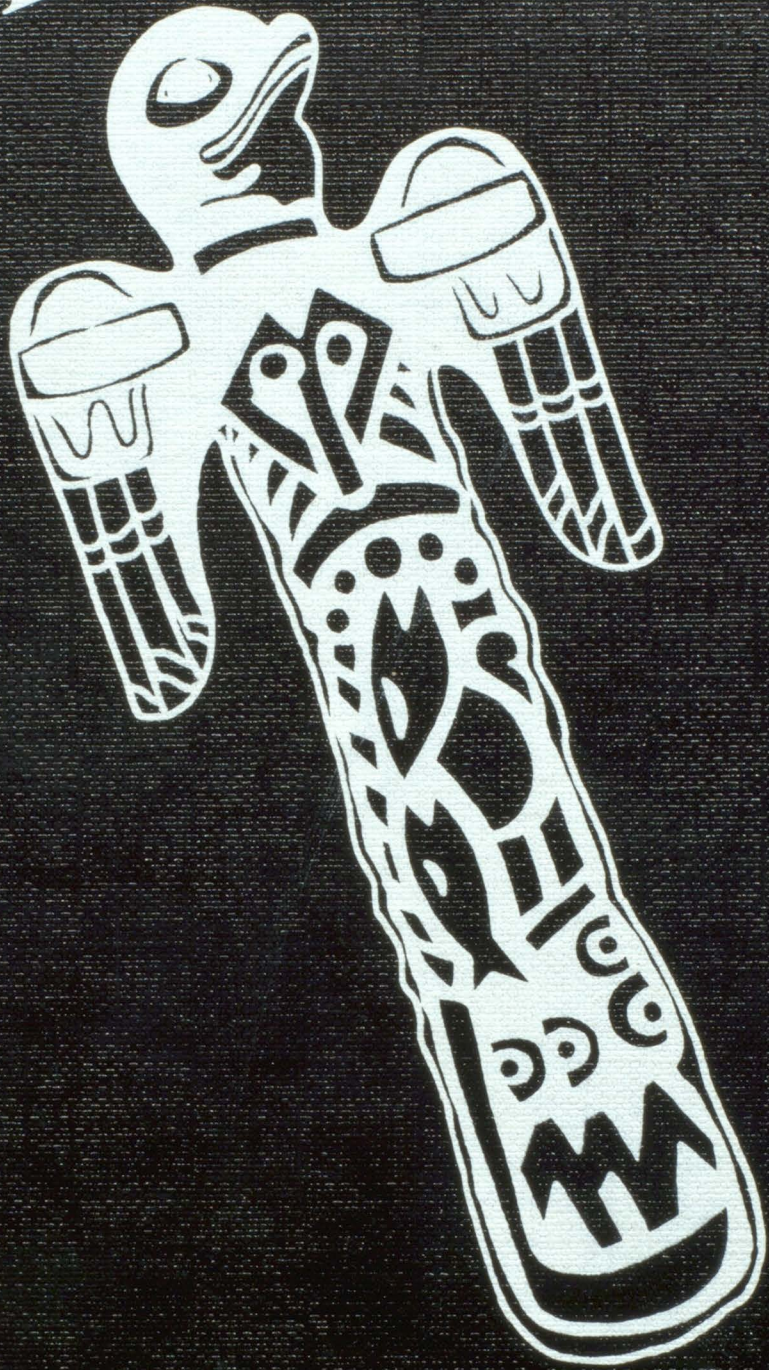
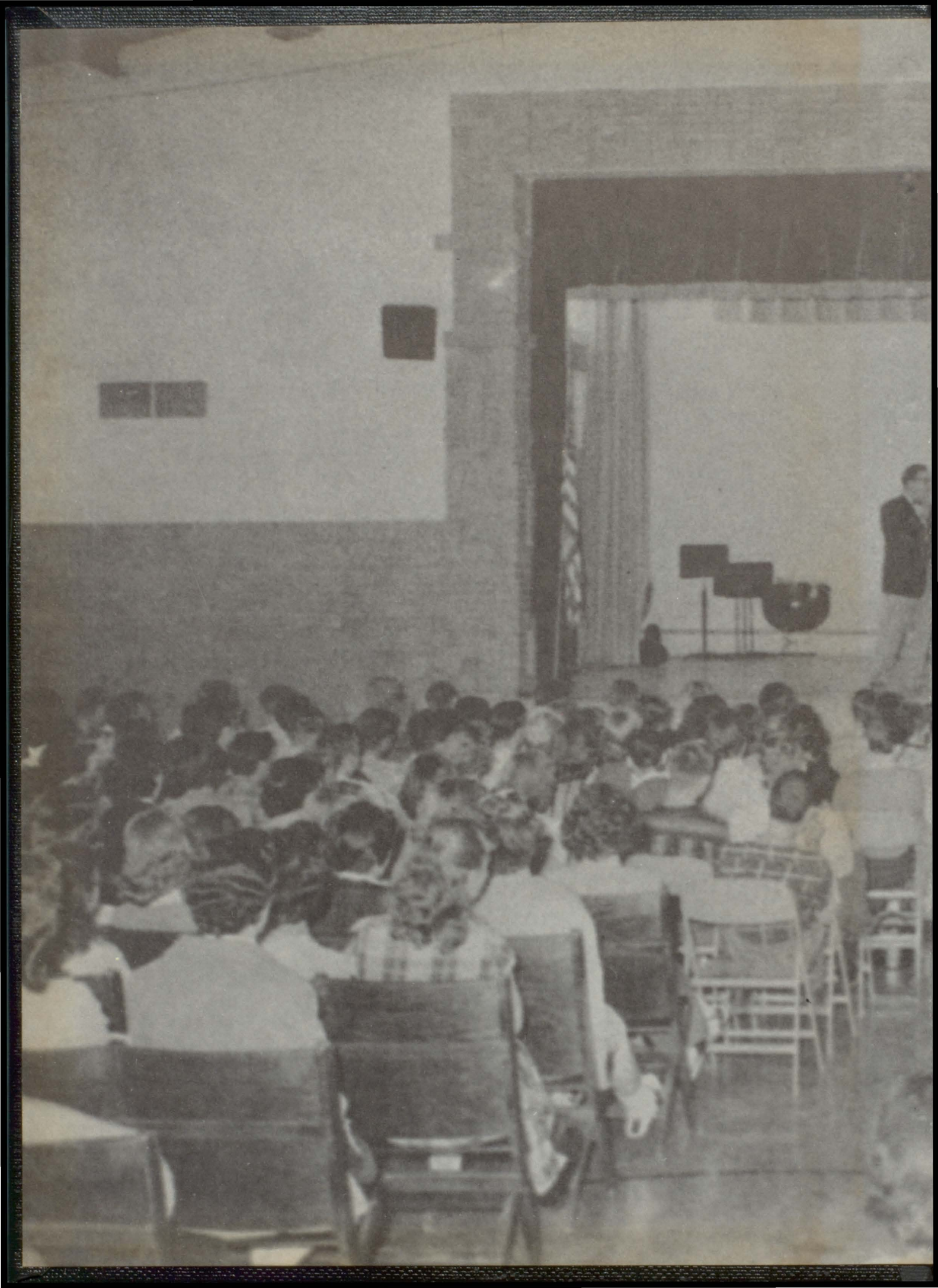
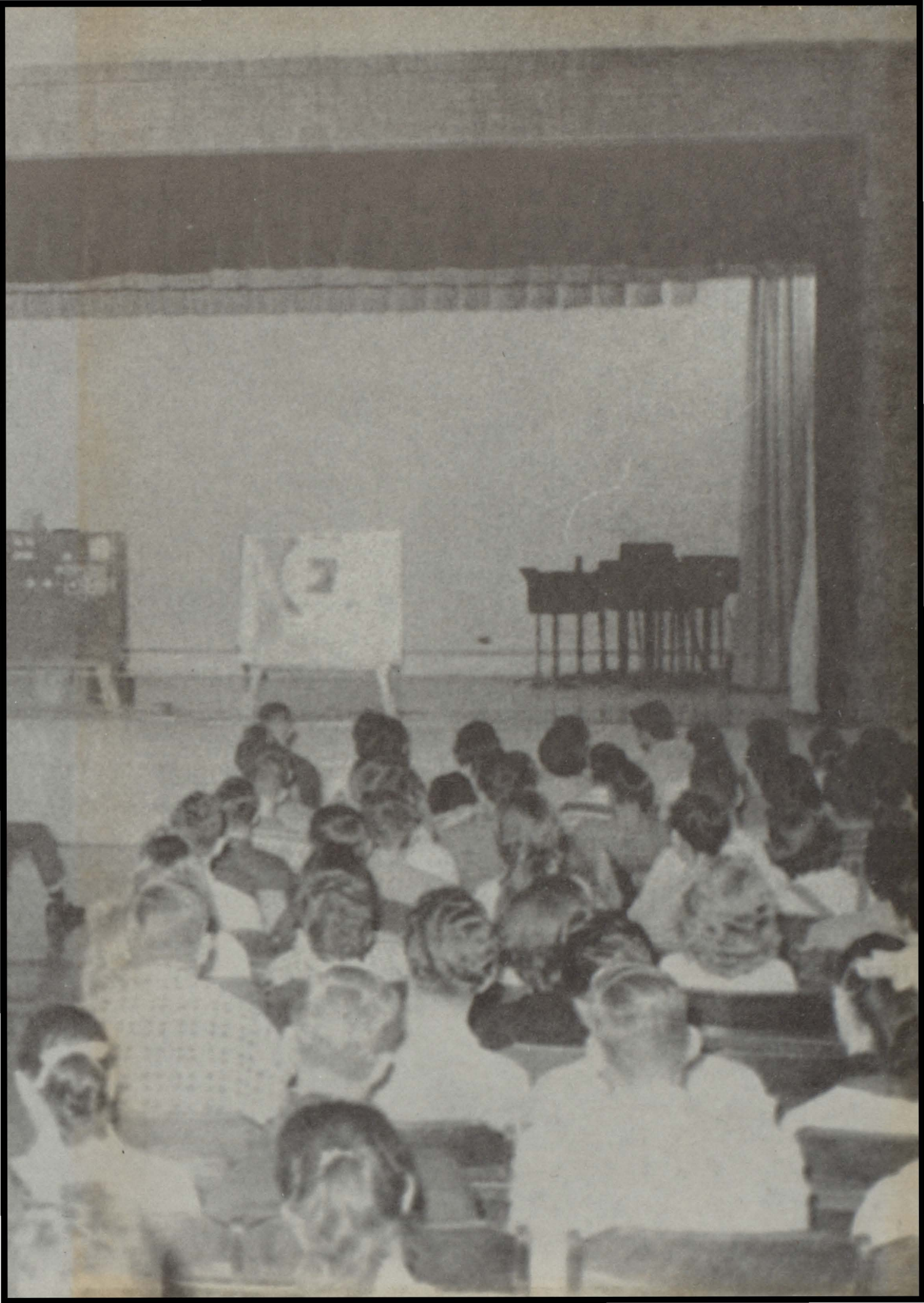


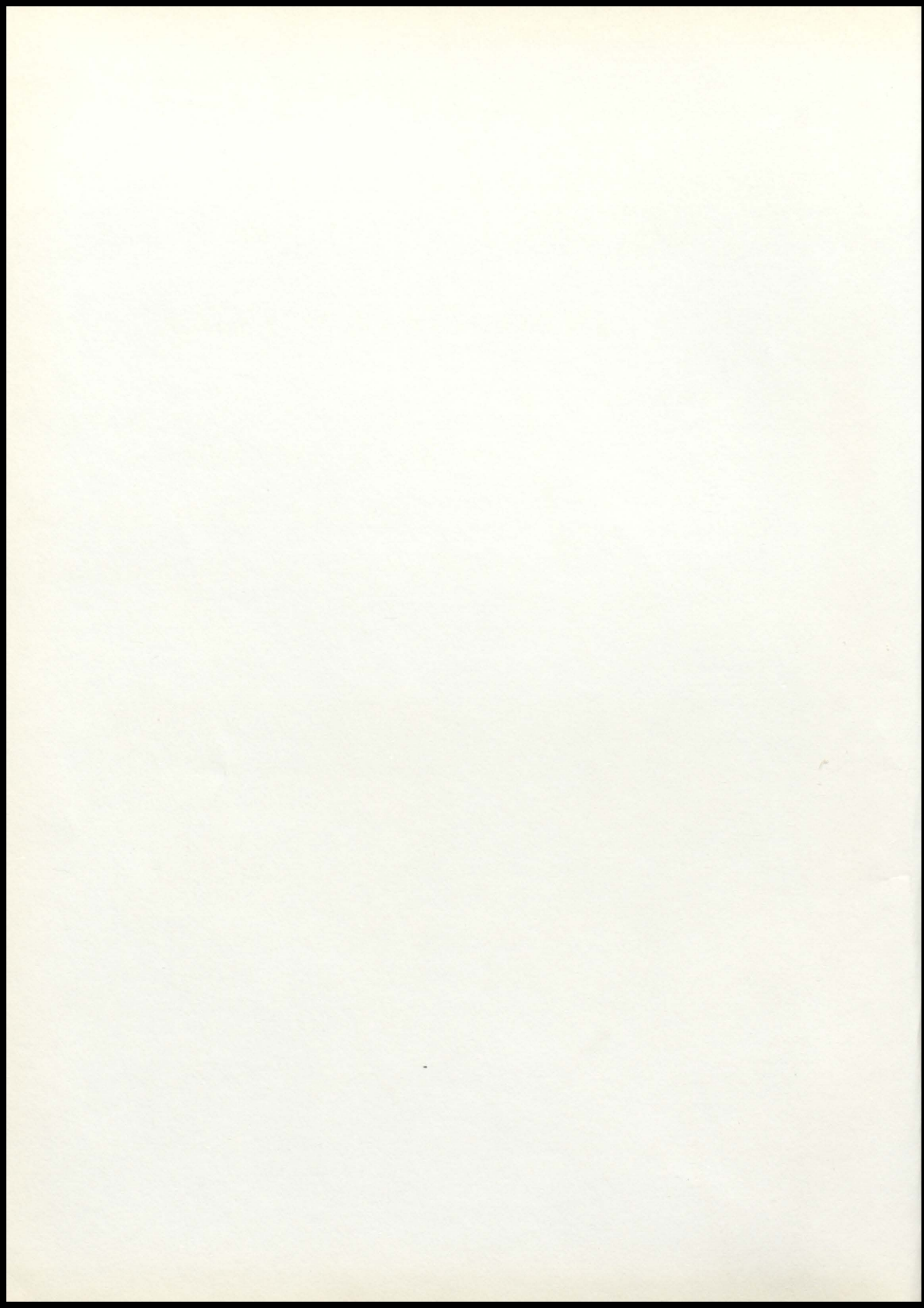
THE 1958



TOTEM POLE







Presenting the

1958 TOTEM POLE

BONNER SPRINGS RURAL HIGH SCHOOL BONNER SPRINGS, KANSAS



Kathleen Barb, Editor; Kay Roudybush, Associate Editor; Bob Boyce, Business Manager.



FEATURES STAFF



BUSINESS STAFF



CLASSES AND FACULTY



SPORTS AND ORGANIZATIONS



TYPING AND PHOTOGRAPHY



THE STAFF

EDITOR Kathleen Barb

ASSOCIATE EDITOR . . . Kay Roudybush

Business Manager Bob Boyce
Patti McLaughlin
Larry Milliken

Features Editor Richard Powell
Linda Klahr
Mary Espy

Faculty Marilyn Klamm

Classes Carol Backstrom
Jean Pilger

Sports Larry Malone
Elaine Smith

Organizations Patty Glynn
Larry Adkins

Typists Dee Padgett
Ola Anderson

Photography George Dingey

FACULTY ADVISORS

Lysle Middaugh
Robert Venturella



We, the class of 1958, dedicate this edition of the Totem Pole to Mr. James J. Whitehead, principal of our high school and president of the Kansas State Teachers' Association, with deep gratitude and appreciation for his untiring efforts in behalf of our education and the personal welfare of each member of our class.

BOARD OF EDUCATION



LAWRENCE PLATT
President



LAWRENCE ROUDYBUSH
Clerk

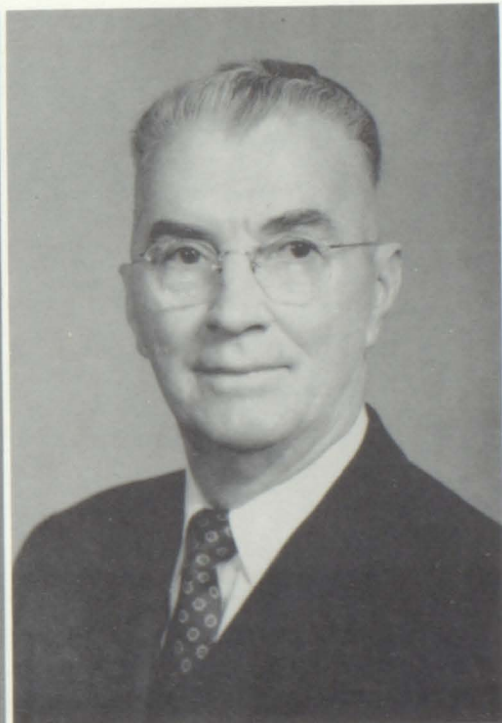


JUDGE LEROY BRADFIELD
Treasurer

OFFICE ADMINISTRATION



VERA JEAN GORSKY
Secretary



PAUL MIZE
Vice-Principal

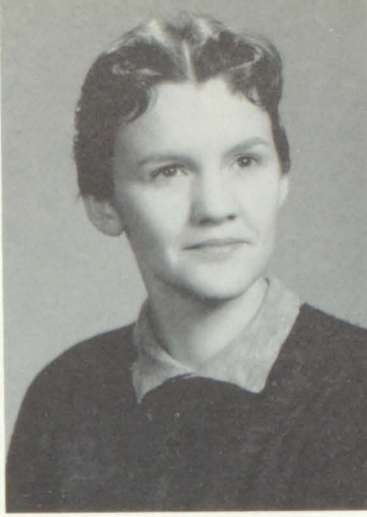


Mrs. Jennings and Mrs. Tate.

COOKS AND CUSTODIANS



Mr. (Happy) Toombs, Mr. Greenfield, Mr. Hatcher, and Mr. Almstead.



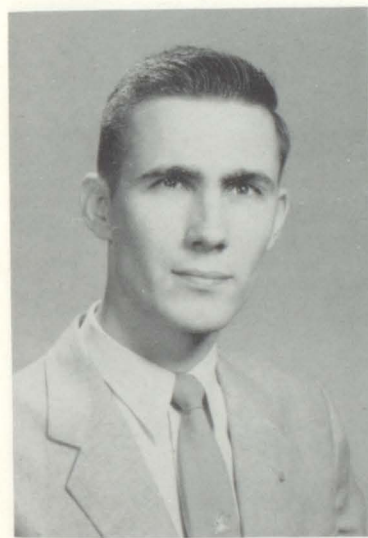
BETTY J. BARNES
 Mathematics; B. S. M. S. Kansas State Teachers College Pittsburg; Sponsor Junior Class.

INEZ BOYD
 Home Economics; B. S. Kansas State; Sponsor F. H. A., Pep Club, Junior Class.

ELAINE CARLSON
 Home Economics; B. S. University of Kansas; Sponsor F. H. A., Pep Club, Junior Class.

HUGH FERGUSON
 Music; B. S. Central Missouri State; M. S. University of Kansas; Band, Dance Orchestra, Vocal Music.

HIGH SCHOOL FACULTY



DONALD FROELICH
 Auto Mechanics; Drafting; B. A. Kansas State.

NETTIE GORTON
 English; B. A. Northeastern Teachers College, Tahlequah Oklahoma; M. A. University of Kansas; Sponsor Freshman Class.

EDWIN GORSKY
 Social Science; Coaching; A. B. College of Emporia; Sponsor Senior Class.

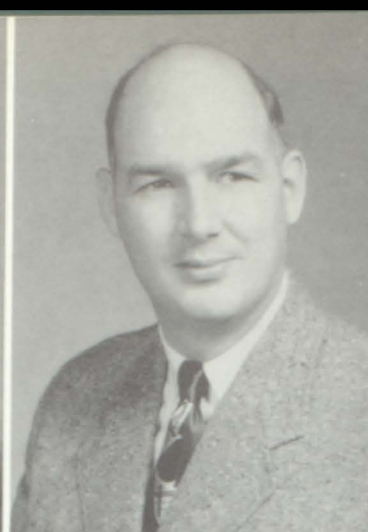
WILLIE H. HILBERT
 Drivers' Education; Citizenship; B. S., Kansas State; Sponsor Sophomore Class, Safety Club, Social Studies Club.



JACK HUNSLEY
Arts and Crafts; B. S., M.
S. Fort Hays College.



JAY JERNIGAN
English; B. A., Emporia
State Teachers College;
Sponsor Freshman Class,
Debate Club.



MEVERIL JONES
Counselor; B. S., M. A.
Washington University, St.
Louis, Missouri.



VAUGHN KIMBROUGH
English, Physical Educa-
tion, Coaching; B. A. Ot-
tawa University; Sponsor
Sophomore Class, B-Club.



IRIS LEE
Languages; A. B. College
of Emporia; M. S. Emporia
State; Sponsor Sophomore
Class, French Club, Span-
ish Club.



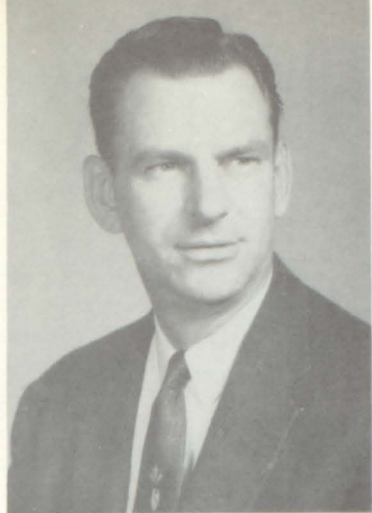
LYSLE MIDDAGH
Commerce; B. S., M. S.
University of Kansas; Spon-
sor Senior Class, Totem
Pole, Pow Wow.



GEORGE PFLAUMER
Industrial Arts; B. S. North-
west State Teachers Col-
lege, Marysville, Missouri.



BERNICE SETTLES
Librarian; A. B. Ottawa
University.



FRED SNYDER

Physical Science, Coaching; B. S., M. S. Kansas State; Superintendent of Transportation, Sponsor Student Council.



DORIS STITH

English, Latin; A. B. State Teachers College, Kearney, Nebraska; Sponsor Pow Wow, Journalism.



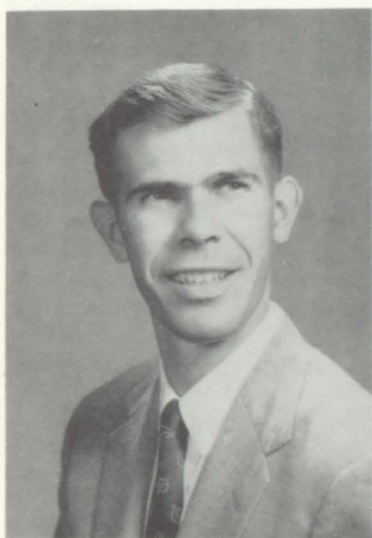
KENNETH TEWELL

Mathematics, Coaching; B. S. Kansas State Teachers College, Emporia; Sponsor Freshman Class.



PATSY THOMASON

Physical Education; B. S. Kansas State Teachers College, Pittsburg; Sponsor Bible Club, Pep Club.



MAX THOMPSON

Social Science; B. S., University of Kansas; Sponsor Junior Class.



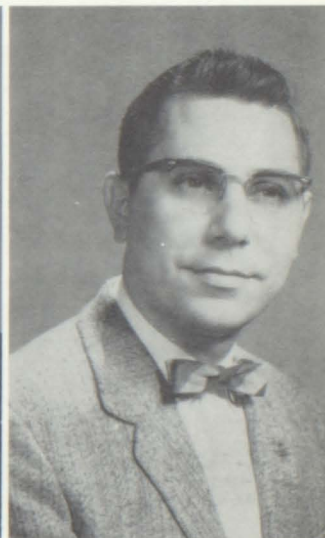
L. L. VAN PETTEN

Vocational Agriculture; B. S., M. S. Kansas State; Sponsor F. F. A.



DALE VEACH

Speech, Dramatics; B. S. Emporia State Teachers College; Sponsor Freshman Class, Thespians Junior Play, Senior Play.



ROBERT VENTURELLA

Commerce; B. S., K. S. T. C. Pittsburg; Sponsor Totem Pole, Activities Treasurer.



BILLIE JO



**PATTI
MAC**



DIANE



CAROL R.



CAROL B.



BETTY W.



SMITTY



PAT G.



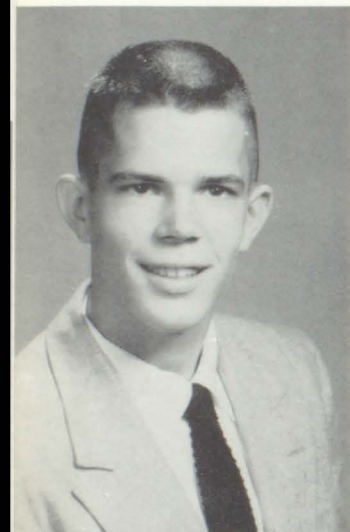
KATHY



SENIOR CLASS

CLASS OFFICERS

President, Relna Dickson
Vice-President, Gerry Saunders
Secretary, Kay Roudybush
Treasurer, Larry Milliken



WALTER ADKINS

Kansas City, Kansas 1,2; French Club 3,4; Annual Staff 4.

KATHLEEN BARB

Student Council 1; Spanish Club 2; Treasurer 2; Honor Banquet 1,2,3; Pow Wow Staff 2,3,4; News Editor 3; Journalism Conference 3; Band 2,3,4; League Music Festival 2,3,4; Sax Quartet 2,3,4; District Music Contest 2,3,4; State 2,3; Pep Band 2,3,4; Pep Club 1,2,3,4; Secretary 4; Class Secretary 3; Alternate, Girls' State 3; Junior Play; Senior Play; Thespians 4; Quill & Scroll 4; Totem Pole Editor 4; Dramatics Contest 4.



OLA ANDERSON

Pep Club 1,2,3; Spanish Club 2; Glee Club 2,3; Flag Carrier 3; FHA 3,4; Honor Banquet 3; Junior Play; Music Festival.

GARY BARNEY

Football 1,2,3,4; B-Club 3,4; FFA 1,2,3,4; Reporter 4; Student Council 2; Senior Play 4; TV Teen Town 1,2,3,4; Basketball Student Manager 1; Mixed Chorus 2,4; Thespians; Photography Club 2.

CAROL BACKSTROM

Pep Club 1,2,3,4; Annual Staff 4; Spanish Club 2,3; Vice-President 2; Debate Club 4; Junior Play; Senior Play; Thespians 4; Speech Festival 4; Exchange Play 4; Pow Wow Staff 3,4; Features Editor 3; Journalism Conference 3; Dramatics Contest 4; P. T.S.A. 3.



SHIRLEY BEACH

Class Vice-President 2; Art Club 2; Alternate Cheerleader 2; Pep Club 2,3; FHA 3,4; EKL Playday 1,2,3; Safety Club 3,4; Senior Play; Mixed Chorus 4; Thespians.

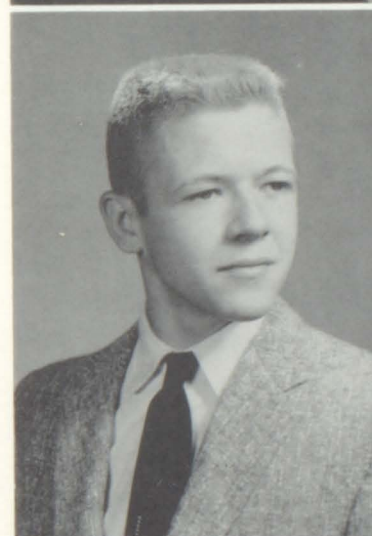


DELORES BLANCARTE

Glee Club 1; Honor Banquet 1; Music Festival 1; Latin Club 2; Pep Club 2,3; Pow Wow Production Staff 4.

ROBERT BOYCE

Honor Banquet 1,2,3,4; Junior Play; Senior Play; Track 1,2,3,4; Cross-Country 3,4; Basketball 1; Band 2,3,4; League Festival 2,3,4; District Contest 2,3,4; Pep Band 2,3,4; Debate 4; French Club 2,3,4; Treasurer 4; Boys' State 3; Annual Staff 4; Thespians 4; B-Club 3,4; National Honor Society.



RICHARD BRAUER

Football 1; Track 1; Cross-Country 1; Art Club 2, 3; Junior Play; Senior Play; Mixed Chorus 2,4; District Festival 2,4; Basketball 1,3; Hot Rod Club 3,4; President 3; Popularity Candidate 3; TV Teen Town 3,4; Safety Club 3,4; President 3; Thespians 4; President 4.

OLEVA BROGDON

Band 1,2; Music Festival 1; Pep Club 2,3; Latin Club 2,3,4; FHA 3,4; Parliamentarian 4.

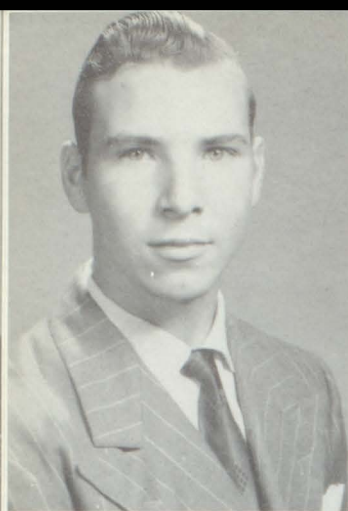
MARJORIE COINER

Pep Club 1,2,3,4; Band 2; District Festival 2; Safety Club 3; FHA 3,4; Latin Club; Junior Play; Senior Play; Thespians 4; Secretary 4.



GEORGE BROWN

Football 1,2; Basketball 1,2; Track 1,2,3.



IRVIN BRUNSON



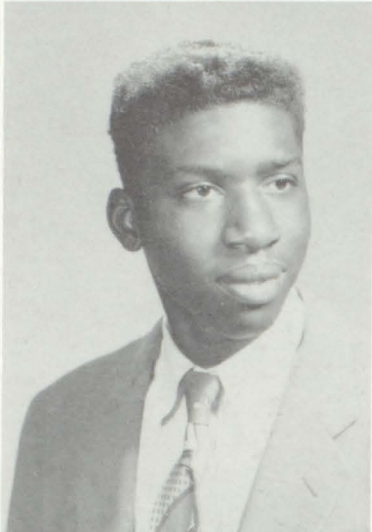
JOYCE DELANA

Glee Club 2; FHA 3,4; Thespians 4; Senior Play.



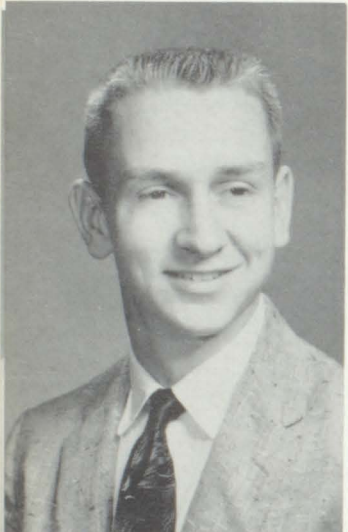
ALICE CROSBY

Mixed Chorus 1,2; Spanish Club 2; Bible Club 2,3,4; Glee Club 4.



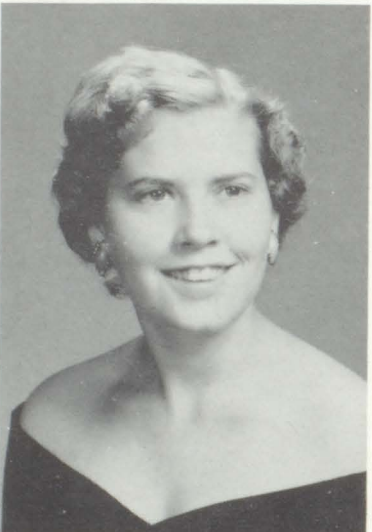
LENZIE CROSBY

Football 1; Art Club; Bible Club 1,2; Mixed Chorus 1,2; Music Festival.



RUSSELL CLARK

FFA 1.



TINA DUNKIN

Bible Club 1,2,3,4; Glee Club 3,4.



FRANCES FOSTER

Pep Club 1,2,3; Spanish Club 2,3,4; Safety Club 3; Junior Play 3.

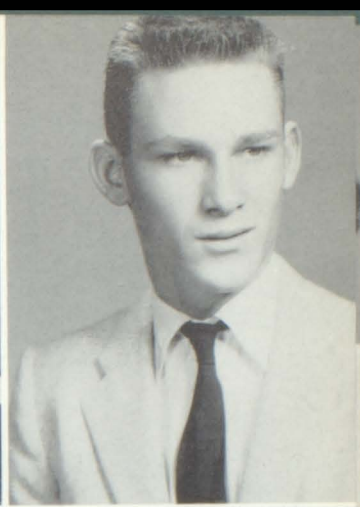


JACK CLINE

Football 1,2; Art Club 1; Basketball 1; Safety Club 3.

RELNA DICKSON

Queen Attendant 1; Class Treasurer 1,2; Bible Club 1,2,3,4; FHA 3,4; Secretary 4; Treasurer 3; Honor Banquet 1,2; Band 1,2,3,4; Music Festival 1,2,3; District Contest 1,2,3; Class President 4; Student Council 4; Junior Play; Senior Play; Thespians 4.



MICKEY DALE

Basketball 1,2,3,4; Football 1; FFA 1,2,3,4; Reporter 3; Bible Club 1,2,3,4; Mixed Chorus 2; District Festival 2.

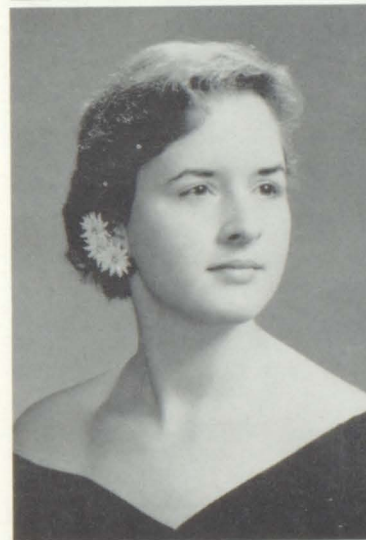


SHERMAN DEONIER

FFA 1; Track 2.

DIANE FORESTER

Pep Club 1,2,3,4; Sergeant-at-arms 4; Spanish Club 2; Band 2; Junior Play; Honor Banquet 1,2,3; Glee Club 2; District Festival 2.



PAT GLYNN

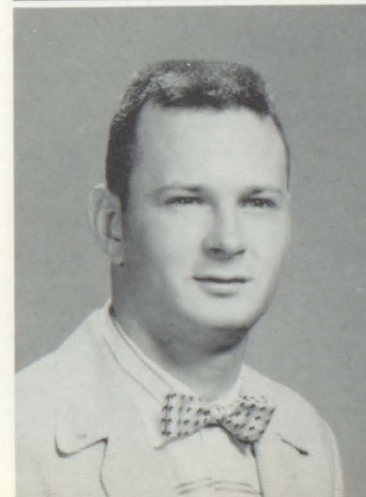
Pep Club 1,2,3,4; President 4; Student Council 2; Glee Club 2; District Festival 2; TV Teen Town 2,4; Junior Play; Senior Play; Thespians 4; Pow Wow Staff 4; Totem Pole Staff 4; Exchange Play 4; P.T.S.A. 4; Dramatics Contest 4.

GEORGE DINGEY

Basketball 1; Art Club 1,2,3; Photography Club 2,3; Junior Play; Exchange Play 2; Safety Club 3,4; President 4; Speech Festival 2; Football 1; Hot Rod Club 3,4; Vice-President 4; Thespians 4; TV Teen Town 4; Totem Pole Staff 4.

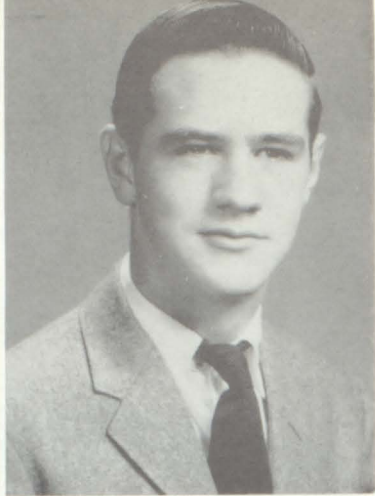
MORRIS ELLIOTT

Football 1,2,3,4; Track 1,2,3,4; B-Club 2,3,4; Treasurer 4; Photography Club 2; FFA 1,2,3,4.



SANDRA HYNDS

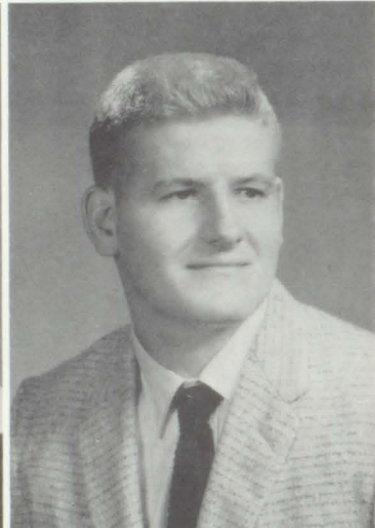
Pep Club 1; Spanish Club 3; Bible Club 3,4; Junior Play; FHA 4; Safety Club 4; P.T.S.A. 4.



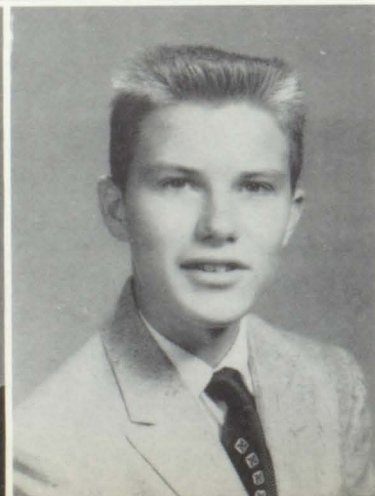
BILLIE JO HEDDEN
 Pep Club 1; Glee Club 2; Bible Club 1,2; Pow Wow Staff 4.



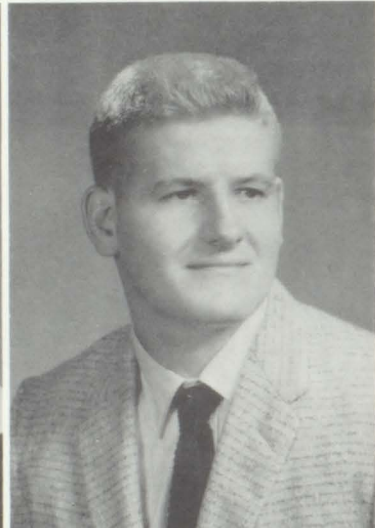
FOREST EVANS
 Art Club 1.



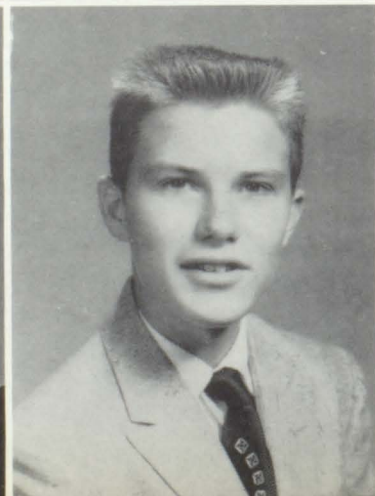
FRANK EMERY
 Band 1,2,3,4; District Festival 1,2,3,4; Mixed Chorus 4; Pep Band 4; Talent Show Award 3; Driving Rodeo 2,3; Student Council 3; Football 1,2,3,4; B-Club 3,4; Safety Club 3; Thespians 4.



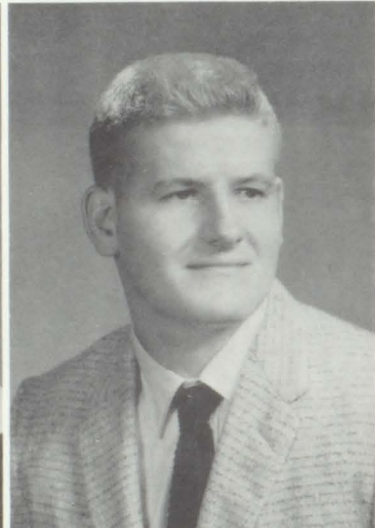
MARY ESPY
 Band 2,3,4; Pep Band 2; District Festival 2,3,4; Flute Trio 3; District Contest 3; Pep Club 1,2,3,4; Vice-President 3; EKL Playday 1,2,3; Honor Banquet 1,3; FHA 3,4; Junior Play; Senior Play; Thespians; Pow Wow Staff 4; Totem Pole Staff 4.



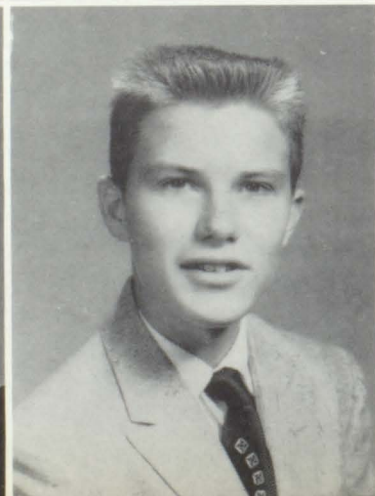
MURIEL HOFFINE
 Pep Club 1,2,3,4; Bible Club 1,2,3; Honor Banquet 1,2,3; FHA 3,4; Secretary 3; Treasurer 4; Glee Club 1,3,4; District Contest 1,3; District Festival 3; Junior Play; Senior Play; Safety Club 4.



ROGER GROH
 Football 1,2,3,4; Track 1; Basketball 1; B-Club 2,3,4; Art Club 2; Safety Club 3; Hot Rod Club 2,3,4; Thespians 4.



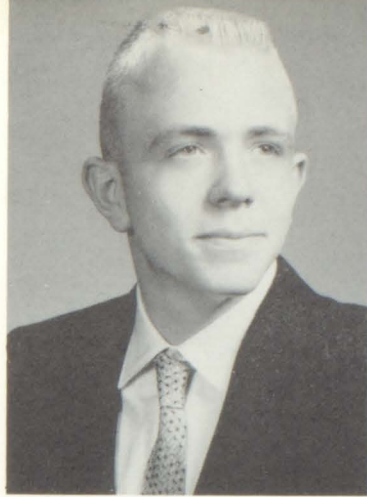
JUDY HYMER
 Pep Club 1,2,3,4; Sergeant-at-arms 3; Honor Banquet 1,2,3; Glee Club 2; District Festival 2; Flag Twirler 3; Art Club 2,3; TV Teen Town 3; French Club 4.



JIM HEMPHILL

ROYCE KAHLE

Basketball 1; Football 1,2; FFA 1,2,3,4; Sentry 3; Vice-President 4; Photography Club 2; Art Club 3; Mixed Chorus 1,4; Junior Play; Senior Play; Hot Rod Club 3,4; Safety Club 3,4; Thespians 4.



MARILYN KLAMM

Band 1; Majorette 1; District Festival 1; Art Club 2; Junior Play 3; FHA 3,4; Historian 4; Glee Club 4; Pep Club 1,2,3,4; EKL Play Day 3; Totem Pole Staff 4.

CLYDE HERRIN

Band 1,2,3,4; Pep Band 1,2,3; Honor Banquet 1,3; Senior Play; Thespians 4; Boys' State Alternate 3; National Honor Society.



LINDA KLAHR

Pep Club 1,2,3,4; Latin Club 2,3,4; Band 1,2,3,4; Pep Band 1,2,3,4; District Festival 1,2,3,4; Dance Band 2,3,4; Sax Quartet 2,3,4; District Contest 1,2,3,4; State 2,3; Honor Banquet 1,2,3; Totem Pole Staff 4; Pow Wow Staff 4; Student Council 4; Secretary 4; FHA 4; Senior Play Student Director; Thespians 4.

CAROLYN MILLER

Piper High School 1,2; Bible Club 3,4; Art Club 3.



SHIRLEY LINDEN

Honor Banquet 1,2,3; Glee Club 1,2,3,4; District Contest 2,3; State 2,3; District Festival 2,3,4; Flag Carrier 3; Bible Club 1,2,3,4; Librarian 3.

DEANNA PADGETT

Pep Club 1,2,3,4; Cheerleader 2,3,4; Honor Banquet 1,3; Glee Club 1,3; District Contest 3; State 3; Class Secretary 1; French Club 2,3,4; Secretary 3; EKL Play Day 1,2,3; Totem Pole Staff 4; Popularity Candidate 2; Snow Ball Queen 3; Band 2,3; Senior Play; Thespians; TV Teen Town 1,3,4; Homecoming Queen 4.



DONALD POGUE

Band 1,2,3,4; District Festival 1,3,4; District Contest 2; Honor Banquet 3; TV Teen Town 3; Latin Club 2; French Club 3,4; President 4.

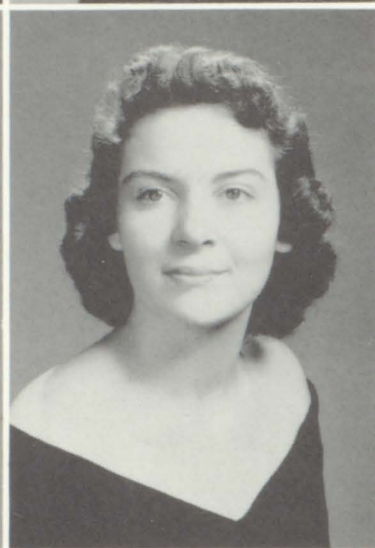


PATTI MC LAUGHLIN

Band 2,3,4; Pep Band 3,4; Mixed Chorus 2,3; Glee Club 4; District Festival 1,2,3,4; District Contest 2,3; State Contest 3; Honor Banquet 1,2,3; Pep Club 3,4; FHA 3,4; President 3,4; Senior Play; Thespians; Totem Pole Staff 4.

LARRY MILLIKEN

Fairport Central High 1; Football 2; Basketball 2, 3,4; Track 2,3,4; Cross Country 3,4; B-Club 2,3,4; Vice-President 4; Spanish Club 2; TV Teen Town 2,4; Class Treasurer 4; Totem Pole Staff 4.



LARRY MALONE

Football 1,2,3,4; All League Football Team 4; All Area Team 4; B-Club 2,3,4; President 4; Homecoming King 4; Art Club 2; Safety Club 3; Photography Club 2; Hot Rod Club 2,3,4; TV Teen Town 4; Senior Play; Thespians 4; Totem Pole Staff 4.

MARTHA MEINKE

Glee Club 1,3,4; District Contest 1,3; District Festival 3; Bible Club 1,2,3,4; Art Club 2; Latin Club 3; Honor Banquet 1,3; Junior Play; Thespians 4.

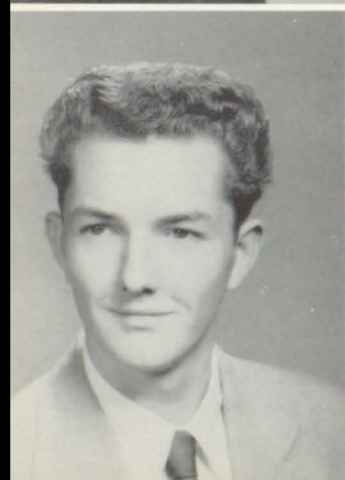


CATHERINE NEAL

Bible Club 1; Spanish Club 2,3.

WILLIAM MC DONALD

Track 1; Football 1,2,3,4; Basketball 1,2,3,4; B-Club 2,3,4.



JIM MILNER

Art Club 1,2; Safety Club 3,4; Vice-President 4; Mixed Chorus 1; Pow Wow Production Staff 4; Junior Play; Thespians 4.

MARTHA POLLOCK

Pep Club 1,2,3; Spanish Club 2; Glee Club 2,3; District Festival 2,3; Flag Carrier 2; Honor Banquet 3; Junior Play.

ALICE MC CLEARY

Bible Club.

RICHARD POWELL

Band 1,2,3,4; Pep Band 1,2,3,4; League Music Festival 1,2,3,4; District Contest 4; Basketball 1; Honor Banquet 2,3; Latin Club 2,3,4; Pow Wow Staff 2,4; Class Treasurer 3; Student Council Treasurer 4; Boys' State 3; TV Teen Town 3; Junior Play; Senior Play; Thespians 4; Treasurer 4; Student Council Conference 4; P.T.S.A. 4; Quill and Scroll 4; Totem Pole Staff 4.

JOHN SWENTON

Latin Club 1,2,3,4; Safety Club 3,4; Class President 3; Student Council Vice-President 3; President 4; Third Vice-President P.T.S.A. 4; Boys' State 3; Honor Banquet 1,2,3,4; Junior Play; Stage-manager; Governor's Safety Council 4; TV Teen Town 3,4; Student Council Conference 3,4.

JUDY REYNOLDS

Glee Club 1,2,3,4; Mixed Chorus 2; District Festival 1,2; Band 1,2; TV Teen Town 1,2,3,4; Class Secretary 2; Cheerleader 2; Alternate 3; Junior Play; Pep Club 1,2,3,4; Honor Banquet 1,3; Pow Wow Production Staff 4.

CAROL RUBY

Band 1,2,3,4; Clarinet Quartet 1,2,3,4; District Contest 1,2,3,4; State 1,3; District Festival 1,2,3,4; Dance Band 1,2,3,4; Queen Candidate 3; Student Council 3; Girls' State 3; Honor Banquet 1,3; Student Council 3; Junior Play 3; Pep Band 1,2,3,4; TV Teen Town 3; French Club 3,4; Vice-President 3; Latin Club 1,2,3,4; Glee Club 4.

TED SMITH

FFA 1,2,3,4; Vice-President 3; President 4; Class Vice-President 1; President 2; Boys' State 3.

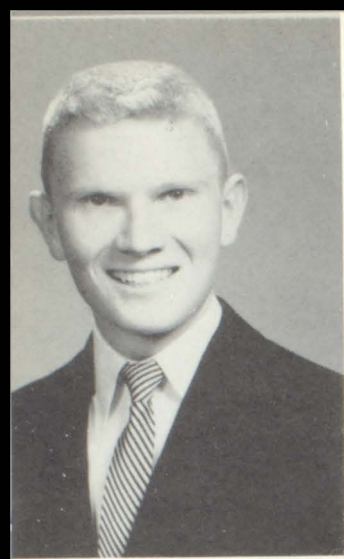
RONNIE SEATON

Parkville High 1,2; Bible Club; Art Club; Spanish Club.

ELAINE SMITH

Band 2,3,4; Majorette 3,4; District Festival 1,2,3,4; Mixed Chorus 1,4; Glee Club 2; Pep Club 1,2,3,4; Popularity Candidate 3; Latin Club 2; FHA 3,4; Reporter 4; Junior Play; Senior Play; Thespians 4; TV Teen Town 3,4; Queen Candidate 4; Totem Pole Staff 4.





GERRY SAUNDERS

Pow Wow Staff 3,4; Sports Editor 3; Editor 4; Band 1, 2, 3, 4; District Festival 1, 2, 3, 4; District Contest 2,3,4; State 2; Pep Band 1,2; Dance Band 2, 3,4; Honor Banquet 1,2,3; Safety Club 4; Latin Club 1,2,3,4; TV Teen Town 3,4; Class Vice-President 3; Photography Club 2; French Club 3,4; President 3; Debate 4; Basketball 1; Boys' State Alternate 3; Trumpet Trio 2; PTSA 4; Junior Play; Thespians; Class Vice-President 4; Debate Club 4; Quill & Scroll 4; Journalism Conference 3; KC Star Correspondent 3,4; Topeka Daily Capitol Correspondent 4.

BONNIE SPROUT

Hastings, Nebraska 1,2; Stockton, Kansas 3; Senior Play; Thespians 4; Pow Wow Production Staff 4.

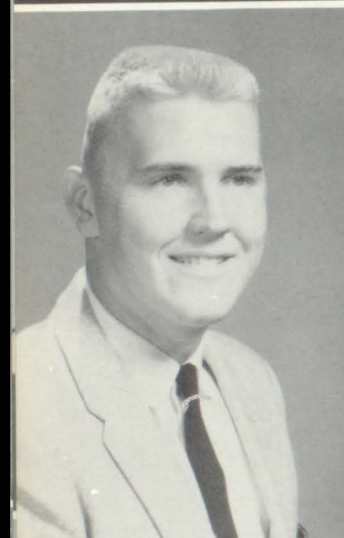


JEAN PILGER

Glee Club 1; Bible Club 1; Honor Banquet 1,2; Pep Club 3; District Music Contest 1; Debate Club 4; Pow Wow Staff 4; Totem Pole Staff 4.

HURSHEL SURRITTE

FFA 1.

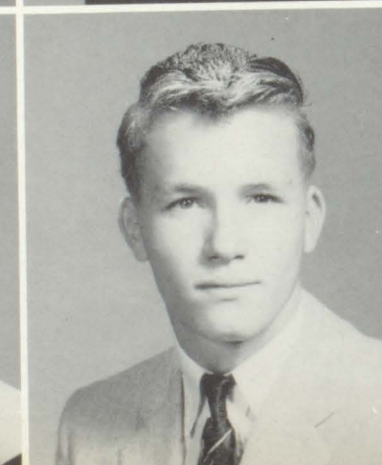


ELLIS SOWERS

Football 1,2,3; Basketball 1,2,3,4; Track 1,2,3,4; Band 1,2,3; District Festival 1,2,3; Regional Track Meet 2,3,4; KU Relays 2,3,4; B-Club 2,3,4; State Track Meet 2,3,4; Junior Play; Senior Play; Thespians 4.

JUDY SHANAFELT

Pep Club 1,2,3,4; Band 1,2,3,4; Majorette 1,2,3,4; District Festival 1,2,3,4; Glee Club 2,3,4; Mixed Chorus 4; TV Teen Town 3; FHA 3,4; Junior Play Thespians; Honor Banquet 3; District Music Contest 3,4.



KAY ROUDYBUSH

Glee Club 1,2,3,4; Mixed Chorus 3; District Festival 1,2,3,4; District Contest 1,3,4; Girls' Quartet 3; State Contest 2,3; Band 1; Pep Band 1; Dance Band 3,4; TV Teen Town 1,2,3,4; Football Queen Attendant 2; Basketball Attendant 2; Popularity Candidate 1; Junior Play; Senior Play; Thespians; Exchange Play 2,3; Pep Club 1,2,3,4; French Club 2,3,4; Secretary 2; Pow Wow Staff 3,4; Class Secretary 4; Totem Pole Associate Editor 4; Honor Banquet 2,3; FHA 4.

SPURGEON WALL, JR.

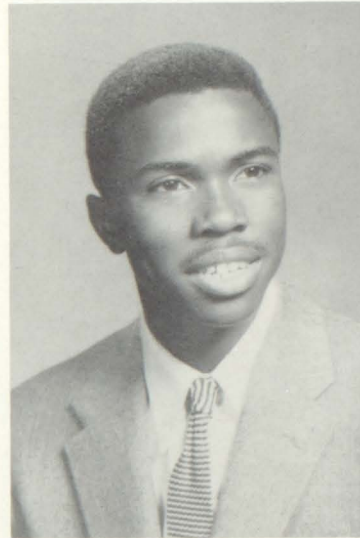
GAYLE SCHRADER

Glee Club 1,2; Pep Club 1; Mixed Chorus 3; Bible Club 1,2,3,4.



SAMUEL ROSENTHAL

Basketball 1,2,3,4; Track 1; Spanish Club 2; Latin Club 3.



ALICE WILSON

Bible Club 1, 2, 3, 4; Quiz Team 2, 4; Glee Club 2; Art Club 3; Junior Play.

JOHN WHITE

Student Council 1; Basketball 1,2; Football 1,3; Track 1,3; French Club 2,3; Safety Club 3; TV Teen Town 1; Art Club 1; Junior Play; Hot Rod Club 3,4.



BETTY WILSON

Bible Club 1,2,3,4; Vice-President 3; Quiz Team 2,3; Spanish Club 2,3; Secretary 3; Glee Club 2; District Festival 2.

ANNA WILSON

Bible Club 1, 2, 3, 4, Secretary-Treasurer 4; Quiz Team 2, 4; Honor Banquet 1; Glee Club 1, 2; District Festival 2; FHA 3; Junior Play.



Not Pictured
RICHARD GOODSEAL



ELLIS



DICKY



DON



FRANK



GEORGE



ROG

**J
O
H
N**



JIM



DICK



TED



GER



BOB



UNDERCLASSMEN

JUNIORS

President - Bob Frey

Vice-President - Gary Slick

Secretary - Martie Kuhn

Treasurer - Shirley Bush



Horace Askew
Alan Boyd

Lennis Adair
Donna Brauer

Jasper Balance
Ava Nell Brogdon

Patty Beach
Phyllis Brunson

Marcia Beard
Carol Sue Bundy





Shirley Bush
 Barbara Byers
 Connie Clapper
 Linda Chandley



Beverly Chance
 Barbara Dangerfield
 Jack DeMotte
 Carol Deonier



Mitzi Dunn
 Clydeen Edmonds
 Helen Everman
 Harlan Fanning



Larry Forbach
 Alva Freeman
 Bob Frey
 Lenna Garr



Gerry Garstecki
 Beverly Gibbons
 Bernice Gilbert
 Gerry Glynn



Larry Goble
 Stanley Goble
 Alma Harrell
 Mary Ann Hartegan

Mary Hauetter
Linda Hemphill
Shirley Holloway
Roberta Huseby



Don Johnson
Gaylord Jones
Lanny Jones
Linda Krueger



Martha Kuhn
Pat Langford
Clanton Laverack
Betty Lawrence



Gene Leighty
Joyce Leonard
Betsy Metzler
Kathleen Mikesich



Vivian Neal
Grady Newton
Luella Newton
Larry Oliver

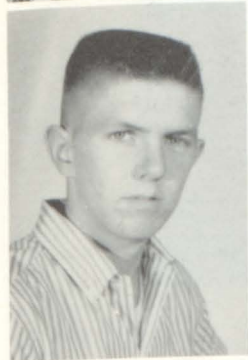


Diane Orser
Donald Pendleton
Lee Penny
Karen Pinney





Larry Platt
 Laura Purtee
 Donna Renner
 Jim Reynolds



Ray Reynolds
 Mike Reynolds
 Segest Mitchell
 Carolyn Roberts



Ed Roberts
 Stuart Seibel
 Ronnie Shirey
 Virginia Shaw



Ronnie Shultz
 Gary Slick
 Charles Spring
 Sherwood Sprout



Pat Stalfus
 Louise Trobaugh
 Gary Vaughn
 Joan Vaughn



Eugene Wagner
 George Wendt
 John White
 Cristella Williams



Julie Wilkerson, Karl Wolf, Sharon Worley, Judy Young, Sharon Zimmerman, Eugene Lynn,
DeLores McDonald, Midge Martin.

NOT PICTURED

Loretta Conway
Ernest Harris
Evelyn Mitchell
Alan Nash
Sondra Peoples
Bob Vickers

SOPHOMORES

President - Alvin Knight

Vice-President - Barbara Scott

Secretary - Barbara Wright

Treasurer - Tory Travis



Jim
Adkins

Bertha
Akers

Judy
Bateman

Gary
Bender

Janice
Barnard

Lloyd
Berry

Sharon
Bowker

Richard
Brooks

Charlotte
Chamberlain

Toby
Chamberlain

Sharon
Coleman

Darling
Connor

Dorothy
Crosby

Loretta
Clouse

Nadine
DeMaranville

Lawrence
Delana

Pat
Deay

Harrell
Dotson

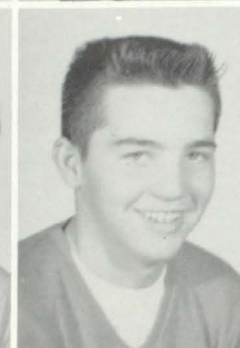




Leland Eastwood
 Karen Einhellig
 James Faunce
 Margaret Fenton



Pat Finnigan
 Janice Fogle
 Teresa Ford
 Dalene Freeman



Alma Garr
 Phyllis Garstecki
 Donna Gibson
 Roy Goble



Bill Hewitt
 Judy Hubbard
 Harvey Hundley
 Bill Harlan



Charles Hale
 Carolyn Jones
 Menelike Johnson El
 Karen Keen



Rudy Kellner
 Harold Klamm
 Alvin Knight
 Peggy Langford

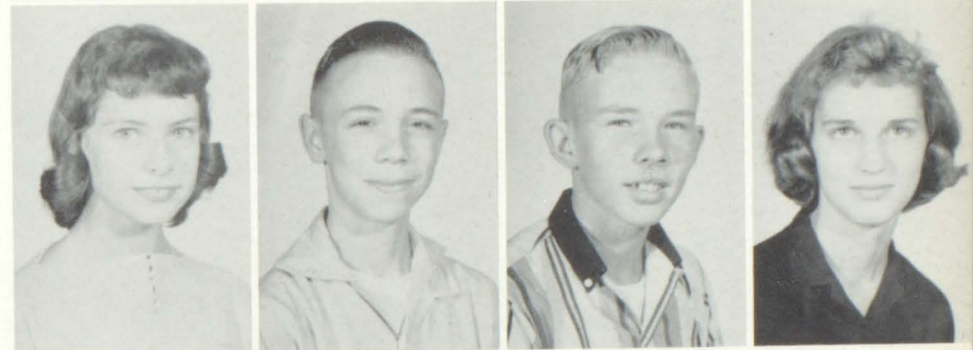
Sharon Lawrence
 Ed Lynn
 Donald McAnerny
 Gwen McCallop



Walter McCaslin
 Beverly McDowell
 Mary Ann Meade
 David Meinke



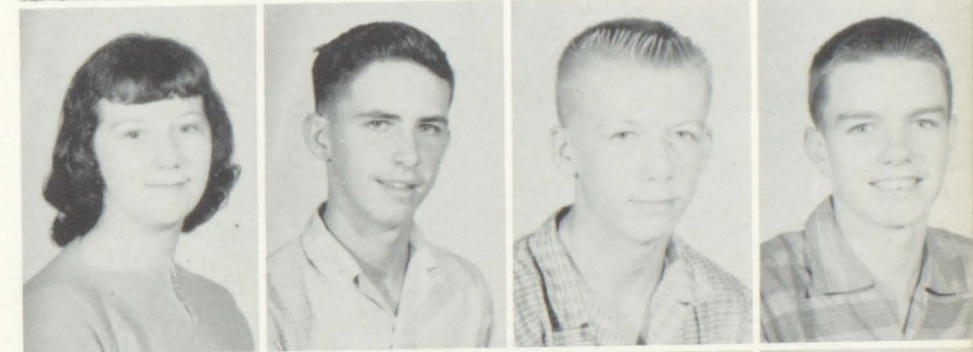
Sharon Merritt
 Mike Metzler
 Tim Mitchell
 Darlene Mize



George Moore
 Dortha Moss
 George Murray
 Sterling Newton



Juanita Pickett
 George Pollock
 Dennis Powell
 Glen Price

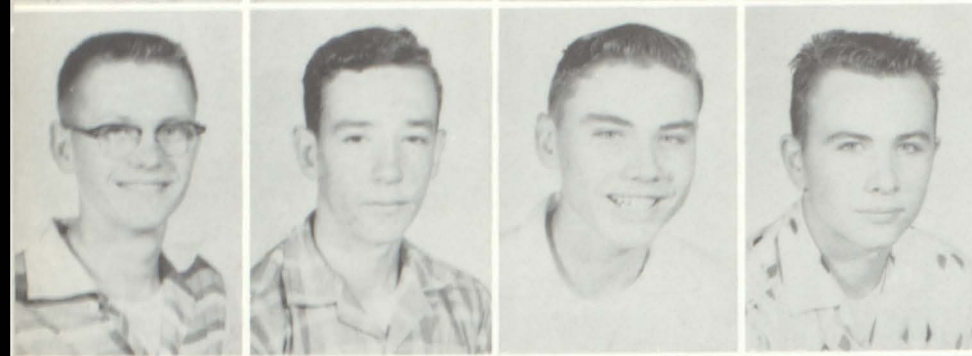


Richard Pruitt
 Janice Rehm
 Mary Lou Reynolds
 Joyce Ruby





Jane Saunders
Susan Saunders
Mike Schrader
Barbara Scott



Rudy Scott
Bill Sedgwick
John Sullivan
Bill Tabor



Sharon Taylor
Willis Thomas
Torie Travis
Sandra Trumble



Don Vickers
Myrna Wagner
Warren Watkinson
Carol Wendt



Sally Wilkerson
Mike Woolf
Barbara Wright
John Zaring



Virginia Champlain
Terry Ripple
Kenny Beach
Thomas Curnutte

FRESHMEN

President - Sandra Yount

Vice-President - Marilyn Wright

Secretary - Martha Wasson

Treasurer - Gayle Cox



Sherril Adair
Jean Anderson
Tom Anderson



Roger Barney
Eva Lee Boyles
Kathy Beach
Samuel Bey



Mike Boyce
Sandra Boyd
James Bussy
Carol Cannon



Joe Cannon
Phillip Carl
Johnny Carson
Bill Claxton



Bob Cline
Carolyn Copenbarger
Gayle Cox
Mary Crosby



Mary Cuddy
Charlotte Dale
Jack Davis
Marian Davis



Carolyn De Maranville
Maxine De Maranville
Ruth Dunkin
Dan Dunn



Pat Dunnivan
Jean Ann Elmer
Darlene Espy
Jim Feleay



Frank Fenton
Gayle Fishbaugh
Vernetta Ford
Earl Freeman



Lloyd Forrester
Venissa Gardner
Larry Gebhardt
Junior Gomez



Claude Gumm
Sharon Hall
Mary Harrell
Lily Hauetter

Bill Hilliard
 Dan Hodges
 John Holloway
 George Hounker



Beverly Huggins
 Harchel Hylton
 Johnny Hylton
 Patty Isabell



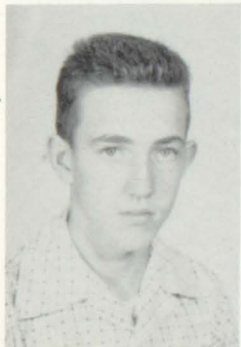
Sylvia Issitt
 Edward Johnson
 Sharon Jones
 Janice Jones



Raymond June
 Linda King
 Frank Knight
 Patty Knutson



Bill Kuchenthal
 Sara Kuhn
 Glenna Layman
 Linda Lehman



Bill Le Row
 Charlene Lewis
 Joyce Lindsey
 Sandra Long





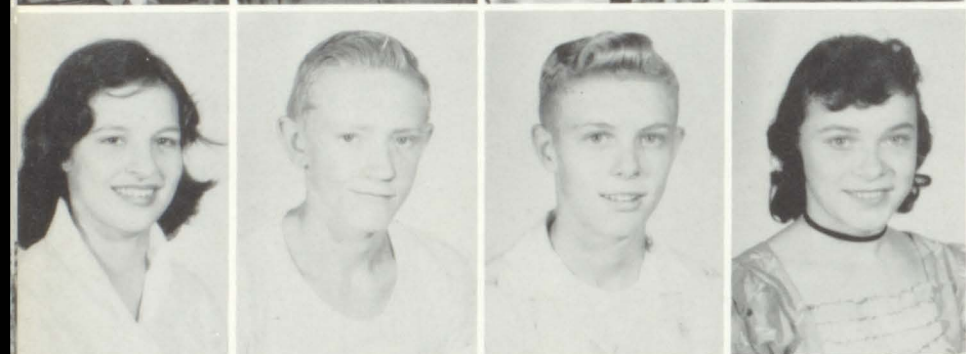
Rosemary McAnerny
Willie McWashington
Connie March
Rosie Miller



Dean Miller
Betty Millsap
Sharon Mitchell
Mary Ellen Moffitt



Charles Monnell
Larry McCord
Bob Neal
May Ella Newton



Martha Newton
Frank Norich
Eric Nyman
Patty Orser



Jerry Pembleton
Judy Pettis
Judy Phillips
Betty Pilger



Beverly Pinkepank
Harley Piper
John Price
Darlene Rader

Patty Reynolds
 Mary Ann Richardson
 Bonnie Sandburg
 Maxine Sandburg



Karl Schiedt
 Lazonna Scott
 Pat Shehan
 Mary Smith



Rosalie Sowers
 Bobbie Sparks
 Irene Stoneking
 Harlan Strode



Grace Sullivan
 Frank Swenton
 Levi Sweets
 David Taylor



Kathy Thompson
 Doris Tinder
 Beverly Umbenhower
 John Vaughn



Clinton Vickers
 Bob Wall
 Terry Wasson
 Martha Wasson





Thomas Watkinson

Betty Witcher

Rachel Wilkins

Suzanne Wiley

Bette Williams

Juanita Williams

Tommy Winkler

Marilyn Wright

Jerry Wright

Sandra Yount

Kenneth Curnutte



LAST WILL AND TESTAMENT

AS WE LEAVE THIS, "OUR OLD HIGH" THE SENIOR CLASS OF 1958 WOULD LEAVE
IN THE KEEPING OF THOSE WHO WILL FOLLOW AFTER US A FEW TREASURED POS-
SESSIONS WHICH ARE SO VERY MUCH A PART OF US.

Ola Anderson leaves her athletic ability to Bernice Gilbert.
Jean Pilger bequeaths her sweet smile to Sharon Merritt.
Diane Forester wills her brilliance to Marshia Beard.
Carol Backstrom wills her sense of humor to Shirley Holloway.
Donald Pogue cedes his wastebasket searching permit to Gerry Glynn.
Frances Foster wills her speech qualities to Evelyn Mitchell.
Katleen Barb leaves her managing ability to Loretta Conway.
Martha Pollock gives her energy to Sharon Coleman.
Patty Glynn leaves her job of Pep Club President so some lucky (?) Junior.
Richard Goodseal leaves some records in sports.
Gary Barney leaves his dancing ability to Alan Nash.
Richard Powell relinquishes his treasurer's money to Mitzi Dunn.
Shirley Beach wills her sweet disposition to Barbara Byers.
Roger Groh leaves some lonely underclassman girls.
Delores Blancarte wills her nonchalant manner to Sherwood Sprout.
Judy Reynolds surrenders her Tender Trap to some unfortunate female.
Billie Jo Hedden wills her half year of English IV to anyone who can tackle the other half.
Robert Boyce leaves his vocabulary to Alva Jo Freeman.
Jim Hemphill wills his blushing smile to Larry Goble.
Richard Brauer leaves relieved and thankful teachers.
Samuel Rosenthal wills his long basketball legs to Harold Klamm.
Oleva Brogden leaves her homemaking ability to Mary Ann Hartegan.
Clyde Herrin leaves to make his fortune.
Kay Roudybush commits to Mary Hauetter her "friendly persuasion" ability.
Muriel Hoffine wills her ability to hold her temper to Joyce Leonard.
George Brown leaves -- at last.
Irvin Brunson wills his tumbling ability to Larry Forbach.
Carol Ruby assigns her first chair clarinet to Connie March.
Russell Clark leaves his quiet manner to Larry Platt.
Judy Hymer leaves to go to Hawaii.
Gerry Saunders entrusts Ed Roberts with his complimentary way with teachers.
Sandy Hynds leaves her cluttered locker to anyone who can get his books into it.
Jack Cline leaves for married life.
Royce Kahle leaves his record of automobile accidents unbroken.
Marjorie Coiner wills her "gift of gab" to Carol Deonier.
Linda Klahr leaves her personality plus.

7

Gayle Schrader leaves her friendly personality to Sharon Bowker.
Alice Crosby leaves her singing talents to Grace McDonald.
Marilyn Klamm departs for the hospital.
Shirley Linden wills her quiet ways to Midge Martin.
Ronnie Seaton grants his co-operation to Bob Frey.
Lenzie Crosby wills his gold tooth to Grady Newton.
Larry Malone leaves some underclassmen with broken hearts.
Mickey Dale bequeaths his slender build to Larry Oliver.
Alice McCleary leaves her chair at the calculator.
Judy Shanafelt departs, never to twirl a baton again.
William McDonald unwillingly leaves his basketball uniform.
Joyce Delana bestows her height upon Carol Bundy.
Ealaine Smith sends her giggle, with best wishes, to Julie Wilkerson.
Patti McLaughlin surrenders her hair rinse (?) to Sharon Worley.
Martha Meinke leaves some shell-shocked teachers.
Sherman Deonier wills his slow western drawl to Gerry Garstecki.
Relna Dickson leaves her tiny features to Clydeen Edmonds.
George Dingey gives his harem to Gaylord Jones.
Ted Smith yields his ring to a certain underclassman.
Carolyn Miller wills her "noisy" manner to Virginia Shaw.
Bonnie Sprout departs, taking her big rock with her.
Tina Dunkin leaves to make a name for herself.
Larry Milliken wills his eastern accent to anyone who can master it.
Morris Elliott leaves his "strong right arm" to Gary Slick.
Frank Emery wills his ability (?) to go steady to Gary Vaughn.
Jim Milner leaves his tire tracks and safe driving award.
Catherine Neal wills her shyness to Barbara Dangerfield.
Ellis Sowers appoints Lanny Jones to carry on his lumbering walk.
Hurshel Surritte leaves and hopes to take Patty with him.
John Swenton deposits his political opinions in the care of one, Mr. M. T.
Mary Espy leaves her acting ability to Sharon Zimmerman.
Forest Evans wills his talkativeness to Ronnie Shultz.
John White assigns Jim Reynolds to carry on his punctuality record.
Deanna Padgett leaves her many crowns for some hopeful underclassman.
Anna Wilson leaves her outstanding attendance record to Martie Kuhn.
Alice Wilson commits her Bible Club activities to Judy Bateman.
Daryl Wheeler entrusts John Jesse White with his athletic ability.
Fred Stroud withdraws, leaving Mr. Venturella in peace.
Betty Wilson bequeaths her cute matched outfits to Barb Wright.
Ronnie Boczek surrenders his chewing gum to David Taylor.
Lonnie Cannon leaves his long, wavy hair to Stanley Goble.
Sharon Curran donates the manuscript of her book, "Nine Hundred and Ninety-nine Ways to Play a Practical Joke", to Carolyn Roberts for completion.

A LOOK INTO THE FUTURE

The following is taken from the journal of one John Swenton, former presidential candidate.

February 3, 1981. Tonight I entertained the new President of the United States, Relna Dickson. I had the dubious honor of being the first male to be defeated by a female candidate for president. The dinner was held in the ballroom of the Hotel Deonier with many honored guests from throughout the country in attendance. The proceedings were opened with an address by Linda Klahr, Secretary of Defense, on the development of more advanced space travel.

Timing it just right, Mr. Robert Boyce, President of Celestial Space, Incorporated, and his chief rocket designer, John D. White, entered as Linda was concluding her address. They were accompanied by Muriel Hoffine, head lobbyist for the Rocket Stewardess', and Delores Blancarte, rocket interior decorator.

About this same time, Morris Elliott, boxing champion of the Navy, tried to crash the party and was led to the door by George Brown, head waiter. A few minutes later, the entire hotel health staff was Dr. Marilyn Klamm, including Nurses Judy Shanafelt, Frances Foster, and Martha Pollock, was summoned to an emergency call on the sidewalk in front of the hotel. Messrs. Roger Groh and Ron Seaton, who are attending a Morticians' convention in the hotel, wandered in virtually unnoticed during this disturbance.

Finally after much confusion, we began to eat. The pre-dinner cocktails were served by Ronald Boczek and his hotel staff. There was a small incident as Royce Kahle, Hops King, and his laboratory supervisor, Clyde Herrin demanded that their beverage be served. The appetizer, Consomme a la Beach, was then served, much to the delight of the guests.

An accident occurred when Jim Hemphill, noted women wrestlers' referee, bumped into waiter Hurshel Surritte, as he was serving the Consomme to Alice McCleary, former champion trapeze artist, and her beautiful Gary Barney Original was ruined. She left immediately with her escort Mr. Jack Cline, noted racing enthusiast, despite my efforts to calm her.

About this time, I guess the thought of all this food that he had missed selling was too much for Russell Clark, Supermarket King, and he literally went stark raving mad; and Drs. Milner and Pogue were summoned from the mental ward of the nearest hospital the Curran Health Clinic. Dr. Curran, founder of the clinic, assured me that she was positive that the case was not beyond help.

The next course consisted of a choice of either pheasant or mountain trout, thoughtfully provided by Junior Wall, head of the Fish and Wildlife Conservation Bureau.

The dessert was a new type of ice cream created by Oleva Brogden, Homemaker of the Year, and manufactured by the Hedden and Linden Ice Cream Company.

Many guests were gathered in the magnificent hall decorated by the Hymer, Reynolds, Schrader, and Alice Wilson Decorating Agency. I was extremely honored to have these people as my guests: from the Sports world -- Ola Anderson, Olympic swimming champion; Sam Rosenthal, Pro-basketball star; Daryl Wheeler, Pro-football halfback; Irvin Brunson, famous gymnast; and Mickey Dale, general manager of the Kansas City Yankees, who was accompanied by his private secretary, Joyce Delana.

Many respected educators were also present, among them were Diane Forester, Dean of Women at UCLA; Jean Pilger and Carol Backstrom, private tutors employed by the President; Anna Wilson, missionary who has traveled extensively on the Moon; Elaine Smith, famous elementary educator at K-State; Kay Roudybush and Carol Ruby, co-founders of the first Conservatory of Music in the Arctic (for Eskimos?) and Dr. Mary Espy, head of the Science Department at MIT.

Famous show business people were also in attendance: Alice Crosby, famous spiritual singer and her brother - manager, Lenzie; the world renowned Marge Coiner, champion yodeler; Deanna Padgett, well-known torch singer; Richard Goodseal, calypso singer; and Bonnie Sprout, recent Academy Award winner.

Among the other famous people present were Richard Brauer, president of the Belch-Fire Automobile Co.; Forest Evans, Irish Sweepstakes winner; George Dingey, daring news-reel photographer; Professor Richard Powell, celebrated chemist; Ellis Sowers and Ted Smith, western land magnates; Patricia Glynn, Pulitzer Prize winner for her thrilling horror stories; Sandra Hynds, president of the Bluebirds on Pluto; William McDonald, Uranium tycoon; W. G. Saunders, Wall Street executive; Patrice McLaughlin, world recognized hair rinse authority; Catherine Neal, field representative for the Stroud Universal Toy Building Blocks Co.; and Tina Dunkin, newly-hired bodyguard of the President.

The evening was then climaxed by special appointments to governmental positions by President Dickson. Martha Meinke was appointed Chief Justice of the Supreme Court and Betty Wilson is the new clerk of the Court. Kathleen Barb is now the President's chief interpreter to the Pan American Union, a position which she will find anything but dull, I am sure. The new Chief of Staff of the Waves is Larry Malone. Frank Emery was appointed Chief of the FBI and Carolyn Miller is his new assistant. The new head janitor at Fort Knox is Lawrence Milliken.

The evening was a complete success and I feel that almost everyone enjoyed himself to the utmost.



SPORTS



FRONT ROW, Left to Right: F. Emery, D. Wheeler, M. Elliott, R. Goodseal, L. Malonie, R. Groh, G. Barney, B. McDonald. SECOND ROW: C. Laverack, J. Garstecki, R. Pruitt, M. Woolf, M. Reynolds, L. Jones, L. Platt, L. Goble. THIRD ROW: Mr. Kimbrough, T. Chamberlain, L. Chamberlain, K. Wolf, G. Jones, H. Klamm, H. Hundley, D. Meinke. FOURTH ROW: Mr. Tewell, R. Barney, J. Price, J. Feleay, J. Cannon, B. LeRow, Mr. Gorsky.

ELK FOOTBALL CO-CHAMPIONS

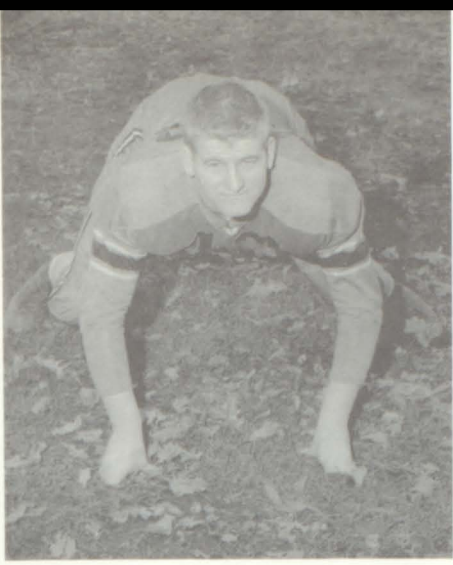
The Bonner Braves closed the 1957 grid season as Co-champions of the East Kansas League with a 6-2 record. This is the first championship football team in the history of Bonner High. The Braves defeated Rosedale, their co-champion partners.

| BONNER | | OPPONENT'S |
|--------|------------|------------|
| 19 | Tonganoxie | 6 |
| 13 | St. Agnes | 25 |
| 27 | Rosedale | 25 |
| 14 | Paola | 0 |
| 28 | Turner | 32 |
| 52 | Osawatomie | 14 |
| 20 | Olathe | 16 |
| 48 | DeSoto | 6 |



COACHES

Kenneth Tewell, Vaughn Kimbrough, Ed Gorsky.



ROGER GROH, Tackle



RICHARD GOODSEAL, Halfback



GARY BARNEY, Center



BILL MC DONALD, End



DARYL WHEELER, Fullback



FRANK EMERY, Tackle



LARRY MALONE, End



MORRIS ELLIOTT, Guard



LANNY JONES, Fullback



MICK REYNOLDS, Quarterback



RICHARD PRUITT, Guard

MIKE WOLF, Halfback



DAVE MEINKE, Guard



JERRY GARSTECKI, Tackle





FRONT ROW, Left to Right: Gary Slick, Larry Milliken, Bill McDonald, Harold Klamm, Coach Gorsky.
 BACK ROW: Ed Lynn, Sam Rosenthal, Richard Goodseal, Mike Woolf, Ellis Sowers, Mike Reynolds,
 and Alvin Knight.

VARSITY BASKETBALL TEAM

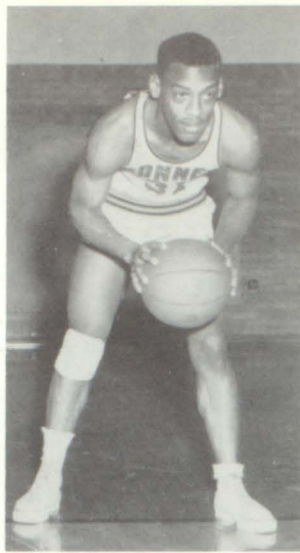
The Braves' Varsity Team had four returning lettermen this year. They closed the season with a tie for third place with Turner in the East Kansas League.



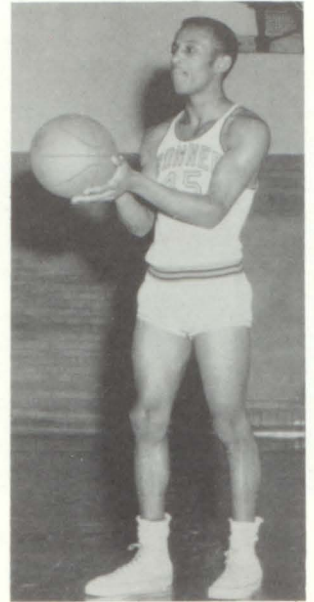
The varsity wearing new warm-up jackets specially designed by Coach Gorsky.



Larry



Bill



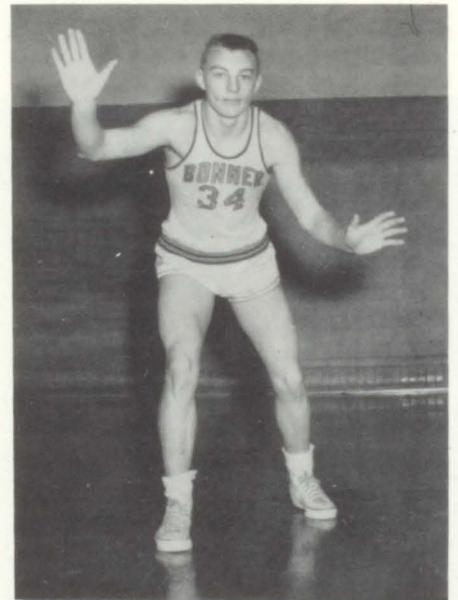
Richard



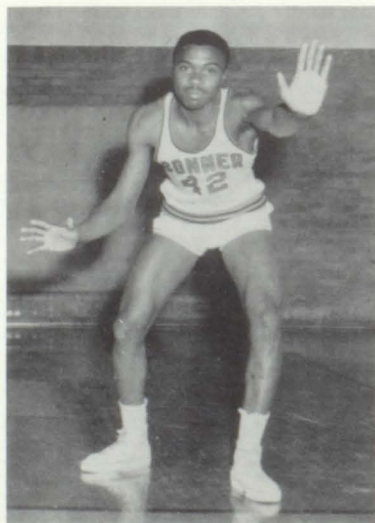
Mike R.



Alvin



Mike W.



Sam



LEFT TO RIGHT: Garry Slick, Harold Klamm, Ed Lynn, Glenn Price, Ellis Sowers, Menelike Johnson El, Richard Pruitt, Lanny Jones, and Mr. Vaughn Kimbrough, Coach. Not Pictured: George Murray.

B - TEAM

FRESHMAN SQUAD

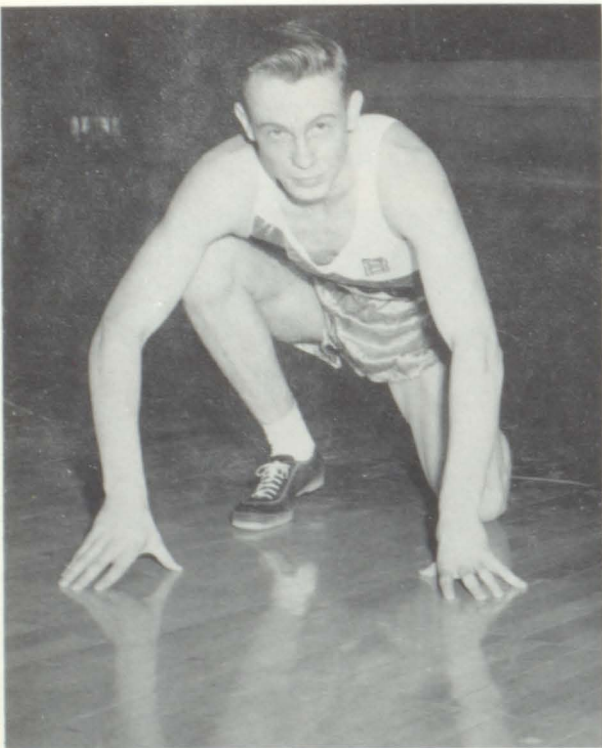


FRONT ROW, Left to Right: E. Freeman, T. Wasson, D. Dunn, M. Boyce, G. Huonker, J. Pembleton, R. Barney, D. Taylor, B. Einhellig. BACK ROW: R. Jennings, J. Wright, B. Hilliard, J. Holloway, F. Knight, B. LeRow, B. Claxton, J. Price, J. Fealey, E. Nyman, and Mr. Kenneth Tewell, Coach.

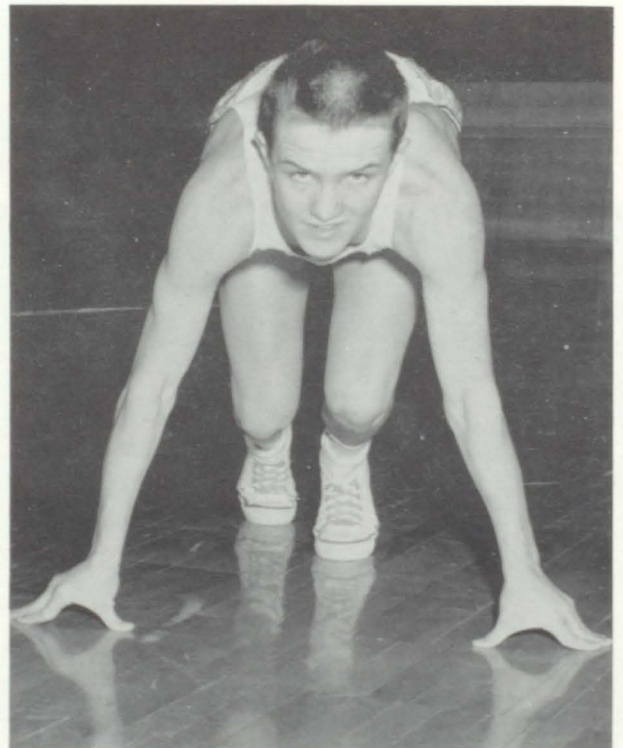


LEFT TO RIGHT: Walter McCaslin, Gary Slick, Jim Reynolds, Mr. Snyder, Coach; Bob Boyce, Larry Milliken, and Bob Bussey.

CROSS COUNTRY TRACK TEAM



JIM REYNOLDS

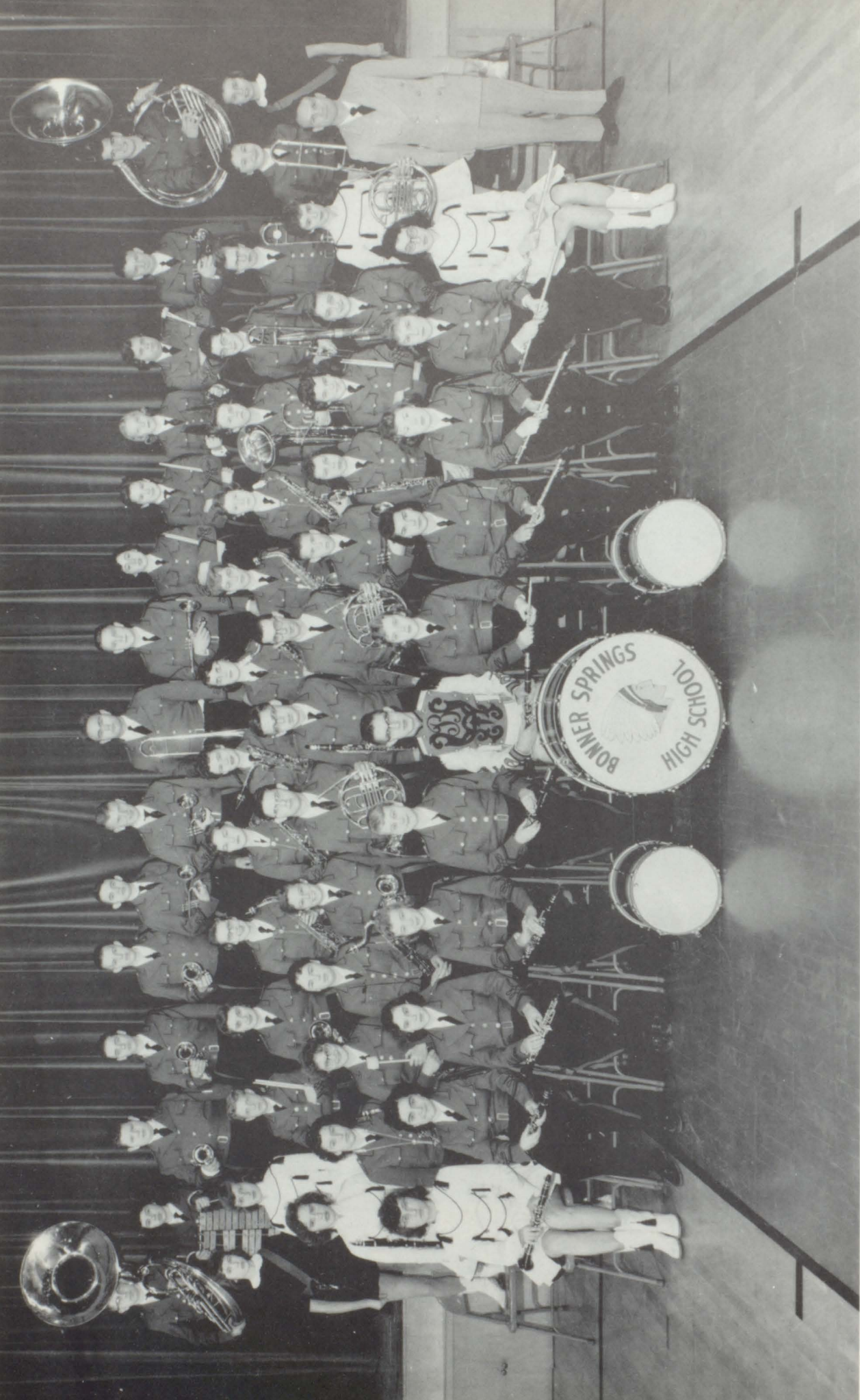


GARY SLICK

The rolling hills of the Lake Forest golf course last Fall saw 6 boys practice for the two mile cross country. Although there is no organized league, the team competed with teams from Wyandotte, Haskell, Topeka, Sumner, Olathe, Turner, and Shawnee Mission. This is only the second year for the C. C., but growing interest points toward the organization of a league in the near future. All of the boys lettered this year including Walter McCaslin who received a reserve letter.



ORGANIZATIONS



THE BAND



MAJORETTES

Charlotte Chamberlain, Elaine Smith, Betty Lawrence, Judy Shanafelt, Connie March.

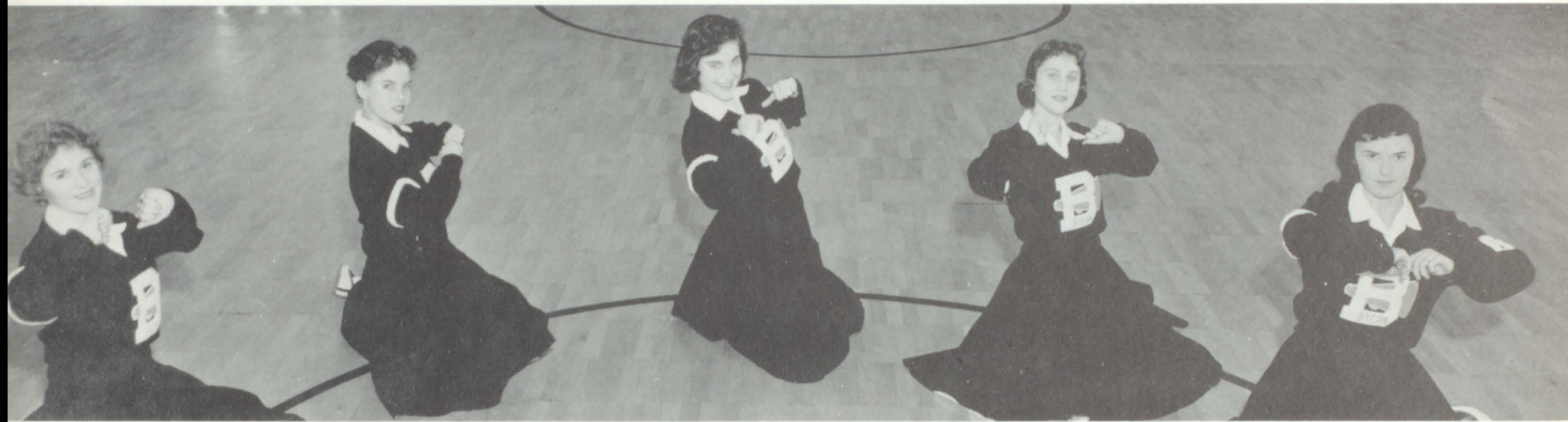
The fifty-two piece band, under the direction of Hugh Ferguson marched in several parades and at all of the home football games. In the spring the concert band played two numbers at the district music contest. The band completed a very full school year by playing at the commencement exercises.



DRUM MAJOR
Bob Frey



THE PEP CLUB



B-TEAM CHEERLEADERS

Betty Whitcher, Judy Pettis, Sandra Yount, Suzanne Wiley, and Gayle Cox.



VARSIITY CHEERLEADERS

Carol Sue Bundy, Deanna Padgett, Sharon Worley, Midge Martin, Carolyn Roberts.



VARSIITY ALTERNATE CHEERLEADER

Betzy Metzler

B-TEAM ALTERNATE CHEERLEADER

Sandy Long



PEP CLUB OFFICERS

| | |
|----------------------------|-----------------|
| President | Pat Glynn |
| Vice-President | Clydeen Edmonds |
| Secretary | Kathleen Barb |
| Treasurer | Mitzi Dunn |
| Sergeant-at-Arms | Diane Forester |

THE STUDENT COUNCIL



President, John Swenton. FIRST ROW: S. Yount, S. Saunders, L. Klahr. SECOND ROW: C. Roberts, G. Glynn, B. Frey. THIRD ROW: R. Kellner, B. Hilliard, A. Knight, R. Dickson, R. Powell, Mr. Snyder, Sponsor.

BIBLE CLUB



J. Vaughn, C. Coppenger, R. Dickson, M. Newton, M. Fenton, M. Smith, H. Everman, T. Watkinson, Mr. Palmer. SECOND ROW: D. Freeman, T. Dunkin, M. Harrell, M. Metzler, L. McCord, S. Hynds, C. Jones, J. Bateman, B. Wilson, B. Byers, Miss Thomason. THIRD ROW: B. Hewitt, A. Garr, M. Newton, S. Chaylor, M. Crosby, D. Crosby, L. McDonald, G. Bender, R. Wilkins, C. Cannon. FOURTH ROW: J. Ruby, J. Phillips, P. Orser, R. Kellner, G. Schrader, R. Dunkin, B. Ackers, P. Reynolds, J. Saunders, B. McDowell, M. Wagner. FIFTH ROW: C. Miller, D. Orser, J. Rehm, J. Pickett, P. Langford, A. Wilson, S. Lawrence, J. Barnard, C. Dale, J. Vaughn, R. Sowers, L. Clouse, A. Wilson. SIXTH ROW: G. McDonald, G. McCallop, K. Beach, W. Watkinson, B. Sedgwick, M. Meinke, L. Krueger, S. Linden, C. Edmonds, D. Meinke, L. Berry, S. Seibel, B. Dangerfield.



SEATED: M. Espy, K. Roudybush, R. Powell, E. Roberts, B. Frey, J. Wilkerson, S. Bush, C. Bundy, Mrs. Stith, Sponsor. STANDING: M. Dunn, J. Pilger, S. Coleman, L. Klahr, K. Barb, C. Backstrom, L. Jones, G. Saunders, P. Glynn, B. J. Hedden.

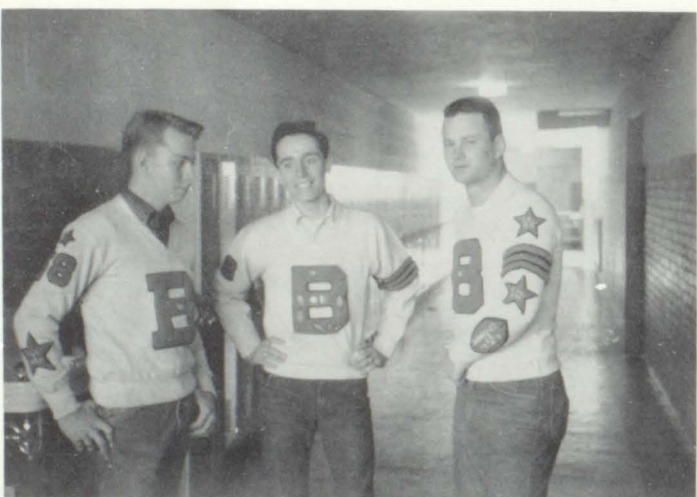
THE POW WOW



PRODUCTION STAFF, STANDING: B. Metzler, J. Hymer, J. Reynolds, J. Milner, L. Forbach, A. Wilson, B. Wilson, B. Sprout, D. Blancarte, D. Forester, M. Pollock, B. J. Hedden. SEATED: D. Pogue, M. Hartegan, Ola Anderson.



FRONT ROW, Left to Right: G. Glynn, G. Slick, L. Milliken, Mr. Kimbrough, Sponsor; L. Jones, L. Malone. SECOND ROW: D. Meinke, K. Wolf, J. Reynolds, G. Barney, M. Reynolds, B. McDonald, R. Pruitt. THIRD ROW: D. Wheeler, R. Goodseal, R. Groh, F. Emery, E. Sowers, M. Woolf, M. Elliott, J. Garstecki, B. Boyce.



B-CLUB OFFICERS

- President Larry Malone
- Vice-President Larry Milliken
- Secretary-Treasurer Morris Elliott

THE B CLUB



FRONT ROW, Left to Right: Kathleen Barb, Diane Forester, Richard Powell, Salutatorian; Linda Klahr, Valedictorian; Carol Ruby. BACK ROW: Mary Espy, Deanna Padgett, Bob Boyce, Clyde Herrin, Gerry Saunders, John Swenton, and Martha Meinke.



VALEDICTORIAN

Linda Klahr

SALUTATORIAN

Richard Powell

FUTURE HOMEMAKERS OF AMERICA

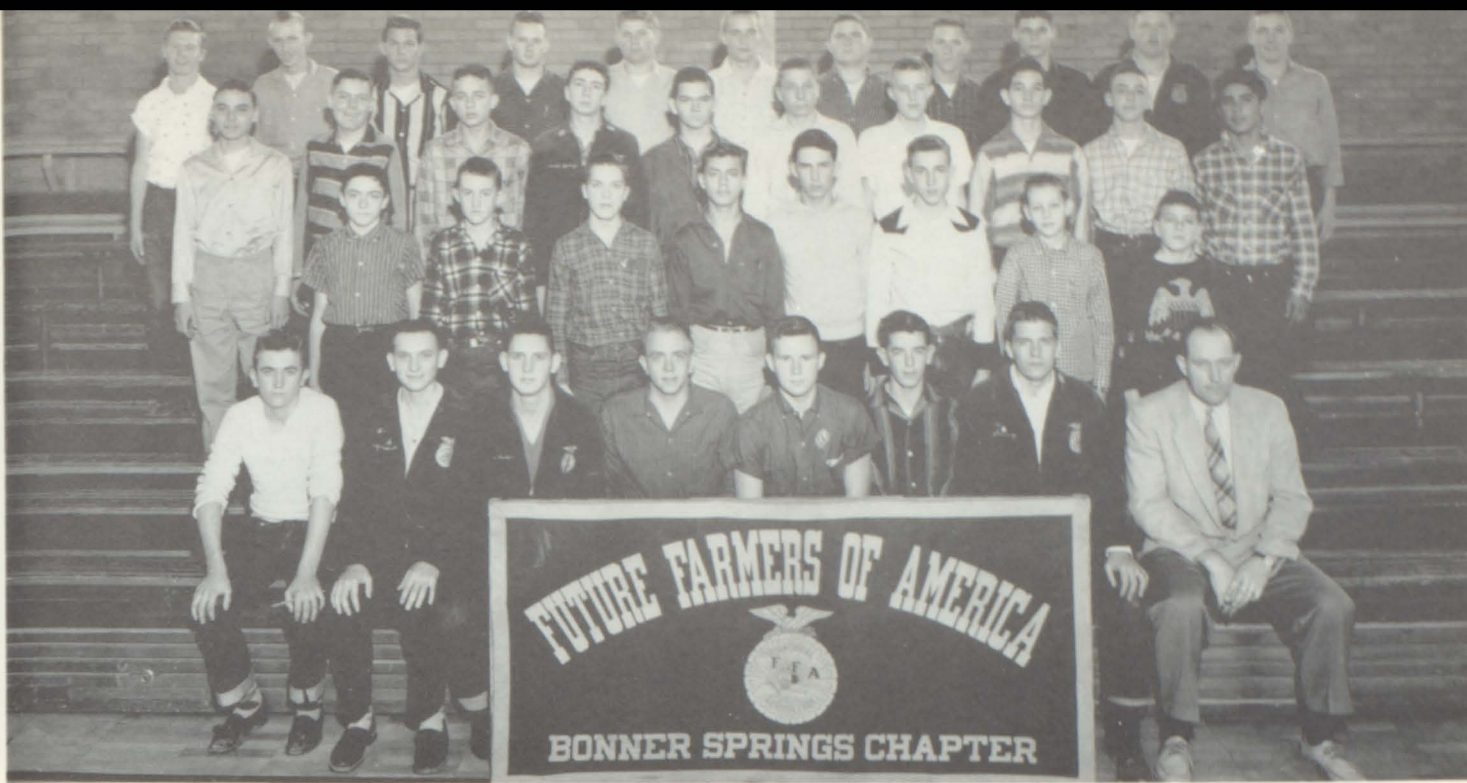


FIRST ROW: Miss Carlson, O. Anderson, E. Smith, M. Hoffine, B. Gilbert, P. McLaughlin, O. Brogdon, C. Roberts, M. Klamm, R. Dickson, Mrs. Boyd. SECOND ROW: S. Merritt, B. Chance, J. Vaughn, G. Layman, P. Deay, J. Elmer, S. Mitchell, L. Hanetter, M. Smith, J. Shanafelt, B. Huggins, M. Moffitt. THIRD ROW: M. Sandburg, C. DeMaranville, J. Barnard, B. Pinkepank, S. Hall, B. McDowell, J. Ruby, J. Saunders, B. Williams, L. Klahr, S. Hynds, A. Brogdon. FOURTH ROW: D. Gibson, P. Isabel, S. Lawrence, M. Espy, L. Lehman, M. Wright, R. Wilkins, D. Rader, B. Pilger, M. Coiner, K. Roudybush, R. McAnerney, K. Thomason. FIFTH ROW: J. Phillips, S. Adair, S. Trumble, P. Finnigan, C. Clapper, S. Worley, M. Dunn, D. Renner, S. Zimmerman, C. Watkins, V. Shaw, K. Mikesich, P. Reynolds.

DEBATE CLUB



LEFT TO RIGHT: Mr. Jennigan, J. Young, R. Kellner, J. Wilkerson, G. Price, B. Boyce, G. Saunders.
SEATED: S. Bush, C. Roberts, S. Sprout.



FRONT ROW, Left to Right; G. Jones, G. Wendt, J. Hodges, R. Kahle, T. Smith, L. Goble, G. Barney, L. L. Van Petten, Advisor. SECOND ROW: J. Vaughn, T. Anderson, K. Sheidt, C. Gumm, G. Pollock, B. Kuchenthal, E. Wagner, B. Einhellig. THIRD ROW: J. Sullivan, T. Winkler, L. Adair, C. Spring, B. Vickers, J. Cannon, G. Hounker, C. Vickers, D. Hodges, J. Gomez. FOURTH ROW: C. Laverack, R. Neal, D. Vickers, M. Elliott, J. Garstecki, G. Leighty, R. Pruitt, M. Dale, F. Knight, L. Oliver, D. Meinke.

BONNER SPRINGS F.F.A. CHAPTER



Junior chapter members butchering.



Booth at Wyandotte County Fair showing important "links" in crop production.

LOS AMIGOS



FIRST ROW, Left to Right: S. Wiley, L. Jones, G. Slick, M. Martin, V. Roweth, L. Chandley, S. Sprout, Miss Lee, Sponsor. SECOND ROW: M. Moffitt, F. Foster, P. Brunson, H. Everman, M. Wagner, K. Mikesich, J. Rehm, A. Nash, B. Metzler. THIRD ROW: J. Pettis, J. Bateman, P. Deay, D. Dunn, B. Dangerfield, B. Hilliard, S. Peoples, B. Sedgwick, J. Young, L. Eastwood, P. Beach.

LE CERCLE FRANCAIS



FIRST ROW, Left to Right: L. Conway, D. Pogue, M. Kuhn, B. Boyce, C. Ruby, Miss Lee. SECOND ROW: K. Roudybush, B. Claxton, S. Bowker, D. Padgett, G. Saunders, L. Penny, S. Merritt, C. Jones. THIRD ROW: J. Hymer, W. McCaslin, M. Wasson, C. Hale, M. Dunn, D. Powell, L. Adkins, M. Beard.

LATIN CLUB



FRONT ROW: S. Coleman, S. Issitt, G. Layman, C. Roberts, M. Metzler, C. Wendt, L. Klahr, S. Bush. SECOND ROW: M. Reynolds, S. Saunders, T. Travis, S. Jones, J. Barnard, C. Chamberlain, J. Pickett, B. Scott, Mrs. Stith. THIRD ROW: C. March, R. Kellner, F. Swenton, L. Berry, E. Roberts, J. Reynolds, H. Hundley, J. Price, O. Brogdon. FOURTH ROW: C. Ruby, M. Dunn, J. Swenton, B. Frey, R. Powell, G. Price, G. Saunders, C. Watkins.

SAFETY CLUB



FRONT ROW: Mr. Hilbert, L. Hauetter, S. Merritt, G. Dingey, J. Milner, E. Lynn, S. Worley. SECOND ROW: C. Lewis, B. Huggins, R. Miller, G. Layman, V. Gardner, S. Lawrence, G. Cox, S. Issitt, S. Coleman. THIRD ROW: J. Ruby, L. Lehman, J. Davis, B. Williams, C. Chamberlain, J. Pettis, K. Beach, S. Long, S. Hynds, B. Whitcher. FOURTH ROW: D. Espy, M. Hoffine, D. Moss, J. Rehm, D. Gibson, P. Langford, S. Hall, L. Scott, M. Richardson, M. Sandburg, M. Wagner, G. Fishbaugh. FIFTH ROW: P. Beach, M. Demaranville, B. Cline, G. Saunders, R. Kahle, F. Fenton, D. Brauer, K. Mikesich, S. Wiley.



THESPIANS



FRONT ROW, Left to Right: Mr. Veach, Sponsor; R. Dickson, S. Beach, B. Sprout, J. Shanafelt, E. Smith.
SECOND ROW: L. Klahr, K. Roudybush, M. Espy, P. McLaughlin, P. Glynn, M. Coiner, D. Padgett.
THIRD ROW: K. Barb, M. Meinke, G. Saunders, G. Dingey, L. Malone, G. Barney, J. Delana, C. Backstrom.
FOURTH ROW: B. Boyce, J. Milner, R. Groh, C. Herrin, R. Kahle, F. Emery, E. Sowers, D. Brauer, R. Powell.

IDLERS CAR CLUB



FRONT ROW: J. White, G. Dingey, R. Goble, L. Malone, S. Goble, D. Brauer. BACK ROW: R. Groh, R. Shultz, F. Emery, J. Milner, R. Kahle.



**'AFTER FIVE'
ACTIVITIES**



HOMECOMING QUEEN

DEANNA PADGETT



PAT GLYNN
Senior Class



ELAINE SMITH
Pep Club



DONNA BRAUER
Junior Class

PAT JENNINGS
Sophomore Class



JUDY PETTIS
Freshman Class





"CURTAIN GOING UP"

The Senior Play, "Curtain Going Up" was presented on November 13 and 14 by a single cast of 17 Seniors. The play was a comedy drama portraying the sometimes amusing, sometimes trying situations arising in the production of a high school play.



Jay Barrington models Indian headdress during interview with John, Kathy, & Ger.



Everyone dancing during the sign-on of the show.

T
V
T
E
E
N
T
O
W
N

AUTOGRAPHS

Compliments to the Class
of "58"

BURDETTE JEWELRY

105 East Second

Bonner Springs Kansas

Compliments of

JOHNSON'S EVERYTHING STORE

125 Oak Street

Bonner Springs, Kansas

Congratulations to

Class of "58"

BONNER SPRINGS SAND &

MATERIAL CO., INC.

Phone 544

Compliments of

ALDEN HARRINGTON & SONS

FUNERAL HOME

214 Oak Street

Bonner Springs, Kansas

See

You

Tonight

At The

RIO THEATRE

105 South Nettleton Avenue

WATSON BROS.

A. F. Watson, Owner

Friendly Service Drug Store
Prescriptions
Accurately Filled

Phone 105

Bonner Springs, Kansas

Compliments of

MODERN CRAFTSMEN

222 Oak Street Phone 232

Bonner Springs, Kansas



THE DARI-DINE
101 Kump

COMPLIMENTS TO THE CLASS OF '58



THE HOME INSURANCE AGENCY

GLENN R. BARB, AGENT

INSURANCE OF ALL KINDS

BONNER SPRINGS, KANSAS

Phone 60

BONNER SPRINGS PAINT &
WALLPAPER

Seidlitz Paints
Imperial, Wallcrest, &
Nancy Warren Wallpapers

Phone 354

Bonner Springs Kansas

Compliments of

A. D. ROUDYBUSH

Heating & Air Conditioning

Phone 106 108 E. 2nd

Bonner Springs, Kansas

JONES IGA FOOD

"We're with you 100%"

Friendliest Store in Town

Phone 165 203 Oak

Bonner Springs, Kansas

Compliments to
Senior Class of 1958
from

BONNER SPRINGS CHIEFTAIN

116½ Oak

Phones 49 & 94

Compliments

of

BONNER SPRINGS LUMBER COMPANY

Jim Dressler, Mgr.

Phone 2 209-210 Oak

WRIGHT'S SKELLY SERVICE

101 Oak Phone 46

Bonner Springs, Kansas

WESTERN AUTO ASSOCIATE STORE

202 Oak Phone 546

Welcomes this year's Seniors
to the world of business
for which they are yet
to become a part.

Frank Loehr, Owner

ROUDYBUSH SERVICE STATION

L. M. ROUDYBUSH



Tires Mobilgas Mobiloil

Wheel Balancing

Batteries Road Service

Edwardsville Phone 525

"Congratulations to
the class of '58"

Congratulations, Class of '58

HARTEGAN GROCERY

Edwardsville Kansas

Phone 505

Best Wishes

To the Class of "58"

GROH'S CAFE

124½ Oak Street

Bonner Springs Kansas

Compliments

of

HARRY'S SHOE SHOP

Next to the Chieftain

SCOTT GOBLE SERVICE

111 East Third

Phone 487

Bonner Springs Kansas

Compliments

of

GIBSON'S BARBER SHOP

Phone 469 134 Oak

Bonner Springs, Kansas

Compliments of
BONNER SPRINGS
COMMERCIAL STATE BANK

YOUR HOMETOWN INDEPENDENT BANK

Member FDIC

Phone 13

201 Oak

Checking Accounts

Banking by Mail

Commercial Loans

Savings Accounts

Real Estate Loans

Travelers Checks

Installment Loans

Christmas Savings Club

Automobile Loans

Improvement Loans

THE OWL
HARDWARE CO.



Phone 28

226 Oak



BREWERS SUPER MARKET

"If it's good to eat, we
have it"

101 South Nettleton

Phone 32

Bonner Springs, Kansas

W. F. REHM AND SON
Real Estate & Insurance
Eulah M. Bush, Saleslady
Office Phone 268
Res. 68-J

JACKSON AND REYNOLDS

SERVICE STATION



Phone 287

Edwardsville

Kansas

COLEMAN IMPLEMENT CO.

J. I. Case and
Minneapolis Moline
Farm Machinery
Frigidaire Appliances
GMC Trucks
Parts Service

Telephone 243
Bonner Springs



FEDERATED STORE
123 Oak Street

FREY AUTO SALES

Complete Body Service

Genuine Ford Parts



Factory Trained Men

Cars & Trucks

228 Oak

Congratulations, Seniors of 1958

Phone 245

IRIS BUY WAY

Groceries, Meats

Food Locker Plant

Congratulations

To Class of '58

HURST'S BARBER SHOP

Second Street

Bonner Springs

**WHITE'S
DEPARTMENT STORE**

H. A. White, Owner

Wearing Apparel

&

Accessories

Dry Goods

109 Oak

Phone 27

Bonner Springs

Compliments to the

Class of 1958

BEN FRANKLIN STORES

Don Coffman, Mgr.

Phone 40

129-133 Oak

Bonner Springs

Kansas

**HENRY M. MANN
CONOCO SERVICE**

B. F. Goodrich Tires and

Batteries

Road Service

Phone 493

Bonner Springs

Kansas

**ED. ROBERTS
CHEVROLET CO.**



New & Used Cars & Trucks

Parts & Service

Phone 69

112 Oak Street

Bonner Springs

HUGHES SERVICE STATION



BILL HUGHES

Front and Cedar St. - Jct. #7 and #32

Telephone 465

P. O. Box 42

Bonner Springs, Kansas

Shop at

STU'S MARKET

Groceries & Meats

Santa Fe Depot & Loring Drive

Open Until Noon on Sundays

Compliments

of

LUTHER'S BARBER SHOP

Oak Street Bonner Springs

See

BEN WHITE

For

Insurance

Compliments

of

APPOLO CLEANERS

Pick Up & Delivery

122 Oak

Call 181

DEE'S SERVICE STATION
Mobilgas, Tires, Tubes, and
Batteries

Road

Service



111 Front Street Phone 182

Auto Supplies

&

Accessories

MARSHALL AUTO STORE

Phone 21

115 Oak

For All Your Insurance Needs

HULBURD INSURANCE AGENCY

113 South Nettleton

Box 114

Phone 152



Evelyn N. G. Hulburd

Bonner Springs, Kansas

Compliments of

TINDERS MARKET

322 North Nettleton

Phone 129

"The Big Little Store"

Compliments of

MC HENRY'S GROCERY

511 North Nettleton

Phone 231

TOTEM POLE BOOSTERS

BILL'S SANDWICH SHOP

KANSAS POWER & LIGHT CO.

BLAIR'S GARAGE

DR. ERNEST W. MITTS, M.D.

BONNER SPRINGS L-P GAS

DR. KENNETH L. MAY, M.D.

EDWARDSVILLE VARIETY

DR. W. D. MILLER, D.D.S.

HELEN'S BEAUTY SHOP

DR. D. O. WENDT, D.V.M.

LILE'S CAFE

DR. O. G. RHODES, D.C.

MAAS' GIFT SHOP

RUBY LAUNDRY

MACKEY'S SERVICE

VALLEY FEED & SUPPLY CO.

LONE STAR CEMENT CORPORATION

AUTOGRAPHS



INTER-COLLEGIATE PRESS

Publishers · Cover Manufacturers · Book Binders

FACTORY · HOME OFFICE

Kansas City

PRINTED IN U. S. A.

