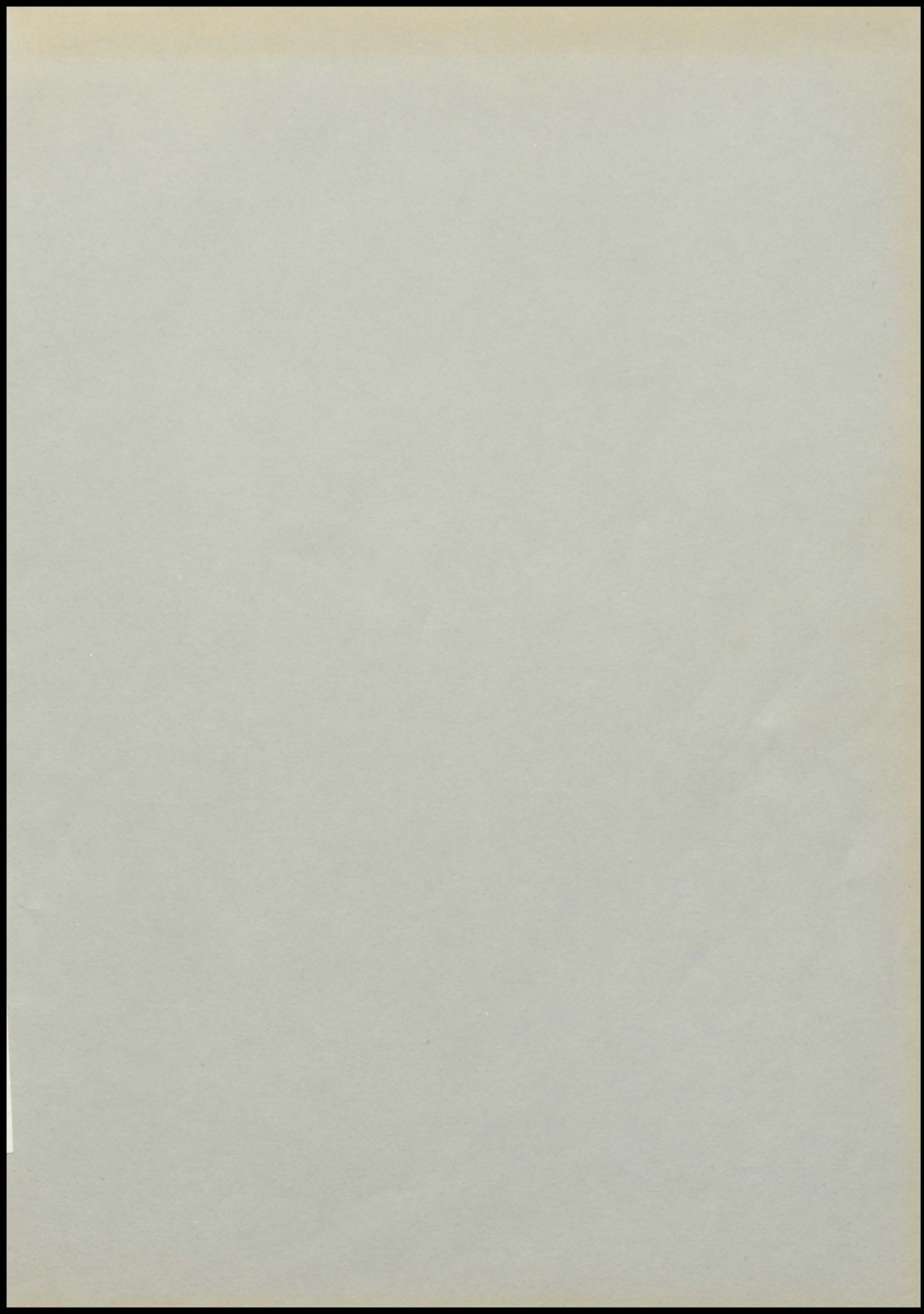
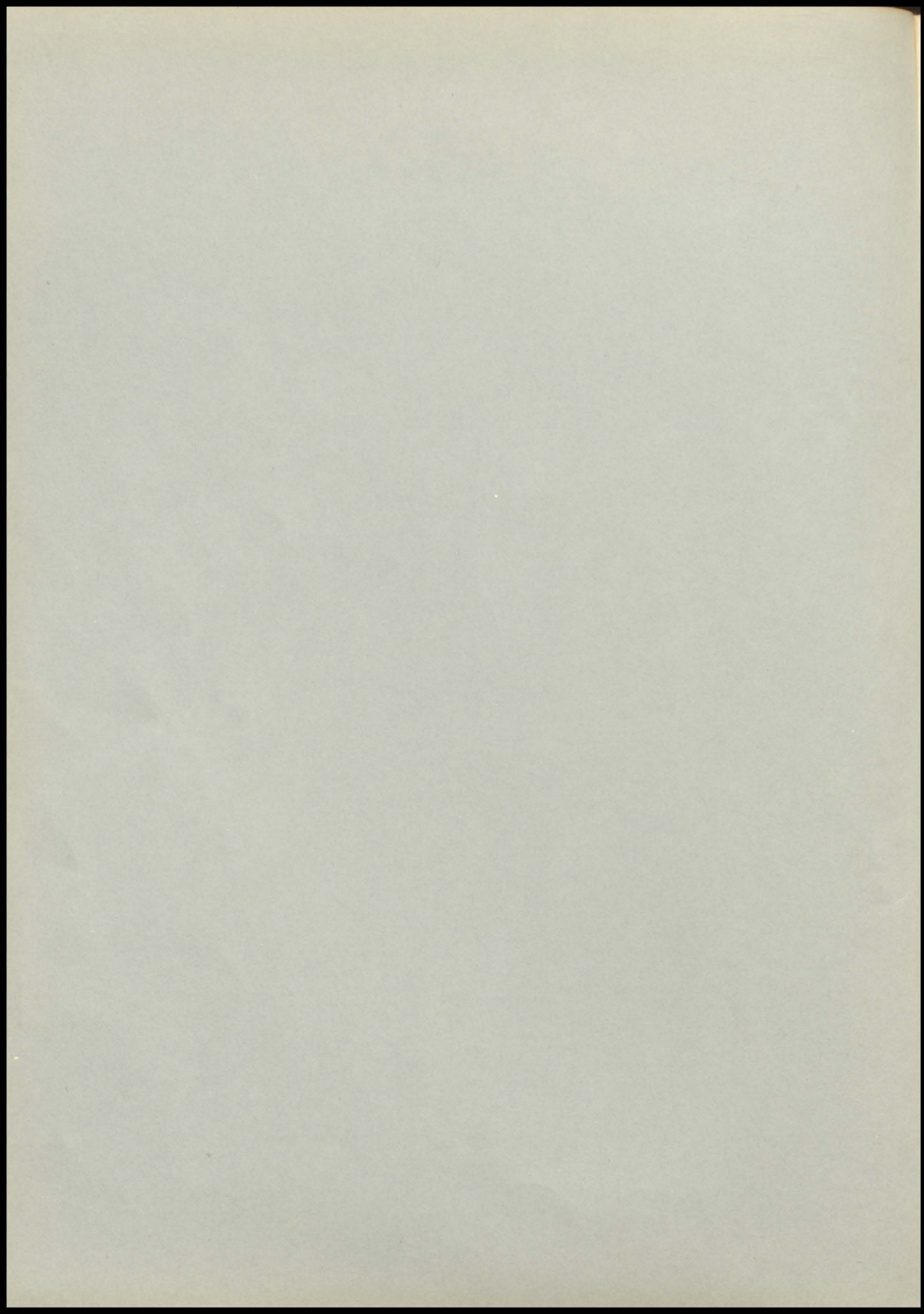




*otem
Pole*

1954

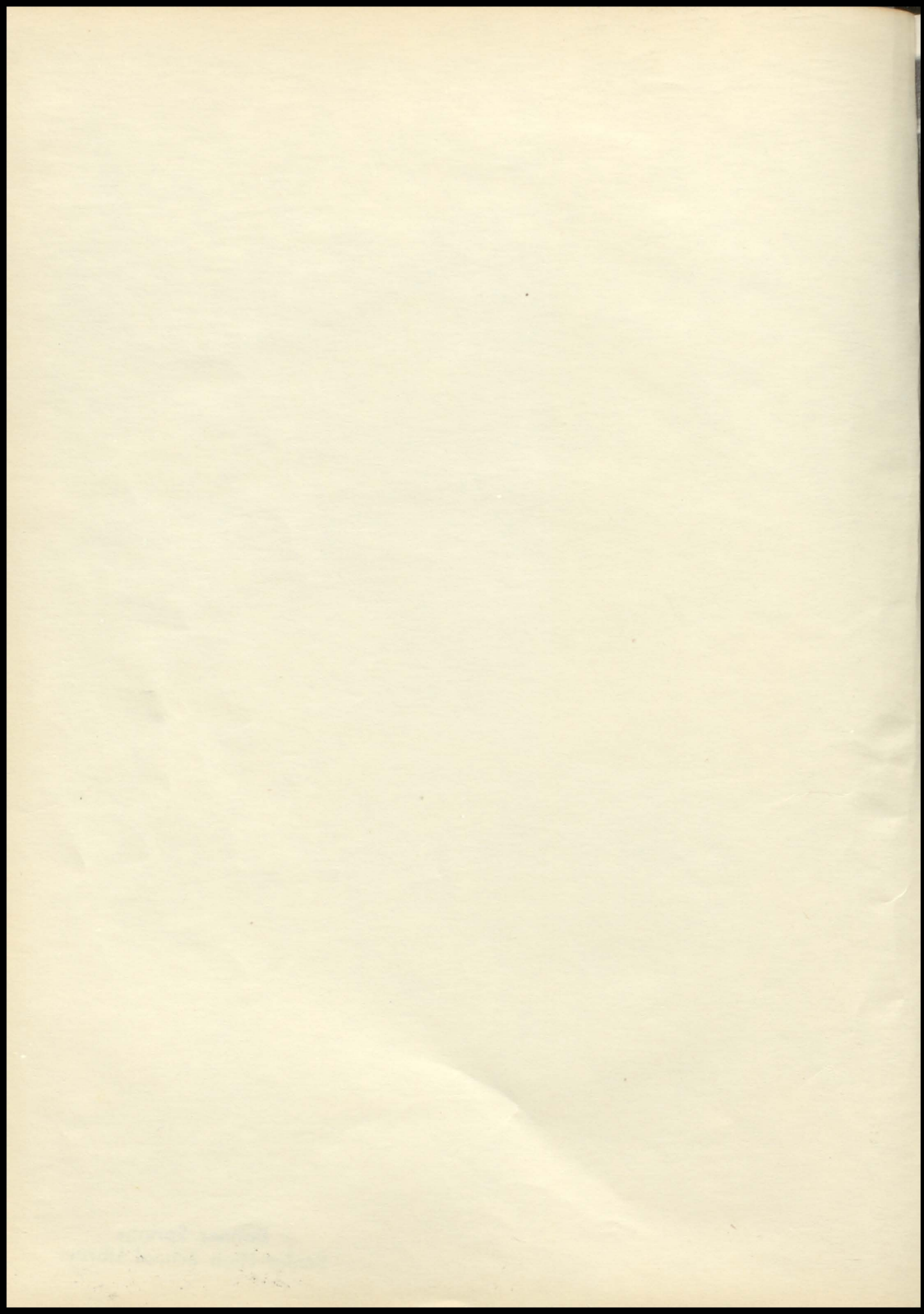




James Dale

1834

Spring, Kansas





*The
Totem Pole
1954*

Bonner Springs, Kansas



To You the Student

This— the 1954 edition of the Totem Pole, we dedicate to you, the student. It is your book because it is a pictorial history of the activities you have made possible and enjoyed through the past year. The work you

have accomplished and the fun you have had are all recorded here.

Also, this book must be dedicated to the high scholastic record held by our school in the hope that future students may realize the honor that comes from such a record.

And, finally, to the seniors we must dedicate this book. We hope that for each it will prove to hold those treasured joys of his high school life--the achievements, the disappointments, the



laughs, the tears, the work, the play--so that when he may look over this book in the years to come, he may remember the experiences of his high school career as happy memories.

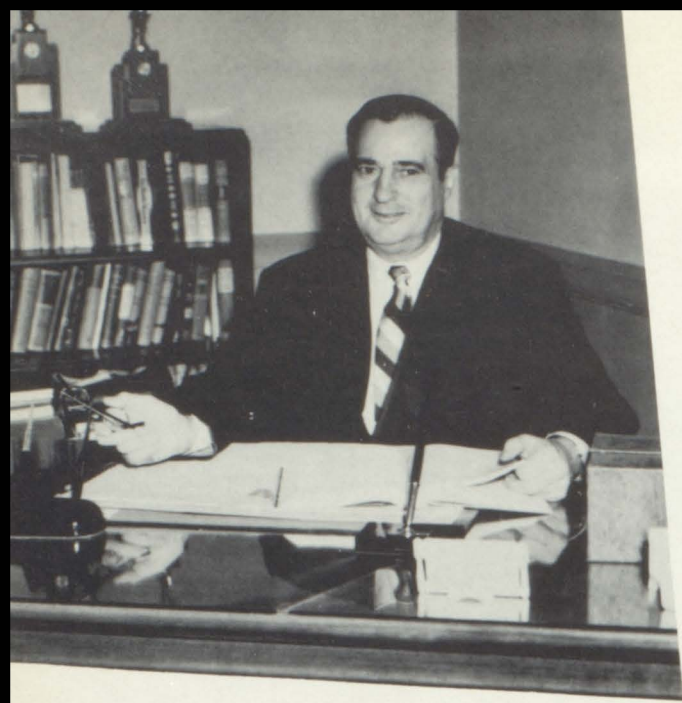
THE STAFF



Editor Beverly Hicks
Associate Editor	Carolyn Wilcox
Business Manager Dale Williams
Business Staff	Delores Savage Ronnie Baker
Administration Dorothy Bushnell
Seniors	Carolyn Hanson Jackie Burris
Classes Pat Barry Darrell Knight
Athletics Bud Lynn Ronnie Tate
Organizations Rosa Lee Einhellig Ardus White
Features Beverly Baum Marilyn Hanson Bob Cline
Photography Roberta Goble Delbert Mann
Typists Jessie Smith Nancy Smith
Faculty Adviser Lysle Stilwell



Administration



J. J. WHITEHEAD
Principal; B. S. , Kansas State Teachers College, Pittsburg;
M. S. , Kansas State Teachers College, Pittsburg.



PAUL MIZE
Assistant Principal; B. S. , Kansas State
College, Manhattan.



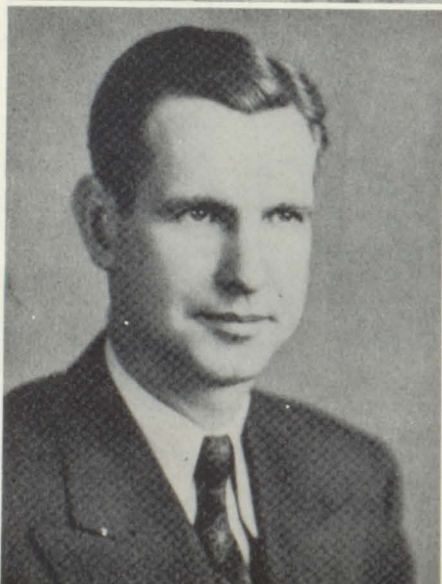
MARY KASSEL
Office Secretary

DONALD McCULLY
Director

School Board

J. H. GRIFFITH
Clerk

P. O. MELLOTT
Treasurer





Seniors



Seniors



JAMES J. WHITEHEAD
Class Sponsor
B. S., M. S., Kansas State Teachers
College, Pittsburg, Kansas.



LYSLE STILWELL
Class Sponsor
B. S., M. S., University of Kansas.



CLASS OFFICERS
Gerald Knight, President
Jack Baugh, Vice-President
Roberta Goble, Treasurer
Beverly Baum, Secretary



RONALD BAKER

Band 1, 2; Orchestra 2; Bible Club 1; Track 2, 3, 4; B-Club 2, 3, 4; Student Council 3; Pow Wow 3, 4; Honor Banquet 2, 3; Class Play 3; Annual Staff 4.

PAT BARRY

Honor Banquet 2, 3; Annual Staff 4.

JACK BAUGH

Class Vice-President 4; Class Play 4.

BEVERLY BAUM

Band 1, 2; Pep Club 1, 2, 3, 4, Vice-President 3, Secretary 4; Quill and Scroll 3, 4; Student Council 1, Pow Wow 2, 3, 4, Editor 4; Class Play 3; All-school Play 3; Mixed Chorus 1; Class President 3; Class Secretary 2, 4; D. A. R. Representative 4; Honor Banquet 1, 2, 3; Annual Staff 4; Thespians 4; Scribe 4.



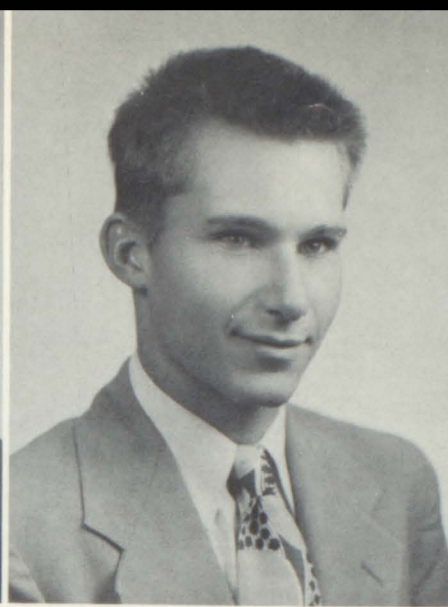
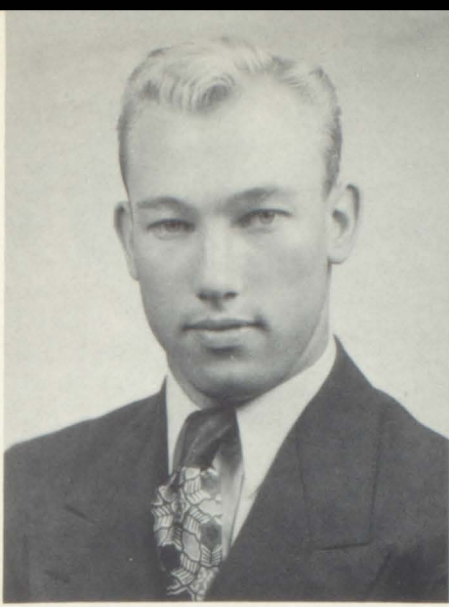
HARRY BURTON

Turner High School 1; Football 2; Class Play 4.

DOROTHY BUSHNELL

Bible Club 3; Class Play 3, 4; 1-Act Play 4; Thespians 4, Vice-President.





ROBERT CLINE

Mixed Chorus 1; B-Club 2, 3; Class Play 3, 4; Student Council 2; Class Vice-President 3; Class Treasurer 1; Basketball 1; Football 2, 3, 4; Track 1, 2, 3, 4.

TERRY COLEMAN

F. F. A. 1, 2, 3, 4, Reporter 3, President 4; Mixed Chorus 4; Class Play 3; 1-Act Play 3, 4.

KEITH DUNN

Chanute, Kansas 1, 2, 3, 4; Class Play 4.

ROSA LEE EINHELLIG

Band 1, 2; Orchestra 1; Mixed Chorus 1; Pep Club 1, 2, 3, 4; Cheerleader 3, 4; Queen Attendant 4; Class Secretary 1; Honor Banquet 1, 2, 3; Annual Staff 4.

DEAN EISMAN

Washington High School 1; Band 2, 3, 4; B-Club 3, 4, President 4; Football 3, 4; Basketball 2, 3, 4; Class Play 4.

BETTY EVERS

Austria 1, 2; Pep Club 3; Mixed Chorus 3; Pow Wow 3; Glee Club 4.





ROBERTA GOBLE

Pep Club 1, 2, 3, 4; Class Treasurer 4; Class Play 3; Mixed Chorus 3, 4; Girls' State 3; Thespians 4, Reporter 4; Annual Staff 4.

BOB HANDLEY

Track 1, 2, 3, 4; Basketball 1, 2, 3, 4; Football 1; B-Club 2, 3, 4; Mixed Chorus 3, 4; Class Play 4.

CAROLYN HANSON

Glee Club 1, 4; Student Council 2; Honor Banquet 1, 2, 3; Annual Staff 4.

MARILYN HANSON

Sextet 1; Glee Club 1, 4; Honor Banquet 1, 2, 3; Annual Staff 4.



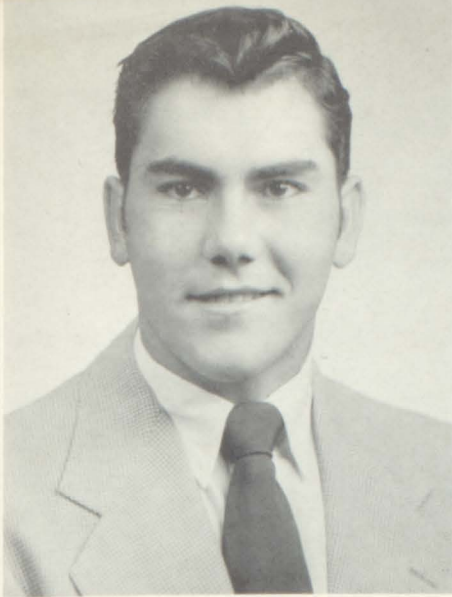
JOHN HEETER

Kansas City, Kansas 1; Football 2, 3, 4; Track 2, 3, 4; B-Club 3, 4; Mixed Chorus 4; Class Play 4.

BEVERLY HICKS

Orchestra 1; Band 1, 2; Mixed Chorus 1; Class President 1; Pep Club 1, 2, 3, 4; Honor Banquet 1, 2, 3; 1-Act Play 2, 3; Glee Club 3; State Dramatic Contest 3; Girls' State 3; Pow Wow 3, 4; Class Play 3, 4; Thespians 4, Secretary 4; Editor Totem Pole 4.





VIRGIL KELSAY

Turner 1; Football 2, 3, 4; B-Club 4; Band 4.

ANN KLAMET

Queen's Attendant 1; Popularity Queen 4; Pep Club 1, 2, 3;
Mixed Chorus 3.

DARRELL KNIGHT

Football 1, 4; Basketball 1, 2, 3; Track 1, 2, 3, 4; B-Club
2, 3, 4; Annual Staff 4.

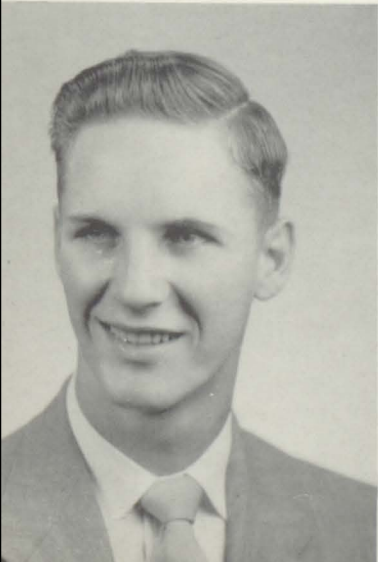
GERALD KNIGHT

Track 1, 2, 3, 4; B-Club 2, 3, 4; Mixed Chorus 1, 3; Popu-
larity Candidate 3; Class Play 3; Class Treasurer 2; Class
President 4; Student Council 3.



BUD LYNN

Band 1, 2, 3, 4; Orchestra 1; Mixed
Chorus 1; Football 1, 2, 3, 4, Captain 4;
Basketball 1, 3, 4; Track 3, 4; B-Club
2, 3, 4; EKL All-Star 3, 4; Popularity
Candidate 1, 2; Class Vice-President
2; Boys' State 3; Student Council
President 4; Annual Staff 4.



DELBERT MANN

Mixed Chorus 1; F. F. A. 1, 2; Football
1, 3, 4; Track 3; Boys' State 3; School
Play 3; Class Play 3, 4; B-Club 4;
Annual Staff 4.



GAYNELLE MARTIN

Bible Club 3; Class Play 3; Pep Club 3, 4.

JOHN MATTHEWS

Turner 1; F. F. A. 3, 4, Treasurer 4.

HOWARD MILLER

F. F. A. 1; Track 2, 3, 4; Football 4.

DON McCULLY

Basketball 1, 2, 3, 4; Track 1, 3, 4; B-Club 1, 2, 3, 4, Secretary-Treasurer 2, 3, Secretary 4; Student Council 1; Class President 2; Mixed Chorus 3; Popularity King 4; Class Play 4.



SALLY PEOPLES

Mixed Chorus 1; Pep Club 1, 2, 3; Class Play 3; Glee Club 4.

DELORES SAVAGE

Mixed Chorus 1; Orchestra 1; Band 1, 2, 3; Pep Club 1, 2, 3, 4; Cheerleader 2, 3, 4; Class Treasurer 3; Popularity Candidate 3; Class Play 3, 4; Pow Wow 3, 4; Kansan Correspondent 4; Quill and Scroll 4; Thespians 4; Student Council 4, Secretary 4; Annual Staff 4.





JESSIE SMITH

Bible Club 1, 2, 3, 4, Secretary 3, President 4; Mixed Chorus 1, 3; Honor Banquet 3; Glee Club 4; Annual Staff 4.

NANCY SMITH

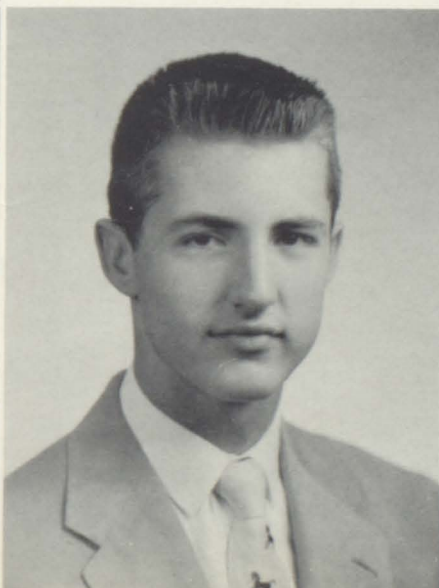
Pep Club 1, 2, 3, 4, President 4; Class Play 3; Honor Banquet 3; Annual Staff 4.

WALTER SOUDERS

Pleasanton, Kansas 1; Bible Club 2.

MARTHA STARK

Pep Club 1; Class Vice-President 1; Honor Banquet 1, 2, 3; Class Secretary 3; Band 3, 4.

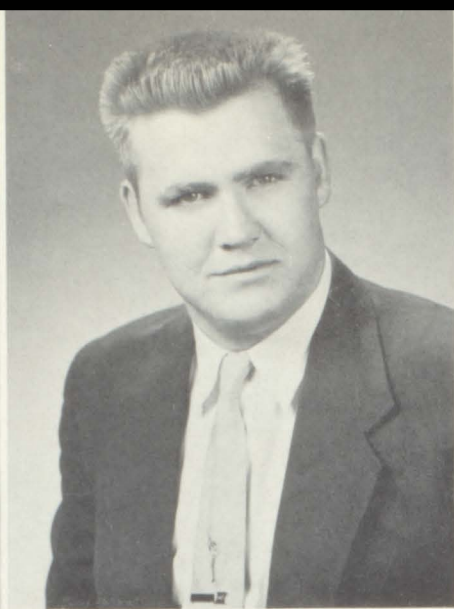


JACK STEELE

F. F. A. 1, 2, 3, 4, Parliamentarian 4.

RONNIE TATE

Page City 1; Basketball 2, 3, 4; Football 2, 3, 4; Track 2, 3, 4; B-Club 2, 3, 4, Vice-President 4; Boys' State 3; Annual Staff 4; Class Play 4.



NITA LEE TROUTNER
Pep Club 1, 2, 3; Mixed Chorus 3.

DEAN WAGNER
Bettendorf, Iowa 1, 2, 3, 4.

ARDUS ANN WHITE
Pep Club 1, 2, 3, 4, Treasurer 4; Cheerleader 4; Mixed
Chorus 3; Queen's Attendant 3; Annual Staff 4.

CAROLYN WILCOX
Lawrence, Kansas 1; Bible Club 2, 3; Mixed Chorus 2, 3;
Honor Banquet 2, 3, 4; 1-Act Play 2; All-School Play 3;
Class Play 3, 4; Thespians 4, President 4; Student Council 3, Treasurer 3; Glee Club 4; Annual Staff 4.



DALE WILLIAMS

Football 1, 2, 3, 4, EKL All-Star 3, 4,
Area All-Star 4; Track 1, 2, 3, 4; Bas-
ketball 3, Student Manager 1, 2; B-
Club 2, 3, 4; Mixed Chorus 1, 3, 4; All-
School Play 3; Thespians 4, Treasurer
4; Student Council 4; Pow Wow 4;
Quill and Scroll 4; Annual Staff 4.

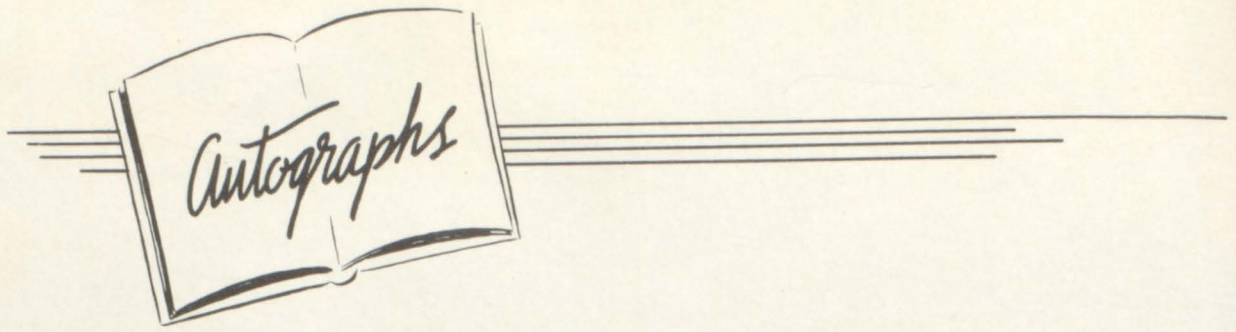
WILEY WILLIAMS

Lawrence, Kansas 1; Washington High
School 2; Track 2, 3, 4; Basketball 3;
Football 3, 4, EKL All-Star 3; B-Club
2, 3; Homecoming King 4; Mixed
Chorus 4.





Underclassmen



Autographs

Juniors



EDWIN A. GORSKY
Class Sponsor
A. B. , Emporia State Teachers
College, Emporia, Kansas.



ROBERTA POTTER
Class Sponsor
B. S. , Kansas State College, Manhattan,
Kansas.



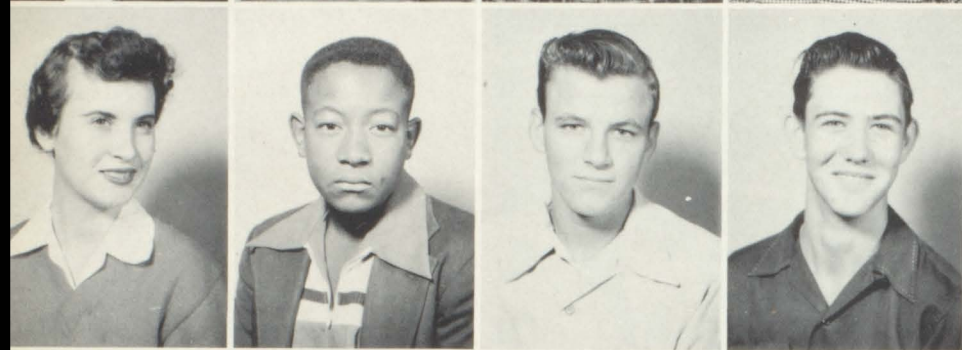
GEORGE PFLAUMER
Class Sponsor
B. S. , Northwest State Teachers
College, Maryville, Missouri.



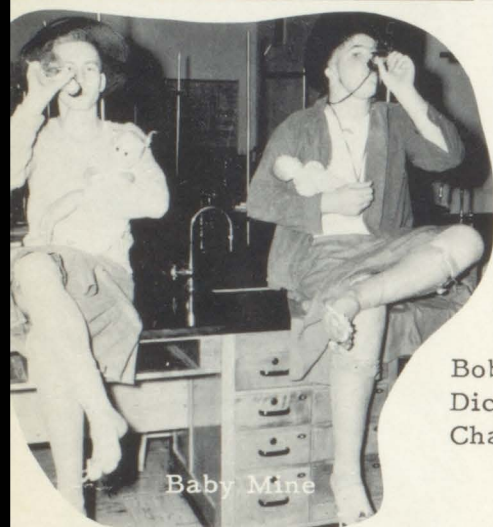
CLASS OFFICERS
Bob Laing, President
Larry North, Vice-President
Betty Jackson, Secretary
Carolyn Hill, Treasurer



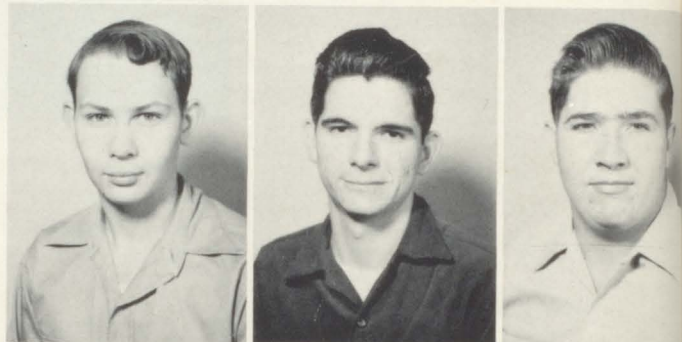
Janet Barnes
 Pat Blecher
 Georgia Bond (no picture)
 Bob Braswell (no picture)
 Ronald Brown
 Donald Brunson



Jo Anne Clapper
 James Dangerfield
 Eddie Davis
 Michael Deaner
 Elbert Delana (no picture)



Bob DeMaranville
 Dick Deonier
 Charles Dunivan



Frank Einhellig
 Bernard Everhart
 Bennie Farnsworth



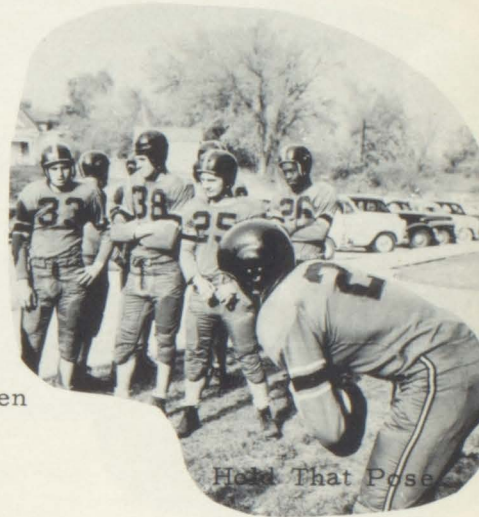
Ed Forbach
 Charles Gibson
 Joe Gomez
 Harry Grider



Leonard Harris
 Mary Hayden
 John Hernandez
 Margaret Hewitt



Carolyn Hill
 Pat Hoffine (no picture)
 Sandra Issett
 Betty Jackson
 Raymond Kennett



Frances Kitchen
 Corann Knipp
 Pete Knipp

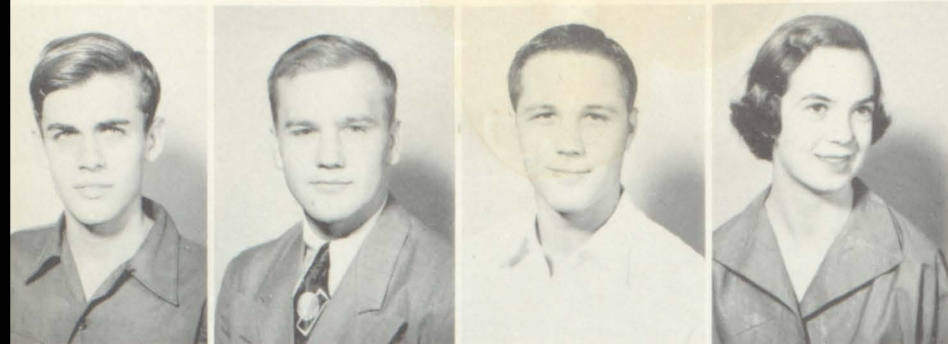


Virginia Kueker
 Bob Laing
 Esther Malone



James McCleary
 Charles McCord
 Arden McLaughlin
 John Mikesich





Claude Miller
James Miller
Charles Mobley
Gail Moffit



Larry North
John Pembleton
Bob Pickett
Shirley Porth



Nancy Ridens
Helen Sedgwick
Don Shanafelt



Marguerite Toot
Clyde Umbenhowe
Melvin Walker



Barbara Watson
Carolyn Wiggins
Marna Wilkins
Myrna Wilkins



Sophomores



EDITH SALTER
Class Sponsor
A. B. , Whitworth College, Spokane, Wash-
ington.



ROBERT E. HAWKINS
Class Sponsor
B. S. , Kansas State Teachers College, Em-
poria.



CLASS OFFICERS
Sheila Troutner, Secretary
Arlene Wendt, Vice President
Dixie Stanley, Treasurer.
Sue Hininger, President



Judy Ballentine
Loretta Ballentine
Everett Bowers
Bill Budy



Sandra Burnam
Marjorie Bushnell
J. L. Callier
Miles Coiner



Lola Mae Crosby
Lucille Crosby
Pat Dale



Charles Davis
Ramsey Davis
Tyree Davis
Ronnie Dickson



Wanda Dunham
Wanda Dunkin
Bert Evans
Janet Fenton



Carl Foster
 Paul Garstecki
 Velda Gilliam
 Fred Goble



Sue Hinger
 Gordon Hofstra
 Norma Howard
 Lawrence Jackson



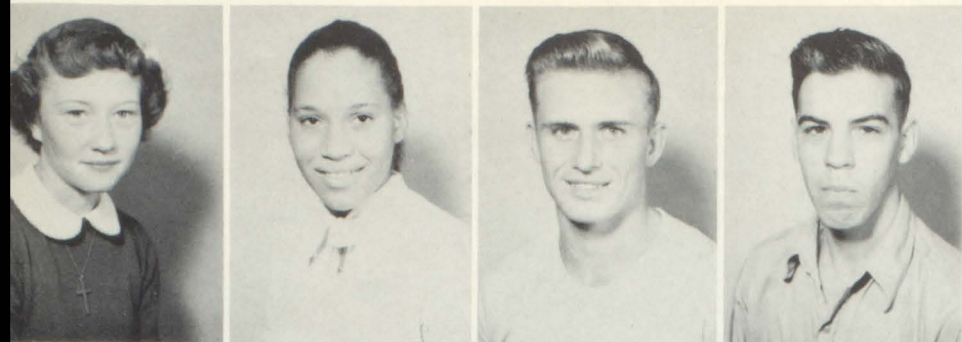
George Johnson
 Sherris Kahle
 Jack Killingsworth
 (no picture)
 Jerome Knight



John Knight
 Ginger Lane
 John Langford
 (no picture)
 Jim Leake



Tom Lindsay
 Jane Lingo
 Sharon Lingo
 Connie Long



Betty McCord
 Luella McDonald
 Lloyd McIntyre
 Jerry McKinney
 (no picture)
 Milford Owens



June Pass
 (no picture)
 Ellenor Rees
 Carol Reynolds
 Carol Roark
 Louann Ruby



John Santacruz
 Martha Sowers
 Dixie Stanley



Elbert Surritte
 Martha Theno
 Sheila Troutner
 Evelyn Vaughn



Martha Walker
 Bonnie Washburn
 Wanda Wasson
 Arlene Wendt



Freshmen



DORIS STITH
Class Sponsor
A. B., Nebraska State Teachers
College, Kearney.



KENNETH TEWELL
Class Sponsor
B. S., Kansas State Teachers College, Em-
poria.



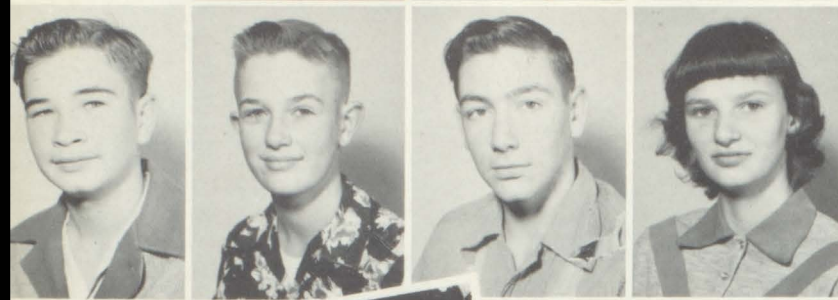
BERNICE SETTLES
Class Sponsor
A. B., Ottawa University.



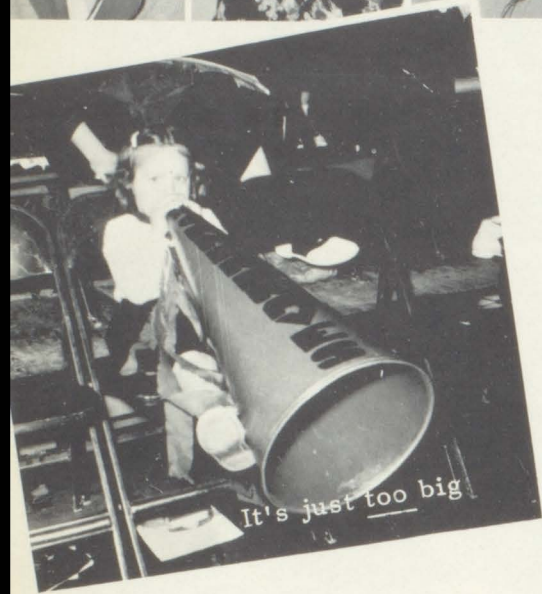
CLASS OFFICERS
Walter Brauer, Treasurer
Phyllis Klamm, Vice President
Alice Matthews, Secretary
John Stark, President



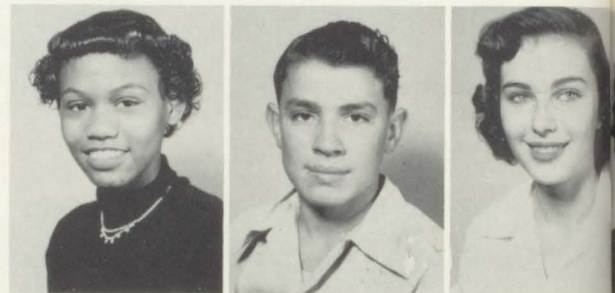
Jim Acock
 Pat Akers
 Charles Anderson
 Earl Arnold
 Barbara Ballentine



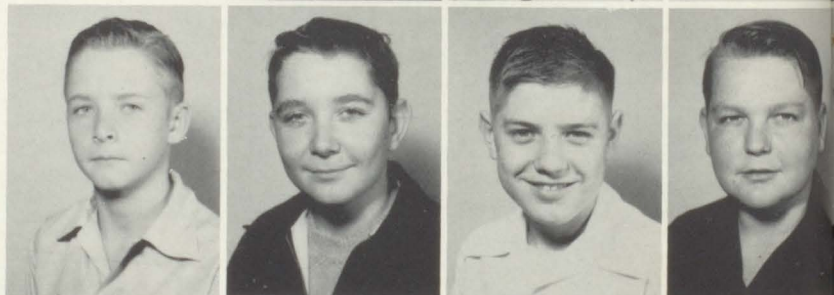
Eddie Ballentine
 Larry Barnes
 Malcolm Beaty
 Jeanette Bever



Ardella Bolton
 Elmer Bond
 Martha Branson



Walter Brauer
 Paul Bush
 Larry Bushnell
 Glen Clark



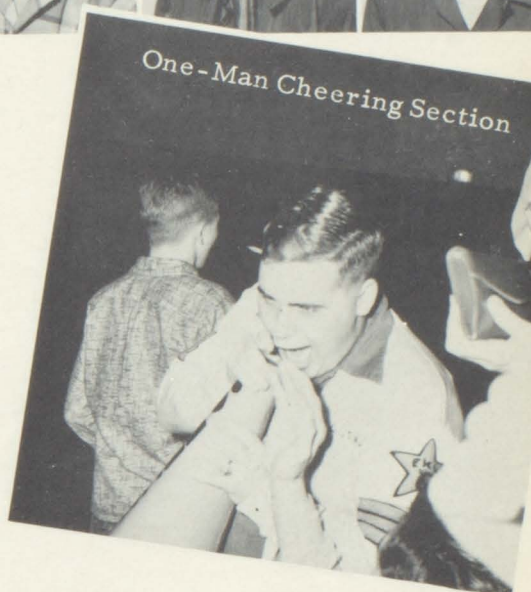
Eugene Cline
 Mary Lou
 Cunningham
 Jo Ann
 Dangerfield
 Charles
 DeMaranville
 Junior Dunivan



Mike Einhellig
 Joyce Ewing
 Alvin Faunce
 Dick Fealey
 Susan Fleming



Jerald Fletcher
 Jerry Gebhardt
 Janice Harkness
 John Harrington



June Hewitt
 Marcia Hill
 Pauline Honeywell
 Juanita Hurd



Lavada Hylton
 Ronald Issett
 Sam Johnson
 Lela Mae Jordan



Margaret Kelly
 Tom Kelly
 Connie Klahr
 Phillis Klamm
 Densie Langford





Barbara Lattin
 Bob Leake
 Carroll Martin
 James Martin
 Alice Matthews



Roy McCallop
 Lester McCleary
 David Miller
 Don Mills



Junior Mullins
 Paul Neas
 Bob Nelson
 (no picture)
 Marcia North
 Ray Owens



Danny Pardew
 Carol Sue Pfeffer
 Shirley Pickett
 Sidney Platt



Marvin Pollock
 John Reynolds
 Sally Reynolds
 Bob Rhodes
 Bill Schultz



Richard Shaver
 Pat Sheley
 George Smith
 Don Souders
 Edmond Sparks



John Stark
 Fred Theden
 Betty Thomas
 Jay Tomlin



Naomi Toot
 Martha Travis
 Alfred Van Buskerk
 (no picture)
 Janette Vogan
 Ralph Von Friedly

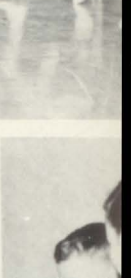


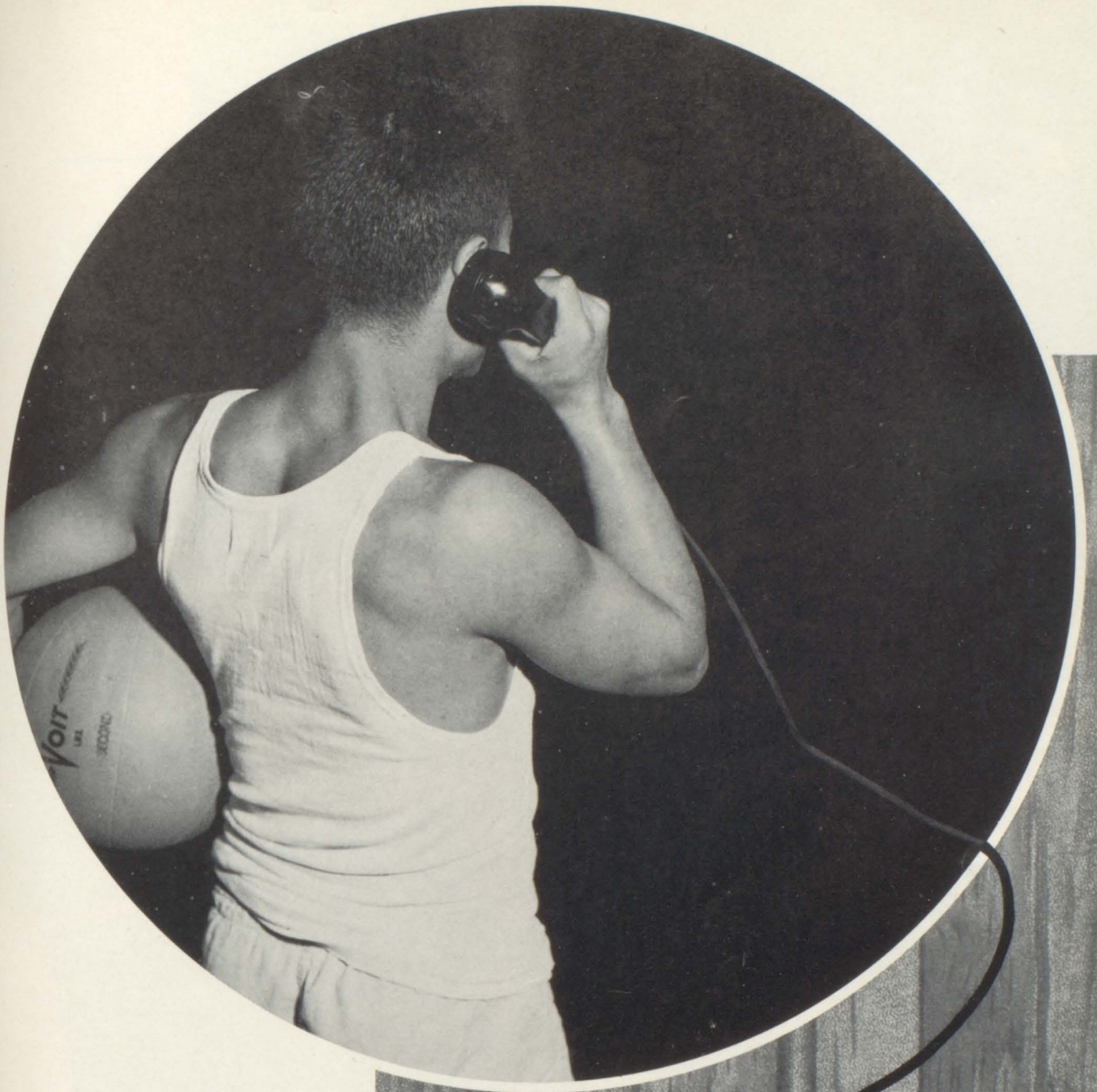
Ronnie Watkins
 Darlene Wilcox
 Alice Wilson
 Bessie Wilson



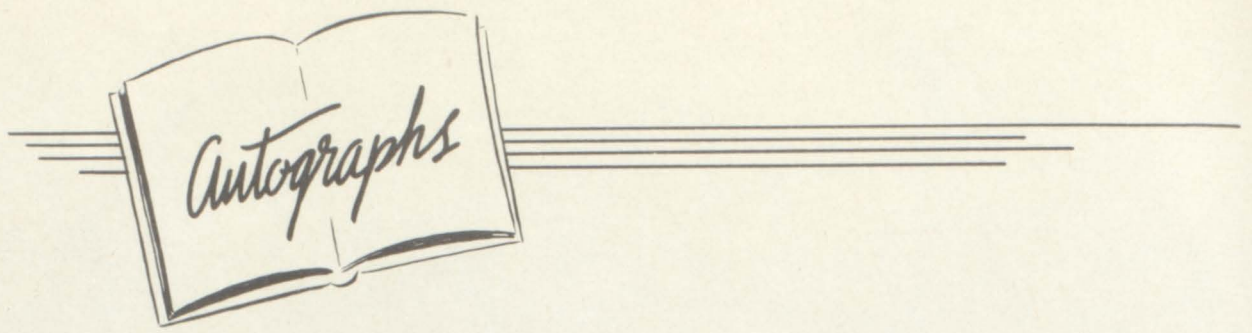
Carolyn Woolf
 Dorothy Woolf
 Jeanne Wright
 David Yount
 Evelyn Zerbest

Snapshots





Sports

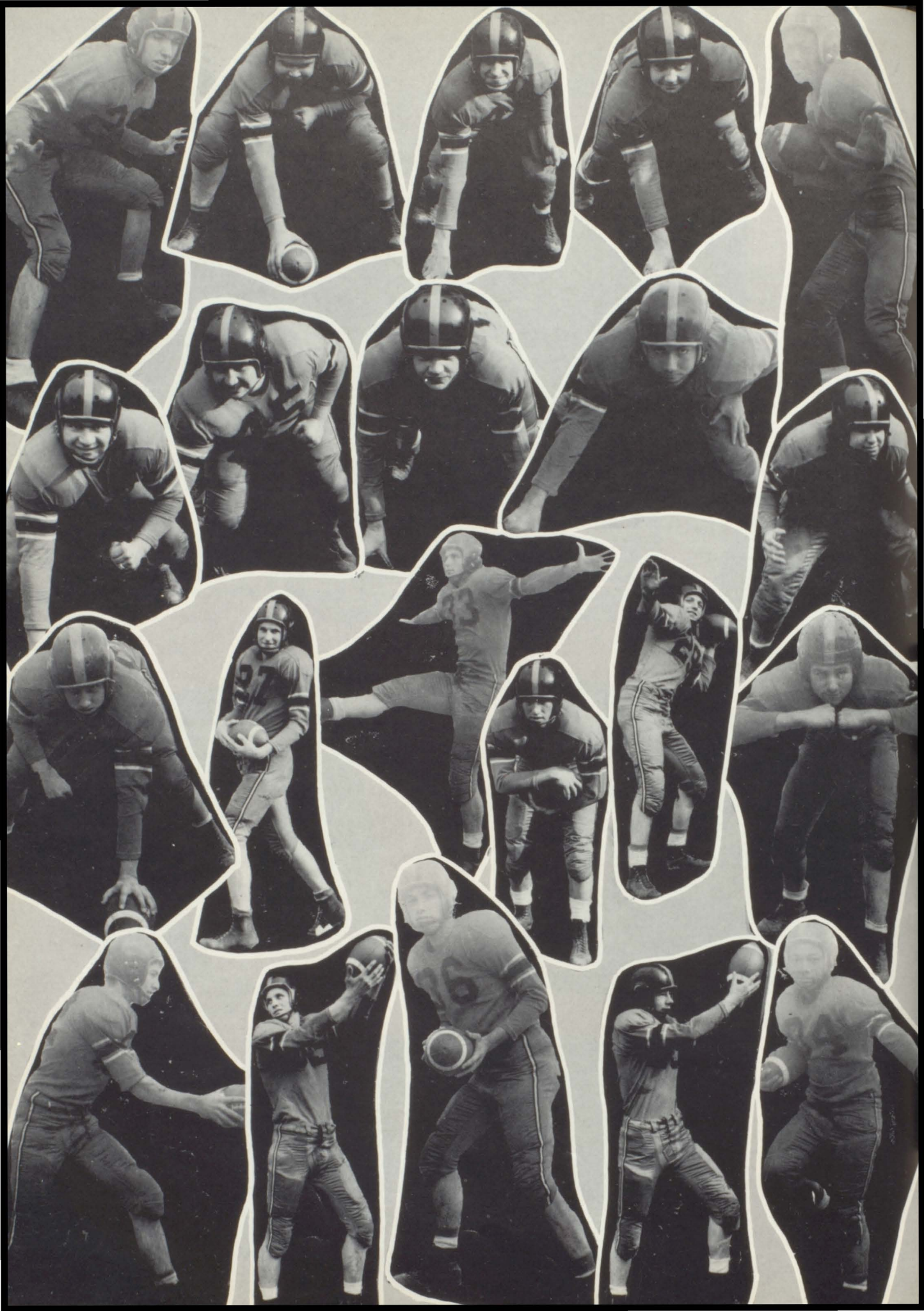




FIRST ROW: H. Miller, D. Williams, J. Mikesich, B. Laing, J. Miller, J. Heeter, B. Cline, R. Tate, J. Hernandez. SECOND ROW: L. McIntyre, W. Williams, D. Knight, V. Kelsay, D. Eisman, B. Lynn, P. Garstecki. THIRD ROW: Coach Snyder, C. Dunnivan, D. Mann, A. McLaughlain, J. L. Collier, R. Shaver, J. Fritz, Coach Gorsky. FOURTH ROW: G. Fletcher, W. Langford, C. Gibson, J. Acock, J. Mullins, B. Budy. FIFTH ROW: L. North, E. Bowers, T. Davis, F. Goble, S. Platt, M. Coiner, J. Steele.

Football





FRESHMAN
FOOTBALL

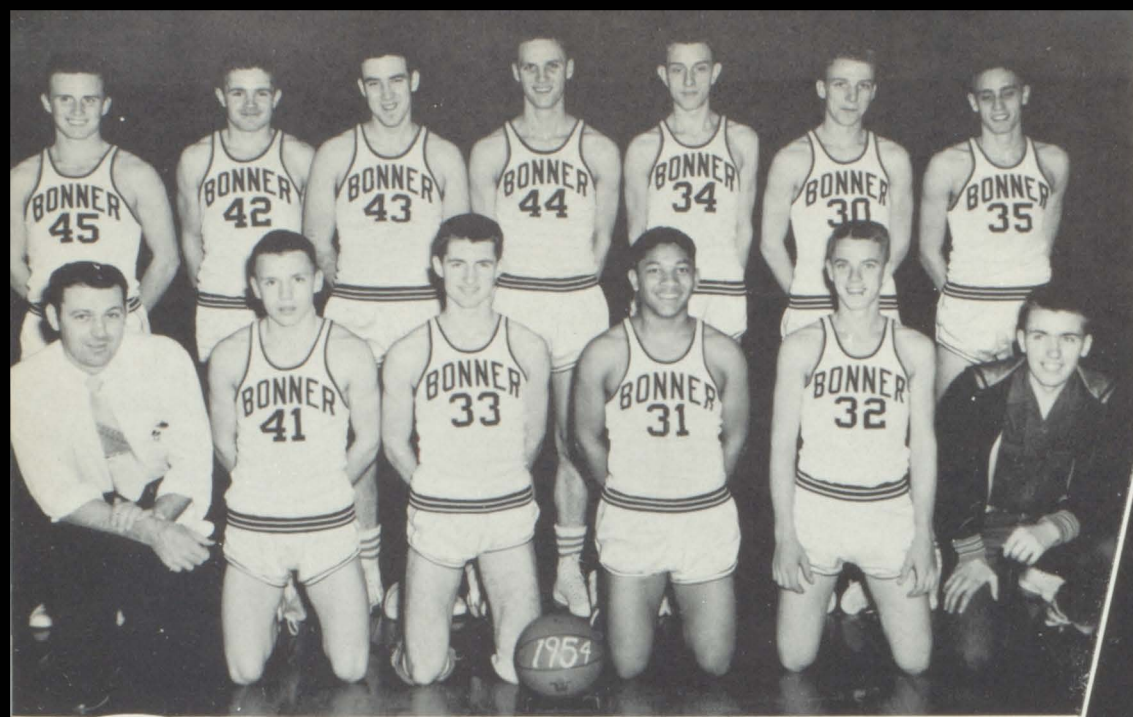


FIRST ROW: S. Platt, E. Moore, G. Smith, W. Brauer, J. Gebhardt, E. Arnold, C. Martin, L. McCleary. SECOND ROW: D. Fealy, B. Rhodes, D. Yount, R. Shaver, B. Leake, R. Owens, J. Stark. THIRD ROW: D. McNichols, J. Fritz, Mr. Tewell, G. Fletcher, J. Mullins.



FIRST ROW: L. McCleary, F. Theden, B. Nelson, J. Harrington, B. Leake. SECOND ROW: E. Cline, J. Stark, B. Rhodes, R. Owens, P. Neas.

FRESHMAN
BASKETBALL



Ronnie Tate

FIRST ROW: Coach Gorsky, B. Budy, R. Tate, J. Hernandez, R. Brown, Student Manager-D. Knight. SECOND ROW: L. McIntyre, J. Mikesich, H. Grider, B. Lynn, B. Handley, D. Eisman, D. McCully.

Basket ball



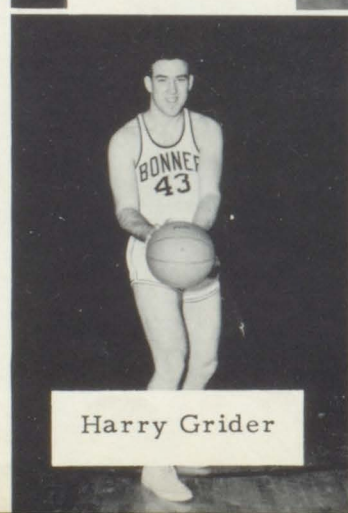
Buddy Lynn



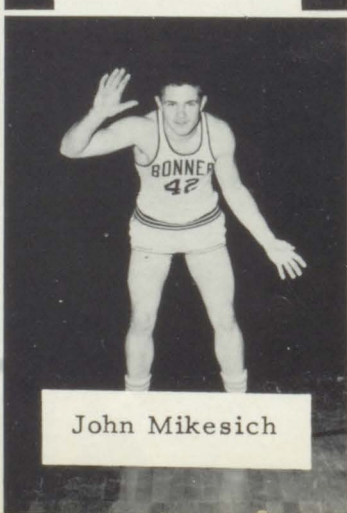
Don McCully



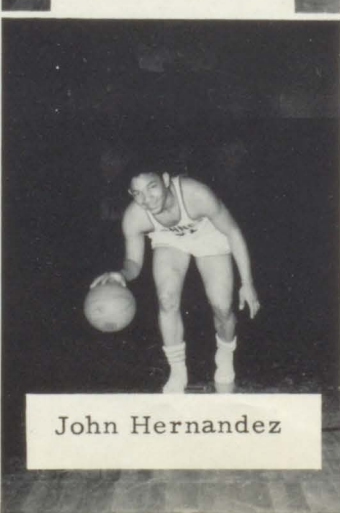
Bob Handley



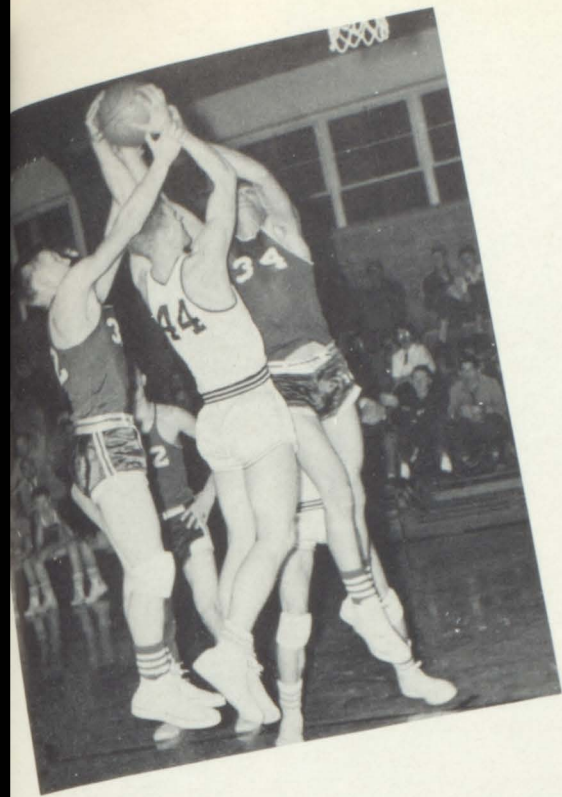
Harry Grider



John Mikesich

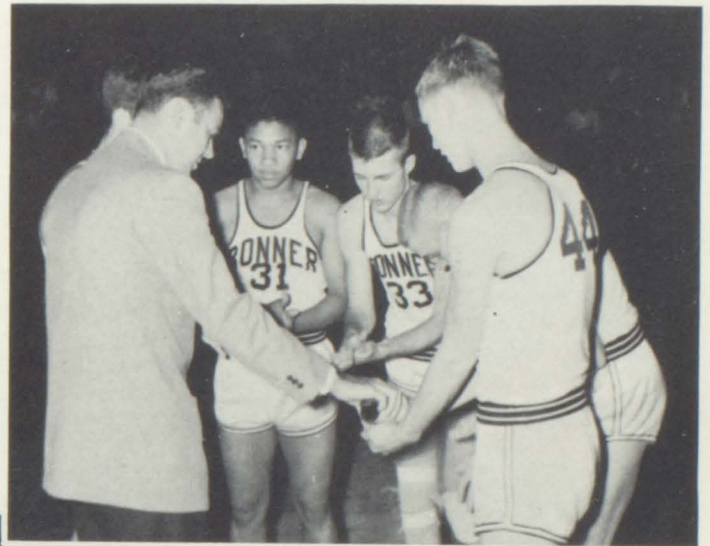


John Hernandez

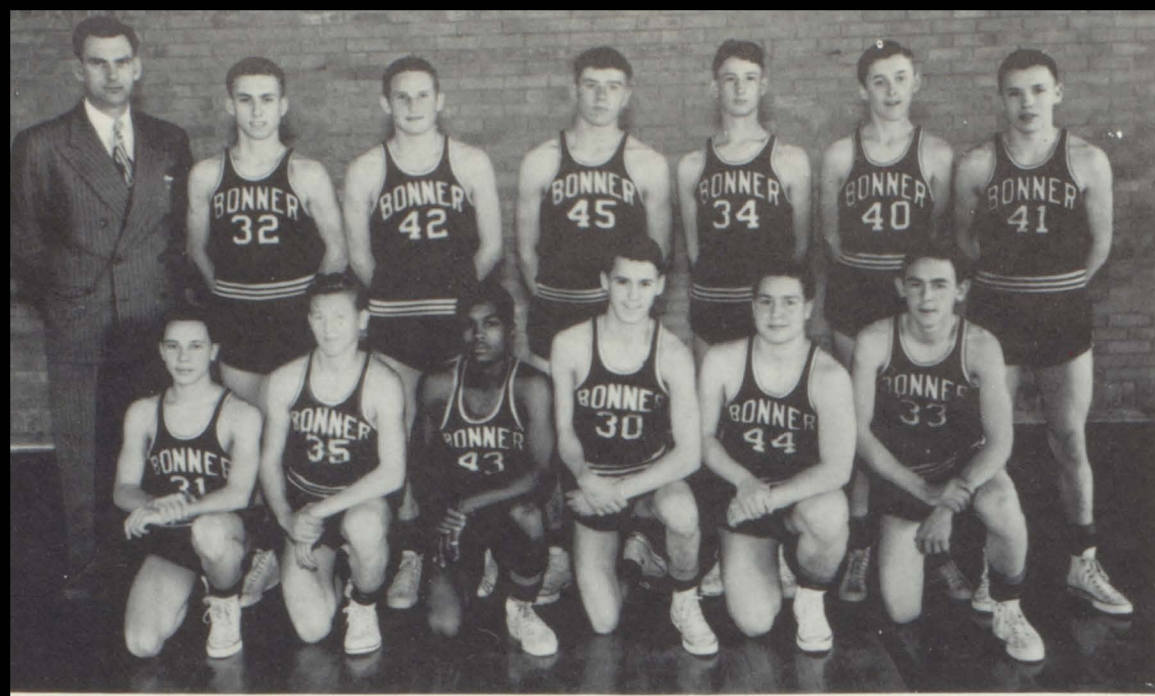


Under the guidance of Coach Ed Gorsky, the Bonner Braves enjoyed a successful season winding up with a 14 won, 10 lost and a 6 won, 6 lost record for league play. This gave them fourth place in the league. The braves had the distinction of being the only team in the league to beat the league titilists, the Olathe Eagles.

The Bonner Braves added one trophy to their collection, a third place in the sub-regionals.



"B"
T
E
A
M



FIRST ROW: L. North, E. Bowers, J. L. Collier, R. Dickson, R. Davis, F. Goble. SECOND ROW: Mr. Snyder, B. Laing, W. Langford, P. Garstecki, F. Einhellig, G. Hofstra, B. Budy.

Track



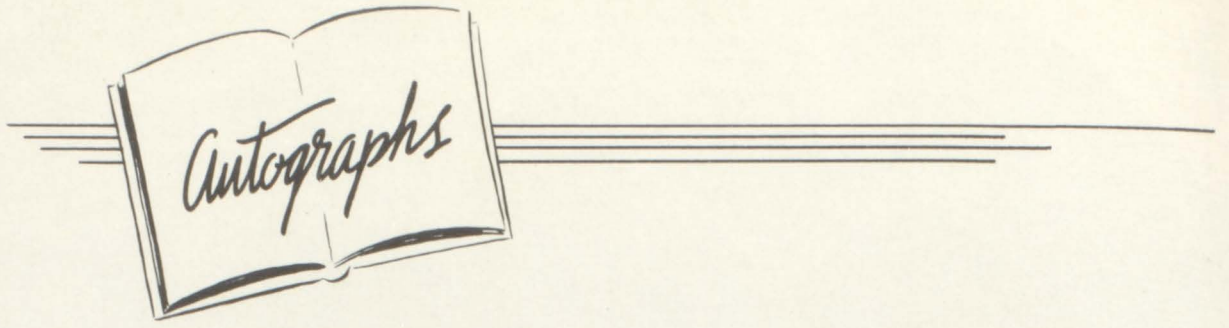
RELAY TEAM: D. McCully, J. Mikesich, B. Cline, R. Tate.



FIRST ROW: J. Mulline, D. Yount, J. Gebhardt, J. L. Collier, B. Budy, C. Martin, J. Reynolds, R. Davis, L. North. SECOND ROW: J. Stark, B. Cline, B. Laing, S. Johnson, R. Tate, L. McIntyre, T. Davis, E. Bowers, D. Deonier, Mr. Snyder. THIRD ROW: W. Williams, D. McCully, D. Fealy, D. Knight, J. Mikesich, G. Fletcher, B. Braswell, B. Handley, B. Lynn.



Organizations

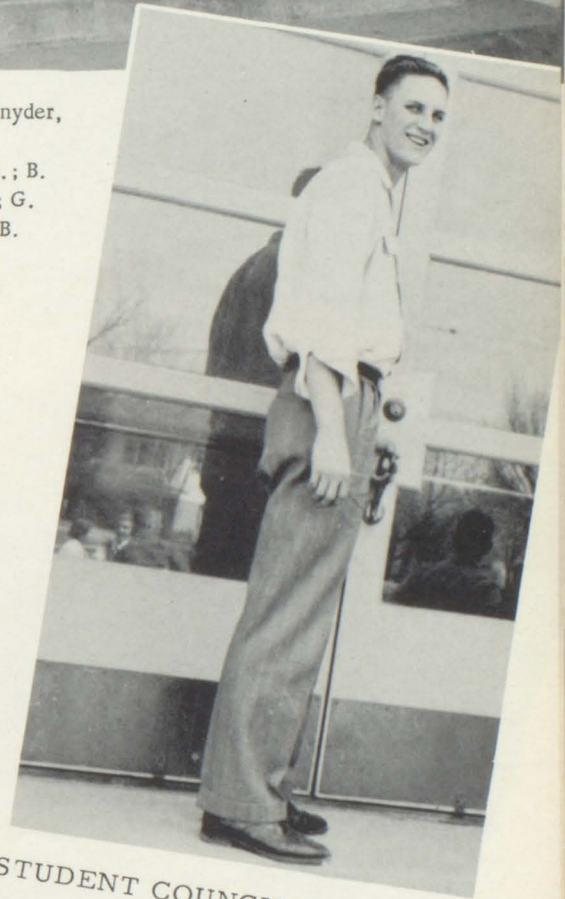


STUDENT COUNCIL



BACK ROW: B. Lynn, Senior; J. Stark, Fresh.; Mr. Snyder, Sponsor; D. Williams, Senior; S. Burnam, Soph.; M. Coiner, Soph.; P. Sheley, Fresh.; S. Hininger, Soph.; B. Watson, Junior; R. Laing, Junior; D. Deonier, Junior; G. Knight, Senior; J. Fritz, Fresh.; D. Savage, Senior; B. Rhodes (NO PICTURE) Fresh.

The Student Council of 1954 promoted entertainment for the student body by adding a new juke box and a Bar-B-Dog machine to be used at the mixers which they sponsored. To add to the comfort of students they bought a water cooler and replaced the motor in the coke machine. Their money was earned by selling popcorn at the games.

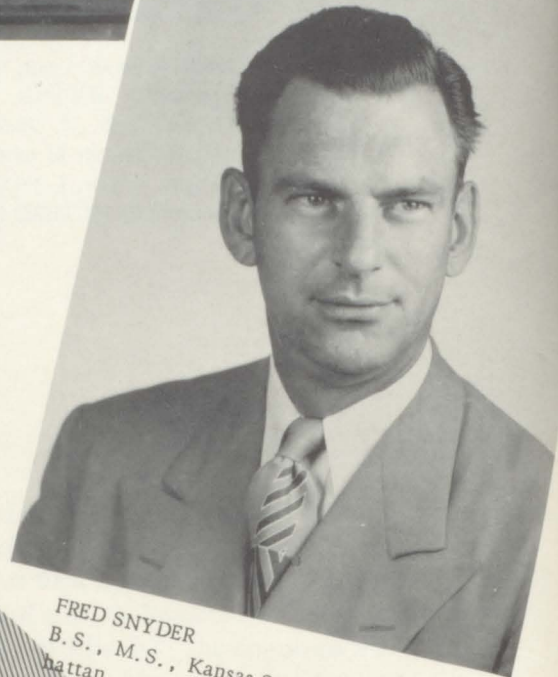


STUDENT COUNCIL PRESIDENT
Buddy Lynn

"B"
C
L
U
B



FIRST ROW: W. Williams, J. Heerer, B. Lynn, D. Williams, D. Eisman, President, B. Cline, R. Tate. SECOND ROW: D. McCully, B. Handley, D. Knight, J. Miller, R. Baker, J. L. Collier, J. Hernandez. THIRD ROW: L. McIntyre, G. Krigar, J. Mikesich, W. Langford, B. Laing, A. McLaughlin, P. Garstecki. FOURTH ROW: D. Mann, V. Kelsay, C. Dunivan, C. Gibson, H. Grider.



FRED SNYDER
B. S., M. S., Kansas State College, Manhattan.

P
E
P
C
L
U
B



FIRST ROW: B. Lattin, S. Porth, R. Goble, S. Issett, J. Hurd, A. Matthews, M. Hill, B. Watson, M. North. SECOND ROW: B. Baum, P. Hoffine, B. Ballentine, P. Honeywell, J. Clapper, P. Klamm, H. Sedgwick, N. Smith, President. THIRD ROW: V. Gilliam, E. Rees, A. Wendt, P. Blecher, S. Issett, P. Sheley, G. Lane, M. Sowers, J. Ewing. FOURTH ROW: N. Howard, C. Reynolds, J. Pass, M. Theno, C. Long, S. Troutner, D. Stanley, C. Roark, M. Cunningham.



ELSABETH SPALSBURY
B. S., Kansas State Teachers College,
Emporia.



CHEERLEADERS: Rosa Lee, Ardie, Dee, Sharon, Carolyn



Mixed Chorus

FIRST ROW: J. Vogan, J. Harkness, B. McCord, G. Lane, V. Gilliam, R. Goble, J. Burris, W. Wasson, C. Klahr, C. Woolf, C. Hanson, SECOND ROW: M. Kelly, A. Farris, A. Bolton, B. Nelson, J. McCleary, J. Miller, R. Carl, R. Davis, B. Thompson. THIRD ROW: M. Walker, T. Coleman, D. Williams, W. Williams, J. Heeter, B. Handley, B. Schultz.



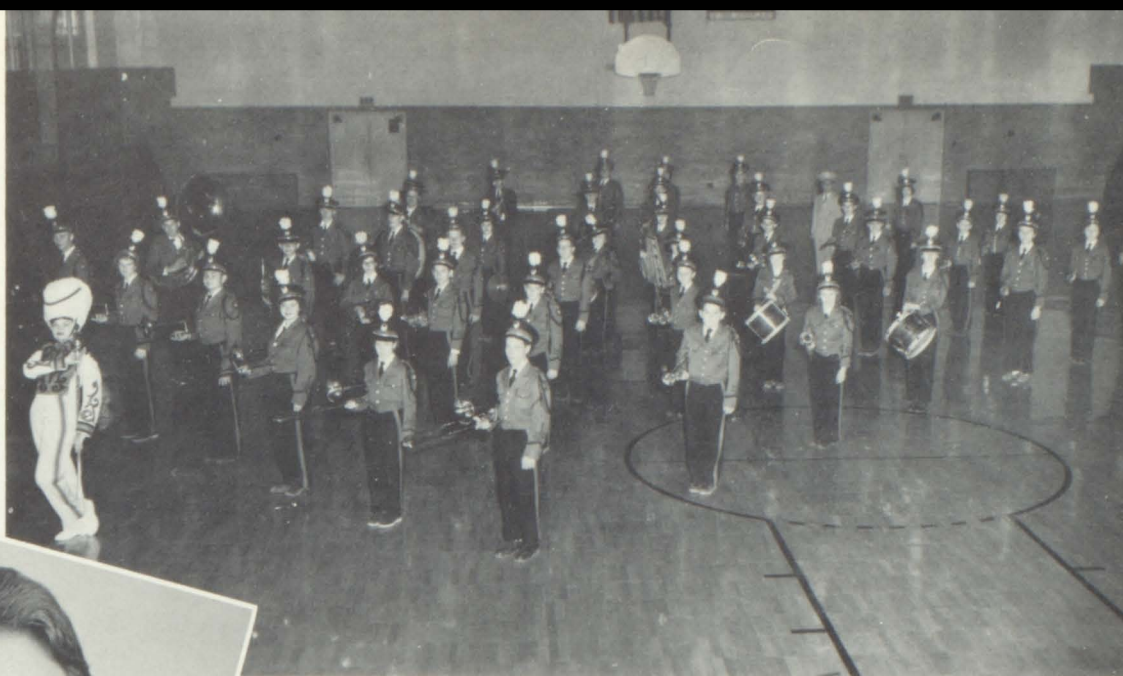
ACCOMPANISTS:
Martha, Jeanene
Sheila

G L E E C L U B

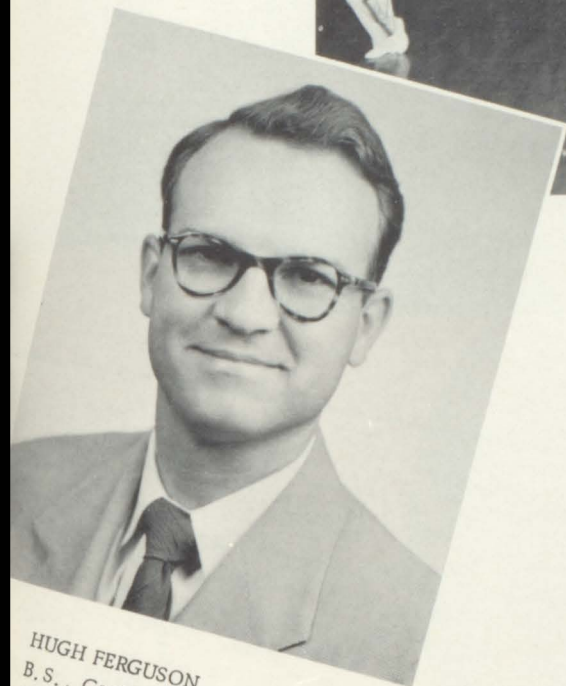


FIRST ROW: C. Layman, M. Garr, P. Blecher, M. Hill, M. Walker, M. Hanson. SECOND ROW: P. Akers, S. Troutner, S. Peoples, J. Smith, C. Wilcox, J. Wright, M. Hewitt.

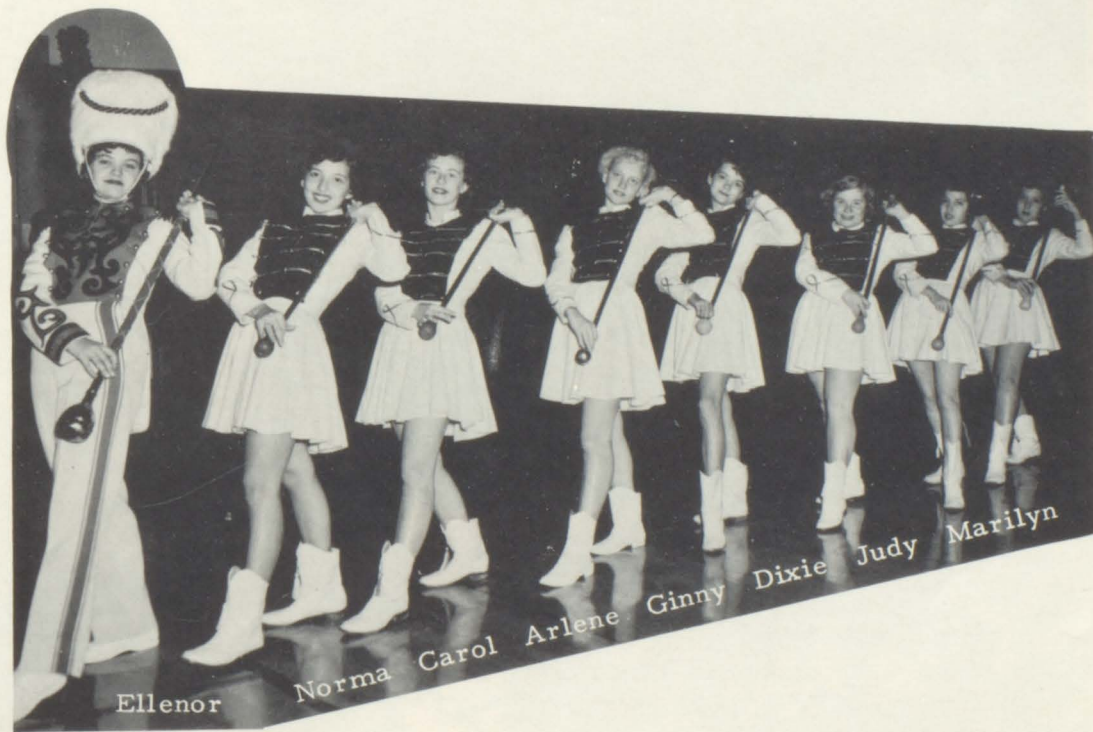
B A N D



Drum Majorette--E. Rees. FIRST ROW: B. Lynn, V. Kueker, F. Emery, P. Klamm, B. Scott, L. North. SECOND ROW: D. Fealey, D. Powell, B. Lawrence, D. Taylor, L. Platt, L. Forbach. THIRD ROW: D. Eisman, B. Rhodes, B. Saunders, R. Von Freidly, E. Lynn, K. Keen. FOURTH ROW: A. McLaughlin, R. Horn, S. Saunders, C. Bundy, A. Garr, J. Reynolds. FIFTH ROW: P. Neas, J. Harrington, S. Lingo, D. Pague, J. Leach, M. Stark, V. Kelsay, B. Lattin, C. Ruby, B. Frye, E. Roberts, J. Wright, J. Ewing, D. Yount, Mr. Ferguson, Director, G. Moffit, S. Coleman, M. Branson.



HUGH FERGUSON
B. S., Central Missouri
State College; M. S.,
Kansas University.



Ellenor Norma Carol Arlene Ginny Dixie Judy Marilyn



AROUND TABLE: B. Baum, Editor, B. Hicks, S. Troutner, N. Howard, D. Williams, S. Kahle, D. Deonier, A. McLaughlin, S. Hininger. STANDING: D. Savage, R. Baker, R. Davis, Mrs. Stith.

THE POW WOMAN SPOTLIGHT

Published each Friday except holidays prepared by the Journalism Class and the Secretarial Training and Typing 11 classes at the Bonner Springs Rural High School.

- Editor.....Beverly Baum
- Reporters--Dick Deonier, Arden McLaughlin
- Norma Howard, Ramsey Davis
- Features--Delores Savage, Sherris Kahle,
- Sheila Kay Troutner
- Sports--Beverly Hicks, Ronnie Baker, Dale Williams
- Circulation.....Sue Hininger
- Stencils--Ronnie Baker, Anne Klamet, Sally Peoples, and Carolyn Wilcox
- Faculty Sponsor.....Doris Stith
- Faculty Sponsor.....Lysle Stilwell



STANDING: B. Hicks, R. Baker, D. Deonier, D. Williams, D. Savage. SEATED: B. Baum.

THE LAST MONTH

As the days keep going by and the number of days left to come to school gets fewer and fewer, our minds seem to wander away from our studies. We get to thinking about going swimming or how nice it is to stay in bed as late as we want. When we day dream like this we don't hear word our teachers say.

There is still a lot left for us to learn in the remaining pages of our books and our teachers still have a lot to teach us so we should set our minds to studying now; then after the last day of school we will be free to do all that we are dreaming about.



Business Manager, D. Williams; Staff, D. Savage, and R. Baker.



Feature Editor, B. Baum; Staff, E. Cline, M. Hanson; Photography, R. Goble, D. Mann.

T
O
T
E
M



Editor, Beverly Hicks; Asst. Editor, Carolyn Wilcox; Sponsor, Miss Stilwell.

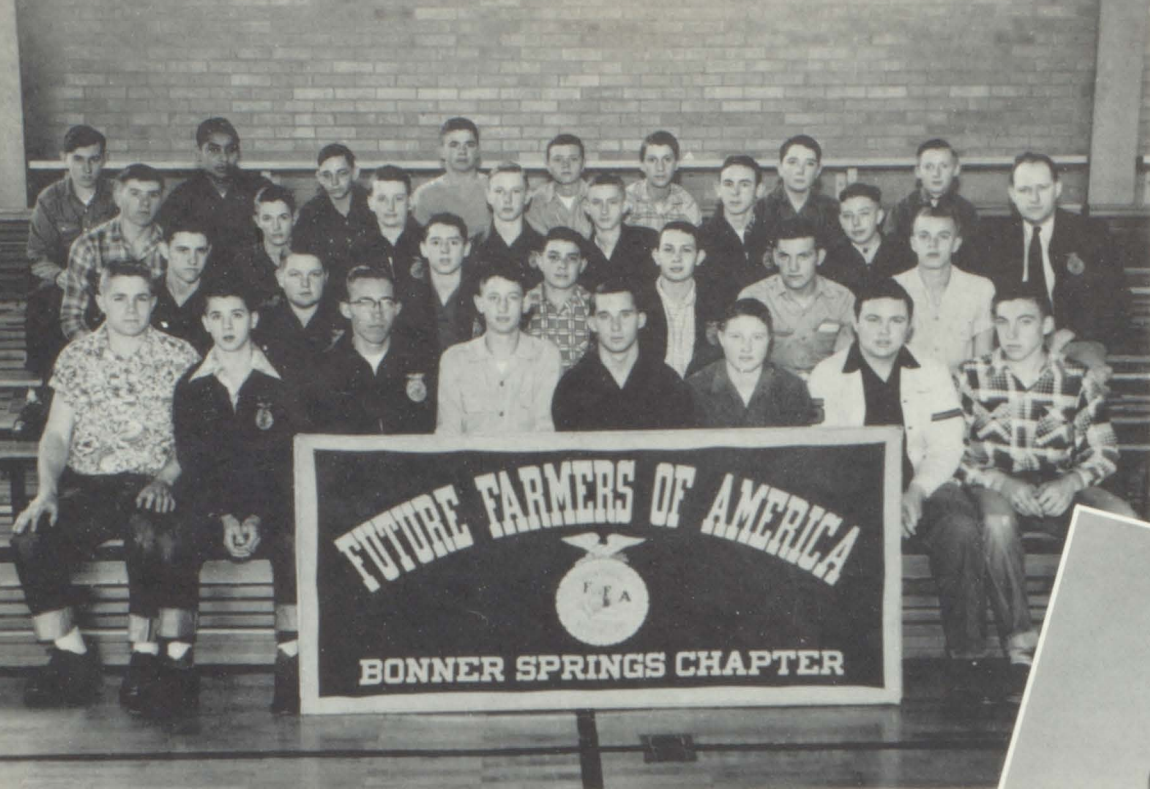
P
O
L
E



Underclassmen, D. Knight, P. Barry; Administration, D. Bushnell; Seniors, C. Hanson.



Sports, B. Lynn, R. Tate; Typists, J. Smith, N. Smith; Organizations, M. Emmelrig, A. White.



FIRST ROW: J. Mikesich, B. Everhart, J. Matthews, F. Einhellig, T. Coleman-President, P. Knipp, A. McLaughlin, J. Steele, B. DeMaranville, C. Umbenhower, R. Brown, THIRD ROW: P. Garstecki, L. Barnes, T. Kelly, R. Watkins, R. Issett, F. Goble, G. Johnson, Mr. Van Petten-Sponsor, FOURTH ROW: B. Schultz, J. Gomez, L. Jackson, C. De Maranville, M. Einhellig, D. Souders, P. Bush, A. Faunce.



Vocational Agriculture Instructor
MR. VAN PETTEN
B. S., Kansas State College, Manhattan.



OFFICERS: A. McLaughlin, Reporter; T. Coleman, President; J. Steele, Parliamentarian; B. Everhart, V-President; J. Matthews, Treasurer; F. Einhellig, Secretary.

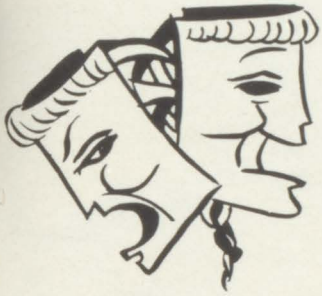


T H E S P I A N S



FIRST ROW: H. Sedgwick, C. Wiggins, C. Wilcox-President, D. Savage, B. Baum. SECOND ROW: R. Goble, D. Bushnell, B. Washburn, B. Hicks, P. Blecher. THIRD ROW: Mr. Hawkins, L. North, D. Williams, R. Kennett.

Because of the interest aroused by some students toward a dramatics organization to further this important phase of our high school activities, Mr. Robert Hawkins, speech instructor, arranged for Thespian Troupe to be organized at Bonner. April 25, Troupe 1353 of the National Thespian Society was installed by the members of the Leavenworth Troupe, at a candlelight ceremony.



Two three-act plays, a Christmas play, and a play for the exchange assemblies were put on by the school during the past year. We are very proud of our Thespian group and we hope it will help to create more interest in dramatics in the coming years.

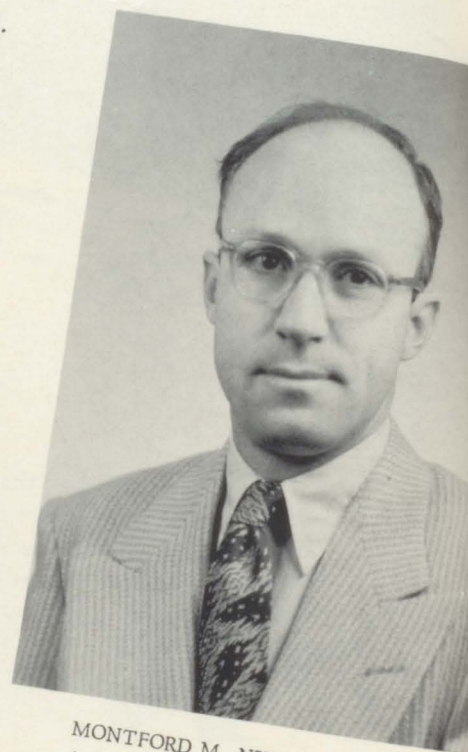


B I B L E C L U B



FRONT ROW, LEFT TO RIGHT: L. Sawyers, A. Wilson, J. Hewitt, P. Akers, J. Smith-President, M. Hewitt-Vice President, P. Dale-Secretary-Treasurer, R. Horn, P. Klamm, SECOND ROW: S. Knight, V. Stewart, R. Farris, M. Ballentine, W. Dunham, M. Theno, Marna Wilkins, S. Troutner, Myrna Wilkins, E. Malone. THIRD ROW: G. Smith, D. McNichols, S. Burnam, N. Howard, V. Gilliam, C. Reynolds, J. Ballentine, C. Roark, D. Bushnell, V. Kueker. FOURTH ROW: B. Thomas, L. McDonald, A. Bolton, J. Fenton, S. Reynolds, B. Budy, W. Dunkin, L. Ruby, A. Wendt, E. Rees, D. Stanley. FIFTH ROW: R. Carl, D. Langford, E. Zerbest, L. Crosby, E. Bowers, W. Langford, J. Mullins, J. Leake, D. Brunson. SIXTH ROW: T. Davis, F. Mitchell, D. Pardew, M. Einhellig, E. Davis, R. Dickson-City Council Representative, E. Arnold.

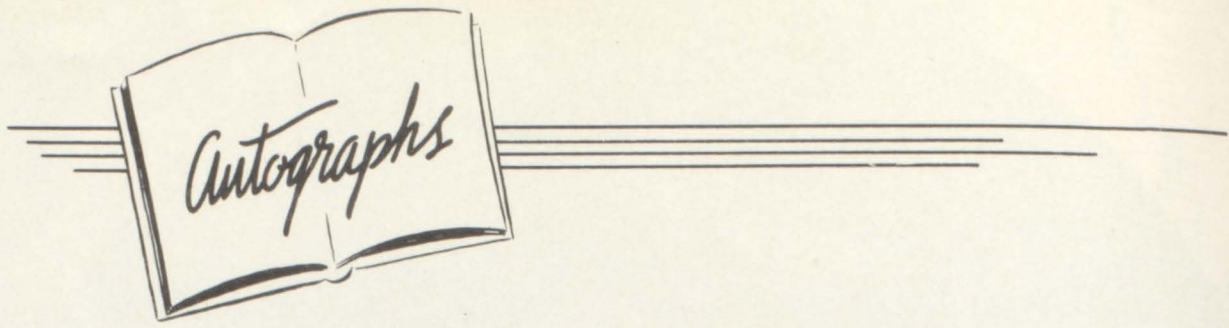
Art Exhibit



MONTFORD M. NYE
A. B., Arizona State College, Tempe,
Arizona.



Activities



Autographs

PLANS ARE ALL COMPLETE FOR SENIOR TRIP TO DEEP SOUTH



Kansas City Southern Lines



HOTEL BILOXI, BILOXI, MISS.
"The Coast's Most Beautiful Hotel"

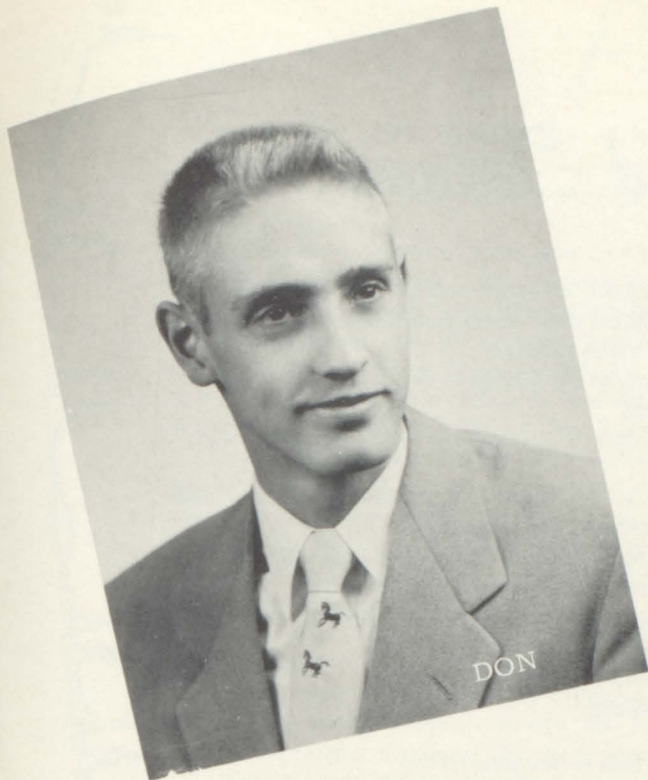


ANTOINE'S





*Homecoming Queen
and
Attendants*



This year's Mardi Gras was even bigger and better than any of the other carnival type evenings we had experienced in the past. The night of January 23 was set aside for this festive occasion.

The confetti and balloons lent a feeling of hilarity to the gala event. During the evening the merry-makers received the thrill of their lives by going through the Fun House and were put into a festive spirit by wearing gaily decorated hats purchased at "The French Chapeaux." Along the boardwalk those of highly unquestionable skill patronized the weight-lifting, dart-throwing, and basketball tossing stands. Others tried the Miniature Golf and Fish Pond while the girls consulted the Palmist as to the man of their futures.

The center attraction was the Casino where bingo fans thrived. During the course of the evening each visited the Pink Poodle refreshment stand.

The evening was highlighted by the presentation of the King and Queen of the Mardi Gras, Don McCully and Anne Klamet, who were given small gifts.

*King and Queen
of the
Mardi Gras*

Last Will and Testament

We, the Senior Class of Bonner Springs Rural High School, do ordain and establish in this the year of our Lord, 1954, our last will and testament. We leave our most prized possessions as follows: ---

- "Speedy" Baker leaves his superb typing ability to Charles Dunivan.
"Dimples" Barry wills her tendency to blush frequently to Pat Blecher.
"Veep" Baugh leaves his gas pump to John Pembleton.
"B. J." Baum and "Bertie" Goble gladly leave their seats in Physics class to any Junior girl who ever gets stuck with them.
"Curly" Burton leaves his repertoire of jokes to Melvin Walker, assured that he will do them credit.
"Dottie Jo" Bushnell leaves her thoughtfulness of others to Coranne Knipp.
"Bebop" Cline leaves--taking his possessions with him to seek his fortune (the bigger the better).
"Don Juan" Coleman leaves his tactics of parliamentary procedure to Frank Einhellig.
"Silent?" Dunn leaves his lead in the Senior play to any Junior actor who is interested in it.
"Rosie" Einhellig leaves her tactics on the use of the man-trap to Shirley Porth.
"Diz Dean" Eisman leaves his abundance of curly blonde hair to Claude Miller.
"Tina" Evers leaves her idealistic tango to Betty Jackson.
"Reckless" Handley leaves--at last!
"Man-Hater" (C) Hanson delights in willing her red hair to Margaret Hewitt.
"Rusty" (M) Hanson leaves her mechanical genius, such as it is, to Barbara Watson.
"Dare-Devil" Heeter leaves his overwhelming personality to Raymond Kennett.
"Bev" Hicks leaves her determination to Gail Moffit.
To Chuck Gibson, "Hen-Peked" Kelsay leaves his skill as a "one-arm" driver.
"Smiley" Klamet leaves her giggle to Sandra Issett.
"Clyde" (D) Knight leaves to arouse K. U. to greater basketball fame.
"Pres" (G) Knight leaves the care of his crazy mixed-up coke machine to Bob Laing.
"Shotgun" Lynn leaves Carolyn Hill to get to her classes alone.
"Duck" McCully leaves his agreeable manner to Larry North.
"Cookie" Martin leaves her neatly balanced chemical equations to Frances Kitchen.
"GI" Mann leaves his irresistible way with the women to Harry Grider.
"Johnnie" Matthews leaves his skill in drafting to Dick Deonier.
"Vet" Miller leaves chemistry--in the nick of time!
"Bon-Bon" Peoples leaves her outstanding attendance record to posterity.
To the 2 Wilkins twins, "Dee" Savage leaves her 1 cheerleading sweater.
"Y-vonne" (J) Smith wills her alto voice to--Eddie Forbach!
"Boss" (N) Smith leaves her blood-curdling giggle to Eddie Davis.
"Walt" Souders wills his mass of black curls to John Mikesich.
"Sue" Stark leaves her dog to be walked by Charles Mobley.
"Jackie" Steele leaves his size twelve and a half D boots to James McCleary.
"Goose" Tate leaves his nonchalant attitude to Clyde Umbenhower.
"Neeta" Troutner wills her small waistline to Helen Sedgwick.
"Ardie" White wills her diminutive stature to Pat Hoffine.
"Caridee" Wilcox leaves her cheerful attributes to Carolyn Wiggins.
"Slim" (D) Williams leaves his Pow Wow copy to some Junior hand-writing expert.
"Splinter" (W) Williams wills his polished manners to Charles McCord.
"Hot-Rod" Wagner wills his conversational ability to Ronald Brown.

Prophecy

"Station SPACE. The time is 9:00 P. M. interplanetary."

"Good evening, friends! This is your reporter, Robert Cline, bringing you the news and views from Mars on this, our first interplanetary broadcast. On such a historic event, there's bound to be good news tonight, friends."

"But before we get on with the news let's pause a moment for a word from our sponsor."

"Good evening, friends! This is Beverly Baum speaking for Burton's Bouncing Pencils. How are you fixed for pencils, friends? Do you have trouble keeping pencils from breaking? Then you should try the new Burton Bouncer, the only all rubber pencil with its own sharpener on one end. This useful item was created by that promising young inventor, Mr. Keith Dunn, and is manufactured only by the Harry Burton Bouncing Pencil Co. Just remember our slogan the next time you buy: A Burton Bouncer to prevent breakage. Now back to Robert Cline and the news."

"Flash! From Earth comes the bulletin that Dr. Delbert Mann, universally known nuclear physicist, was awarded a medal of achievement for his work in developing a salt bomb from ocean water. The award was presented by Sally Peoples, Commander-in-Chief of the WAC."

"The first flight from Earth to the Moon by way of Mars was completed today. As pilots Bud Lynn and Robert Handley taxied their flying saucer into the Lunar Airstrip they were met by the moon's leading citizen, President Rosa Lee Einhellig."

"In the world of sports many exciting events took place today. Senor John Heeter, universally famous bullfighter, strangled his 110th bull this afternoon before a crowd of 12,000 people, which included such notables as Miss Beverly Hicks, champion bubble gum blower, Miss Dorothy Bushness, inter-planetary known mountain climber, Mr. Jack Baugh, multi-millionaire investor, and Mr. Gerald Knight, the famous contractor who last year straightened the Leaning Tower of Pisa."

"From the Rock of Gibraltar today came the news that the renowned swimmer, Mr. Terry Coleman, is planning once again to swim the Mediterranean Sea. On this, his tenth try, he will be ably assisted by Coach Dale Williams."

"The scheduled fight of those well-known wrestlers, Jack Steele and Dean Wagner, will be held tonight in New York City. Tickets are in such demand that Mr. Wiley Williams, owner of the Madison Square Garden Arena has asked for protection from the joint chiefs of the FBI, Darrell Knight and Virgil Kelsay."

"In the world of business and enterprise, Mr. John Matthews, wealthy manufacturer, has turned his toothpaste factory over to Mr. Ronnie Tate, former toothpaste stacker, and his able assistant, Miss Nita Lee Troutner. Mr. Matthews will soon open a new factory for the purpose of making watercress and mistletoe. He will take many of his former employees with him to the new building, including his favorite truck driver, Walter Souders, his personal assistant, Carolyn Hanson, and his lawyer and secretary, Don McCully and Ann Klamet."

"Now for bits of news picked up through the atmosphere. The actress of the year, Miss Gaynelle Martin, was seen going into the very exclusive dress shop, Sags Third Avenue, recently opened by the top designers in the fashion world, Misses Delores Savage, Betty Evers, and Nancy Smith. . . . Mr. Ronald Baker, diplomat to the new planet, Pluto, gave a welcoming party for the noted author, Miss Carolyn Wilcox, who is visiting the planet to gather information for her forthcoming novel. . . . At the manufacturers' convention being held on Saturn is the inventor, Dean Eisman, who recently perfected his automatic shoelacer for commercial use, and his assistant who ties the knots, Miss Arduis White. . . . At the annual dog show held in New York City, Earth, Miss Martha Stark received thirty blue ribbons for her pedigreed cocker spaniels. . . . The current talk of the universe in the entertainment field is the dance team of Howard Miller and Marilyn Hanson. . . . In the auto race featuring former cab drivers, Miss Roberta Goble and Miss Pat Barry, which is to be held next month, the first engineless cars will be used. . . . Miss Jessie Smith, young dentist, has recently perfected a painless extraction method in which her new secret formula is applied to the tooth which immediately drops out. . ."

"Well, friends, that is all the news for tonight. This is your reporter, Robert Cline, saying good-bye for now on behalf of Burton's Bouncing Pencils, the universe's favorite pencil."

*National
Honor
Society*



Beverly Hicks



Rosa Lee Einhellig

Ronnie Baker



Carolyn Wilcox



Beverly Baum

Valedictorians and Salutatorian



Marilyn and Carolyn



Rosa Lee

COMMENCEMENT PROGRAM

Overture, "Pacific Grandeur"	Olivadoti High School Band
Processional	High School Band
Invocation	Rev. Paul Walker
Selections	Girls' Glee Club
"By the Bend of the River"	Edwards
"My Own America"	Wrubel
	Accompanist—Sheila Troutner
Salutatory Address	Rosa Lee Einhellig
Piano, Prelude, Op 23 No. 5	Rachmaninoff Beverly Hicks
Valedictory Address	Marilyn Hanson Carolyn Hanson
Address	Prof. E. C. Buhler University of Kansas
Presentation of Class	J. J. Whitehead
Presentation of Diplomas	Donald R. McCully
Class Creed	Class
Benediction	Rev. Earl Perry



Advertising

Compliments

of

INTERCOLLEGIATE PRESS

H. F. Peterson

Compliments of

MR. AND MRS. HARLAN H. TURNER

TRUCKERS AND TRANSIT RESTAURANT

Junction 24-40-73



301 Oak

Phone 481

BILL'S SANDWICH SHOP

Sandwiches Our Specialty



KANCEL'S SUPER MARKET

A Thrift-Way Store

101 South Nettleton

Phone 32

Compliments
of

APOLLO CLEANERS

112 Oak Street Call 181

KANSAS POWER AND LIGHT COMPANY

121 Oak Call 113

Sam Gillum, Manager



FEDERATED STORE

Bonner Springs

Phone 7

BONNER SPRINGS CHIEFTAIN

Established in 1897 \$2.00 yearly

Printing
Cards
Envelopes
Sale Bills

"Take the paper that gives the news
of your local community."

M. W. Vaughn Mrs. M. W. Vaughn

BONNER SPRINGS PAINT & WALLPAPER

Arthur Hanson, Manager

119 Oak

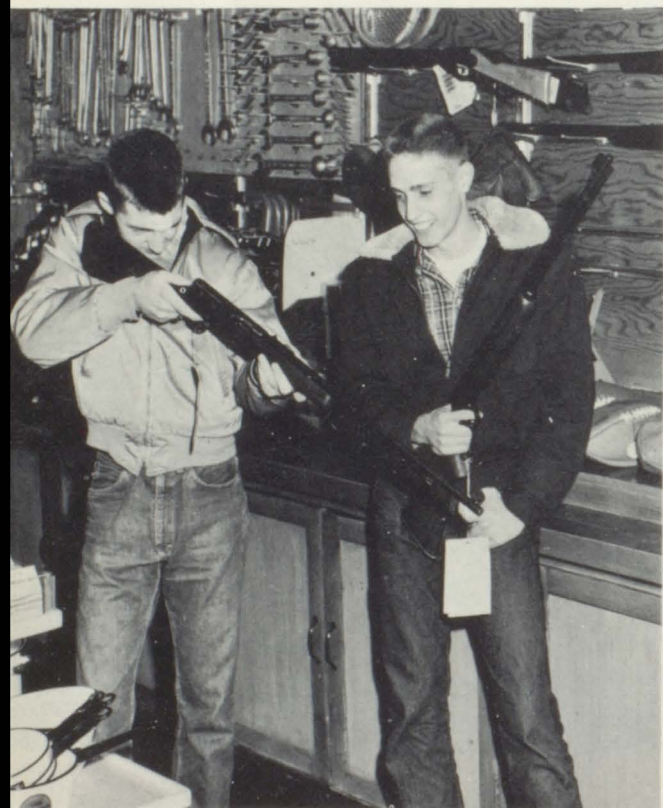
Phone 465



IRIS MARKET

302 Oak

Phone 82



THE OWL HARDWARE COMPANY

226 Oak

Phone 28

Compliments

of

ALLEN'S SERVICE STATION

101 Oak

Phone 324

Congratulations

to the

Class '54

LONE STAR CEMENT CORPORATION



HEETER'S MARKET

136 Oak

Call 139

ED LONG MOTORS

New

and

Used

Tires

and

Trucks

228 Oak

Phone 133 or 24

ROUDYBUSH SERVICE STATION

L. M. Roudybush

Tires

Mobilgas

Mobiloil

Batteries

Road
Service

Phone
525

Edwardsville



CHRISTIANSEN'S JEWELRY

"It pays from the start to
trade with Art"

HULBURD INSURANCE

113 South Nettleton Bonner Springs

P. O. Box 114 Phone 152

SCOTTY GOBLE'S GARAGE

113 East Third

Established in 1889 209-19 Oak

LUMBER COMPANY

Bonner Springs, Kansas

AL HAUETTER'S MODERN CRAFTSMEN

107 East Second Phone 232

"If it runs by electricity,
we have it."



WHITE'S DEPARTMENT STORE

TO THE YOUNG MEN AND WOMEN
OF THE CLASS OF '54

For this achievement-
OUR HEARTIEST CONGRATULATIONS!

For your future success-
OUR SINCERE GOOD WISHES!

Bonner Springs is proud-
OF YOU!

A BETTER BANK for a
BETTER BONNER SPRINGS

COMMERCIAL STATE BANK

Bonner Springs, Kansas

Member Federal Deposit
Insurance Corporation

Shop

and

Save

at

HILLIARD'S H.G.F. MARKET

Edwardsville Phone 718-J-1

RUBY LAUNDRY

SELF SERVICE DRY CLEANING

107 Oak

Phone 234



WATSON'S DRUG STORE

135 Oak

Phone 105

G. A. PERKINS HARDWARE

Tools

Paints

Hardware

Garden Seed .

Electrical Appliances

Call 199

WESTERN AUTO ASSOCIATE STORE

W. M. Griffin, Manager

202 Oak

Phone 546

EDWARDSVILLE VARIETY

Dewey and Edna Schlup

Phone 520

McHENRY'S GROCERY

511 N. Nettleton Phone 231

SAUL'S

SERVICE

STATION

EDWARDSVILLE

Business
Phone 496

Residence
726-w-3

Quick Change-Greasing-Road Service

Compliments

of

NATURAL STORAGE COMPANY

Loring, Kansas

Phone 330

JONES I.G.A. SUPER MARKET

We're with you 100%

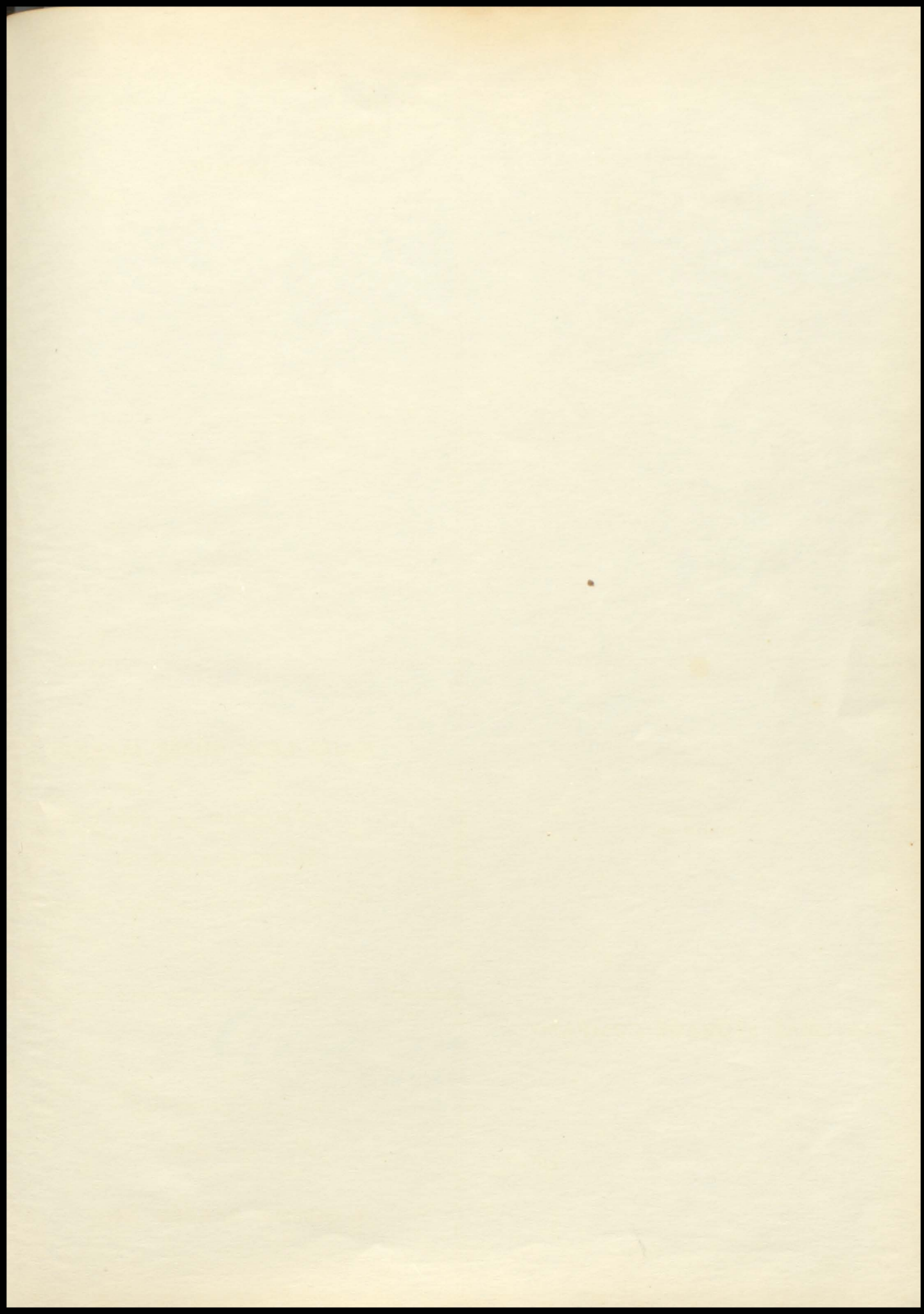
Quality plus Quantity

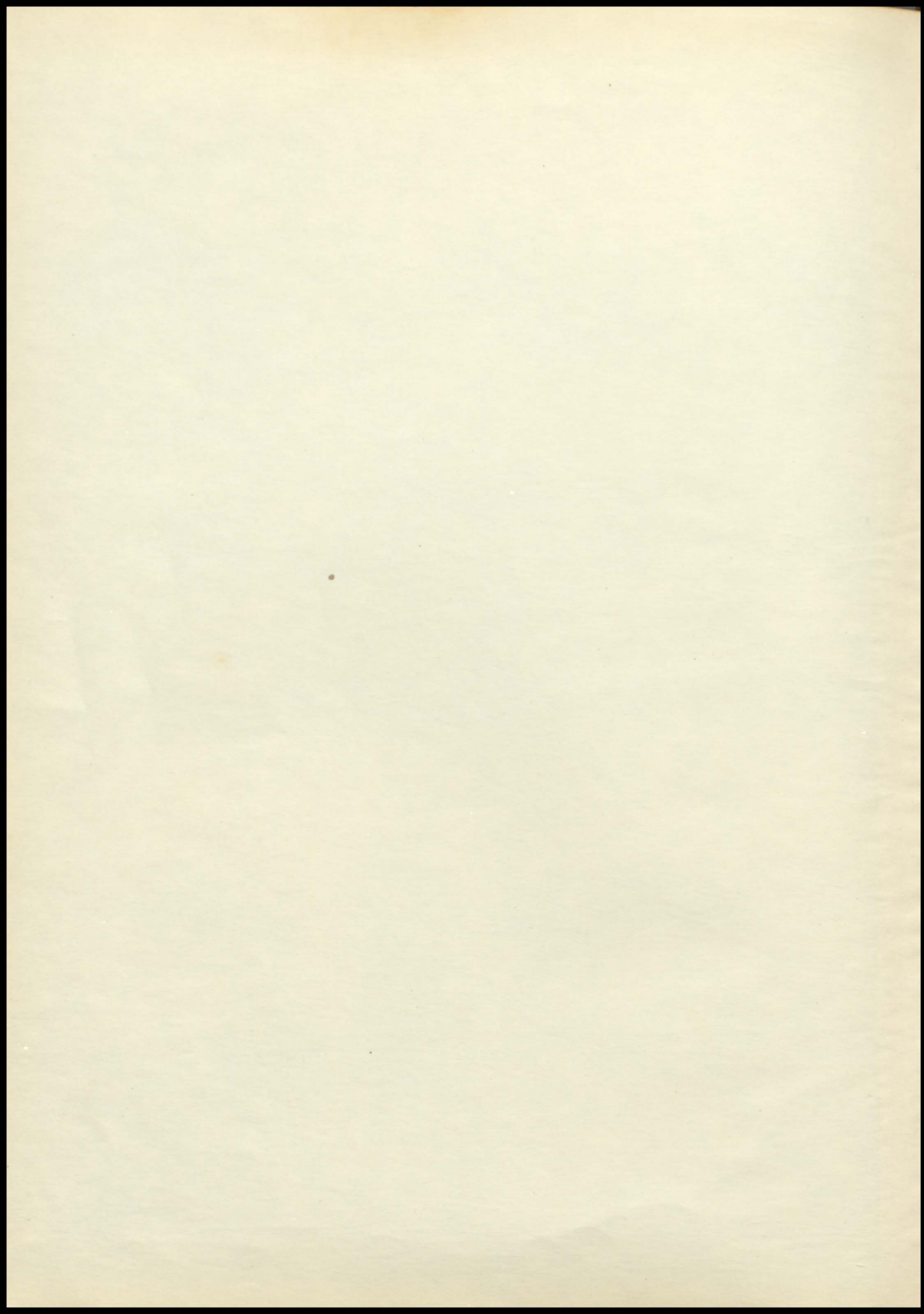
203 Oak Bonner Springs, Kansas

Congratulations to the

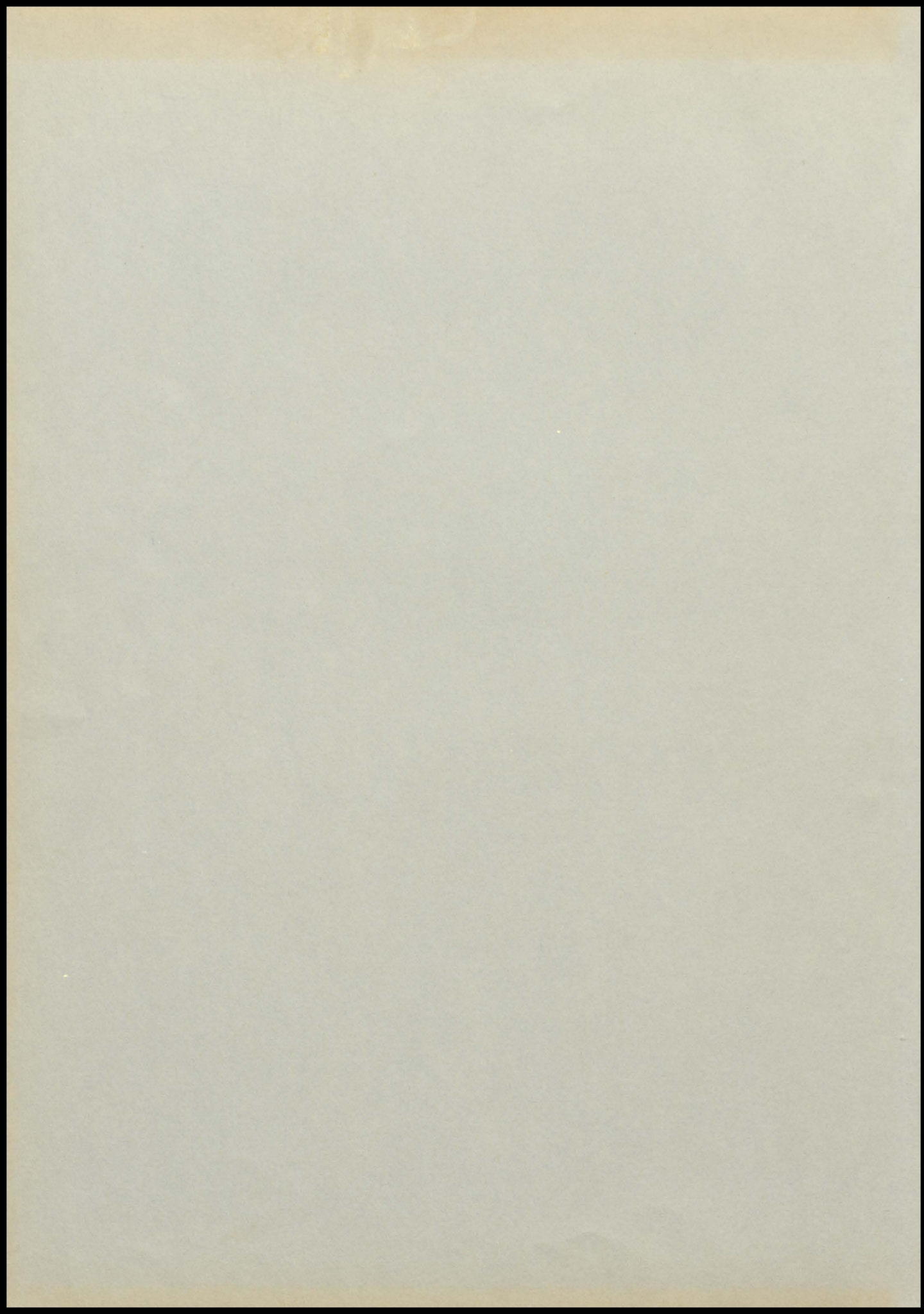
Class of '54

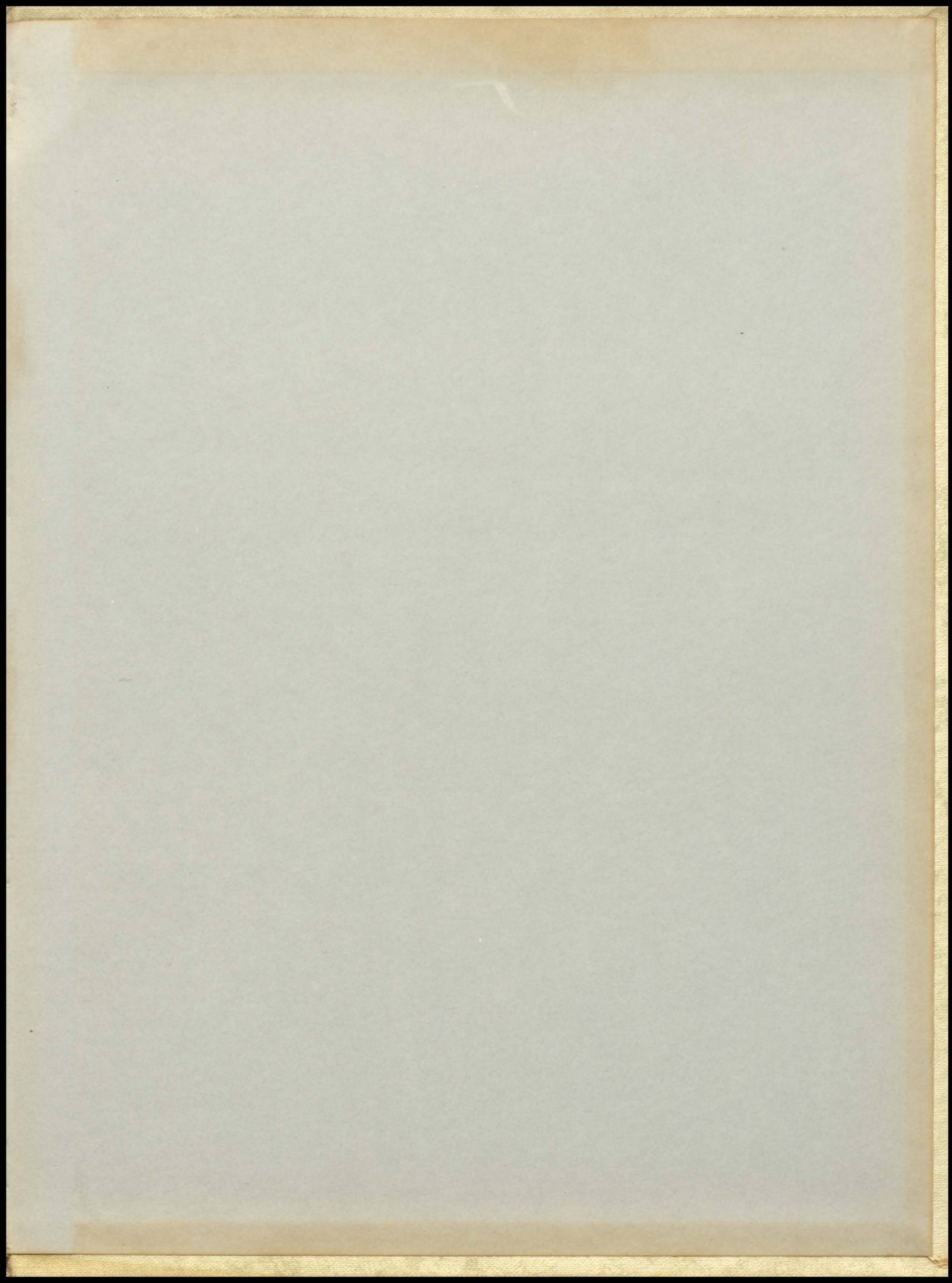
GIBSON BARBER SHOP





Myers
PACEMAKERS
OF QUALITY
YEARBOOKS
in deep tone





Myers
CUSTOM
COVERS